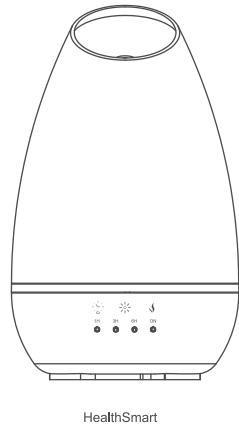


Aroma Diffuser User Manual

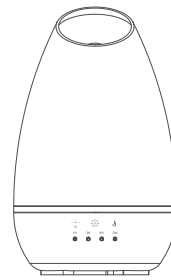
Please read this manual carefully before using



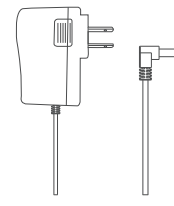
HealthSmart

ACCESSORIES

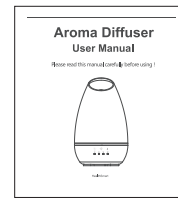
- 1 x 500ml Aroma Diffuser
- 1 x AC Adapter
- 1 x User Manual



Aroma Diffuser



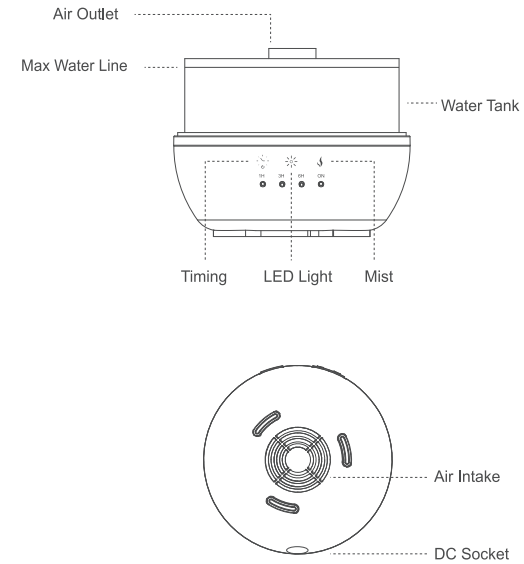
AC Adapter



User Manual

1

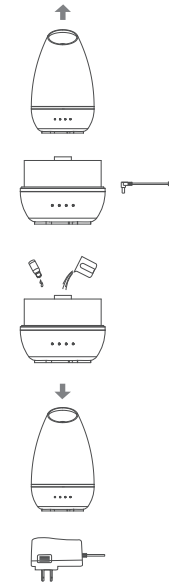
PRODUCT INTRODUCTION



2

OPERATION

- Carefully remove the lid from the main unit.
- Take the AC adapter out of the tank, then connect the power cord to the unit.
- Pour approx 500ml water (tap water is OK), into the water tank (do not exceed the max line on the water tank) and add 3-5 drops of essential oil.
- Place the lid back, position the nozzle to adjust the the direction of the mist.
- Plug the AC adapter into household power socket.



3

- Quickly press the "TIMING" button one time to turn on the mist. Hit the "TIMING" button again to set the timer for 1H/3H/6H/ON(as shown by the LED indicator). Or press the "TIMING" button for 2 seconds to turn it off.
- Pressing the "MIST" button to toggle between low/high and off. when you turn on the diffuser, the mist is in the low mist mode by default.
- Quickly press the "LED LIGHT" button one time to turn the light on auto-changing mode. Hit the "LED LIGHT" button again to change and choose your favorite color. Or press the "LED LIGHT" button for 2 seconds to turn the light off.



ATTENTION

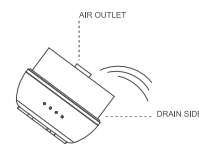
- The lid should be covered on the main unit while working.
- The intensity of the mist may vary while working. this is normal and is not cause for concern.
- If the diffuser is not in use, drain the water of the tank and store it in a dry place.
- If turning on the unit without water in the tank, it will auto shut off to protect the unit, The unit does not work if there is no water in the tank.
- Please use 100% pure essential oil to prevent the unit from damage.

4

MAINTENANCE

It is suggested to clean the diffuser every 2-3 days, or when changing to another flavor of essential oil, please clean the unit as following:

- Remove the power line and the lid from the main unit.
- Drain water from the tank as shown.
- Wipe the tank with wet wipes or soft cloth(you may need to clean the ultrasonic vibration tile with cotton swabs) .



SPECIFICATION

Model Number :	40-500-190
Item Description :	Essential oil Aroma Diffuser
Dimensions:	Approx 5.51" x 9.37" (14cm x 23.8cm)
Weight (excluding adapter):	Approx 1.5 lbs. (680g)
Power Supply (input/output):	AC100-240V 50.60HZ / DC 24V 650MA
Length of cord:	Approx 5.9' (1.8m)
Rate Power:	Approx 15.6W
Time mode:	1H/3H/6H/ON
Tank capacity:	500ML
LED light:	5bulbs
Materials :	ABS+PP
Accessories:	AC adapter and User Manual
Method of mist production:	ultrasonic vibration at approx 2.4MHZ

5

TROUBLE SHOOTING

Problem 1: Can't turn on.

Cause : Have you connected the AC adapter properly?
Solution: Check the AC adapter.

Problem 2: Once the unit is on, it shuts off automatically

Cause : Not enough water in the tank? Pressing the MIST button for too long?
Solution: Add water to the tank. Short/quick press the MIST button.

Problem 3: There is no mist or very little mist out of the unit.

Cause : No enough or too much water in the tank?
Dirt on the ultrasonic plate?
Dirt on the air inlet port on the underside of the base?
Solution: Use a piece of soft cloth to gently wipe the ultrasonic vibration plate and the air inlet port. Add water to the tank.

Problem 4: Water leakage from the unit.

Cause : The cover and inner cover are not installed properly?
Did you add too much water in the tank?
Did you tip over the unit?

Solution : Drain out the water and dry it. Correctly install the cover and inner cover. Add water to the tank no more than 500ml. If you tip over the unit, pour out all the water, shake the unit gently to drain out the water inside the machine, then leave it for a dry condition for at least 24 hours.



6

FCC STATEMENT AND EMC COMPATIBILITY

This equipment has been tested and found to comply with the limits for a Class B digital device, pursuant to part 15 of the FCC Rules. These limits are designed to provide reasonable protection against harmful interference in a residential. This is equipment generates, uses, and can radiate radio frequency.

WARRANTY

One-year warranty is available from purchasing date, excluding user-caused.

Failures listed below:

- (1)Failure resulted in unauthorized disassembly and modification.
- (2)Failure resulted in unexpected drop during application or transportation.
- (3)Failure resulted in operation away from proper instruction in user & manual.

Manufactured for:

HealthSmart® International
1931 Norman Drive
Waukegan,IL 60085

#91-032-500a 03/18
©2018 HealthSmart® International