



healthsmart®

WELLNESS & HEALTHY LIVING SOLUTIONS



hs
+
2026

OUR MISSION

Wellness & Healthy Living Solutions

Welcome to HealthSmart®, where we are committed to empowering healthier, more active lifestyles through innovative and accessible wellness solutions. For over 65 years, HealthSmart® has been a trusted name in health and wellness, offering high-quality, affordable products through our recognized brands.



Our products are thoughtfully designed to support healthy living at home and beyond, helping people stay active and independent whether they're at home, on-the-go, at work, or at play. We offer a comprehensive range of solutions, from Bath Safety and Breathing Wellness to Mobility, Vital Signs Monitoring, Rehab Therapy, and Daily Living Essentials.

At HealthSmart®, we are dedicated to staying at the forefront of product development, creating innovative, intuitive, and attractive products that help individuals monitor, manage, and maintain a healthy body and life. Whether for the young or the young-at-heart, our products deliver the support people need to thrive in their daily lives.

HealthSmart® International

Outstanding Products

We carry the most trusted and innovative brands in the medical supply & equipment industry. Our brands offer endless options of medical-grade products, that are superior in quality and affordable.



DMI®

Recognized leaders in the durable medical equipment industry, representing a broad range of reliable, durable and affordable home medical solutions.

healthsmart®

HealthSmart®

Premium healthcare products for children, adults, and seniors that provide a healthy, safer lifestyle.



MABIS®

The most comprehensive line of digital thermometers and stethoscopes in the industry are found under our legacy brand, MABIS®.



Brazos Walking Sticks

This line of hand-crafted high-quality walking sticks and canes has infused the feel of nature into beautiful, functional walking aids.

switch sticks.®
A HEALTHSMART® BRAND

Switch Sticks®

Designer walking aids with contemporary designs that are sure to eliminate any stigmas associated with walking sticks.



Heelbo®

Specializing in heel and ankle support products that are breathable, comfortable and provide a snug fit for excellent support.



Stein's®

A line of foot care products that are made from the highest quality materials and designed to complement the body's natural healing process.



Nourish Beauté

Plant-based hair growth products, body scrubs, lotions that are free of harsh, harmful chemicals.



Habitat®

Making your home healthier through innovation and superior product quality - we are Habitat®

Table of Contents

Bath Safety	5 Transfer Benches 6 Bath Seats 9 Toilet Risers 10 Commodes 12 Toilet Rails 13 Grab Bars 14 Bath Accessories 17 Urinals & Bed Pans
Bed Safety	18 Mattress Protection & Incontinence 21 Mattress Pads & Bed Boards 22 Bed Accessories 23 Blankets
Digital Thermometry	24 Infrared Thermometers 25 Digital Thermometers
Respiratory	28 Steam Inhalers 29 Humidifiers & Aspirators 30 Diffusers 31 Air Purifiers 33 Pulse Oximeters
Digital Blood Pressure	34 Arm Monitors 35 Wrist Monitors
Hot/Cold Therapy	36 Heating Pads 37 Hot/Cold Compress and Ice Packs
Fitness & Physical Therapy	38 Exercise Therapy 40 Wrist & Hand Therapy 41 Cervical Devices 42 Back Support & Muscle Therapy 45 Rehab Therapy
Pressure Management	46 Seat Cushions 51 Lumbar Support Cushions 53 Bed Wedges 54 Pillows & Cushions 57 Arm & Leg Support 59 Compression Sleeves 60 Compression Socks
Mobility	62 Walkers 63 Rollators 65 Walker Accessories 67 Canes 71 Cane Accessories 73 Wheelchair 74 Transfer Aids
Stethoscopes	75 Stethoscopes
Sphygmomanometers	77 Sphygmomanometers
Infection Control	83 Gowns 84 Bibs, Masks & Gloves 85 Wipes
Medical Supplies	86 First Aid Kits & Instruments 87 Otoscopes 88 Medical Supplies 90 Limb Restraints
Daily Living Aids	92 Reacher Grabbers 93 Home Aids 98 Pill Organizers, Cutters & Crushers 99 Dressing Aids
Pet Care	101 Pet Care
Nourish Beauté®	102 Shampoo & Conditioner 103 100% Natural, Mens, Dry Shampoo 104 Serums, Hair Masks & Body Scrubs
Brazos Walking Sticks®	105 Walking Canes 108 Walking Sticks 112 Accessories 114 Cutting Boards
Brazos Outdoors™	115 Brazos Outdoors
Foot Care - Steins®	116 Insoles & Heel Cushions 117 Foot & Toe Pads 120 Toe Spacers & Protectors 121 Toe Cushions & Straps

Bath Safety

Transfer Benches



NEW!

DMI® Rotating Sliding Transfer Bench w/ Scrub Brush

ITEM # 522-1736-1900

- ✦ Large 360° Rotating Seat – Smooth pivoting for easy movement.
- ✦ Glide & Slide Technology – Minimizes effort during transfers.
- ✦ Sturdy, Adjustable Frame – Fits most tubs and shower spaces with large suction cup feet.
- ✦ Integrated Safety Belt – Provides comfort and security.
- ✦ Extra Drainage Holes - Keeps water from pooling on seat.
- ✦ Padded Flip-Up Arm Rests – Easy in and out transfers
- ✦ Bonus Back Scrubber - Adjustable scrubber with soft & stiff bristles
- ✦ Tool-Free Assembly. Weight Capacity: 280 lbs. Adjustable Seat Height: 19.5"- 23.5"



DMI® Sliding Transfer Bench Shower Chair with Cut-Out Seat

ITEM # 522-1734-1900

- ✦ Seat slides side-to-side minimizing physical strain on user or caregiver.
- ✦ Blow-molded plastic seat and back with textured, non-slip surface.
- ✦ Durable, lightweight, aluminum frame.
- ✦ Cut-out easily removes for perineal access.
- ✦ Adjustable legs with suction cup, slip-resistant tips.
- ✦ Seat locks into place and provides additional safety.
- ✦ Seat height adjusts from 19"-23.5" in 1" increments.
- ✦ Seat Size: 19" x 14.5". Weight Capacity: 400 lbs.



DMI® Tool Free Transfer Bench

ITEM # 522-1740-1900

- ✦ The universal transfer bench is designed to assist the elderly, disabled, and individuals with limited movement with bathing and showering safely and securely.
- ✦ Adjustable interlocking legs allow for secure height adjustment. Height can be adjusted from 31" to 34.5".
- ✦ Safety handles and non-slip rubber feet provide safety and stability.
- ✦ Tool-free assembly. Weight Capacity: 350 lbs.
- ✦ Size: 26"L x 14"W x 31"-35.4"H

Bath Safety

Bath Seats



DMI® Rolling Shower Padded Transport Chair

- + Easily moves in and out of the shower and directly over a standard size toilet. 3 in 1 commode, shower chair and wheelchair is used directly over a toilet for safer toileting or as a safe and durable shower chair with perineal access.
- + Waterproof seat and back rest is safe and secure with rear (only) wheel locks and 4 inch tires to ensure stability while the arm rests offer additional security making it easier to sit and stand.
- + Overall Size: 24 x 22 x 34; Seat Height from floor: 21"; Seat Dimensions: 16" x 16"; Weight: 18 lbs.

ITEM #	WEIGHT CAPACITY	QTY
522-1702-1900	250 lbs.	1



HealthSmart® Bariatric Bath and Shower Seat

- + Bath seat is safe and secure with a frame constructed of strong lightweight anodized aluminum, and can accommodate up to 500 pounds with slip resistant tips for firm footing on wet surfaces.
- + Shower chair for inside shower has adjustable legs to set the seat height from 18-23 inches in 1-inch increments to accommodate most heights and spaces.
- + Drain holes eliminates water build up on the seat to reduce slipping.
- + Chair can be used with or without supportive back piece. Seat size measures 22 x 20 inches (*with back*) and 21 x 20 inches (*without back*).

ITEM #	WEIGHT CAPACITY	QTY
524-1816-1999 (<i>with back</i>)	500 lbs.	1
524-1814-1999 (<i>without back</i>)	350 lbs.	1



DMI® Heavy Duty Bath and Shower Chair

- + Shower with confidence knowing you have a sturdy, durable and convenient chair to sit on. Frame is made from aluminum which is incredibly strong yet lightweight to lift and carry.
- + Adjustable height from 16-20 inches in 1-inch increments to accommodate most heights and spaces. Seat has a textured, non-slip surface and drain holes to protect against water buildup.
- + Slip-resistant, suction cup rubber tips give the chair a firmer footing on wet surfaces.
- + It's easy to assemble with no tools required. Contains latex.

ITEM #	WEIGHT CAPACITY	QTY
522-1733-1900 (<i>with back</i>)	350 lbs.	1
522-1735-1900 (<i>without back</i>)	350 lbs.	1



DMI® U-Shape Bath and Shower Chair Bench

- + This sturdy shower chair will provide welcome relief if you have trouble standing long or worry about falling in the shower.
- + It has a comfortable molded plastic seat and removable backrest so you can even turn it into a shower bench or stool.
- + Its compact size makes it suitable for most bathrooms.
- + The u-shaped opening provides easier personal hygiene care.
- + Slip resistant rubber tips give the chair firm footing on wet surfaces.
- + Seat height adjusts from 13 to 17 inches in 1 inch increments.

ITEM #	WEIGHT CAPACITY	QTY
522-1712-1999	250 lbs.	1



DMI® Tool-Free Bath Seat – Shower Chair

- + Bath seat is safe and secure with a frame constructed of strong, lightweight anodized aluminum, with slip resistant tips for firm footing on wet surfaces.
- + Adjustable legs to set the seat height from 29.5-33.5 inches in 1-inch increments to accommodate most heights and spaces.
- + Drain holes prevent water build up on the seat to reduce slipping, with two integrated built in hand holds for standing and sitting assistance and a back hold for easy grasp to move.
- + Seat size measures 19.7 inches W x 10 Inches D; Chair can hold up to 300 pounds and product weighs only 8 pounds.

ITEM #	WEIGHT CAPACITY	QTY
522-0798-1900 (with back)	300 lbs.	1
522-0797-1900 (without back)	300 lbs.	1



DMI® Eurostyle Bath and Shower Chair

- + Safe and secure with a frame constructed of strong lightweight anodized aluminum and slip resistant tips for firm footing on wet surfaces.
- + Adjustable legs to set the seat height from 17-21 inches in 1-inch increments to accommodate most heights and spaces.
- + Drain holes eliminate water build up on the seat to reduce slipping, with integrated built in hand holds in the seat and back for easy moving.
- + Seat size measures 18 x 19 inches. Chair can hold up to 300 pounds. Product weight is 6.5 pounds.

ITEM #	WEIGHT CAPACITY	QTY
522-5046-0300	300 lbs.	1

Bath Safety

Bath Seats



HealthSmart® Wall Mount Fold Away Shower Bench

- ✦ Increase safety and convenience in your bath and shower area by installing this handy space-saving folding shower chair.
- ✦ The folding shower seat easily folds down when you need it and back up against the wall when you don't. Saves you space when it's not in use.
- ✦ The foldable shower chair is made of blow molded plastic with seat drain holes to prevent water buildup. The legs have rubber tips for added safety and are height adjustable from 17 ½ to 20 ½ in 1-inch increments.
- ✦ Seat size 16 x 16 inches. Requires installation with tools by a qualified technician to ensure safety.

ITEM #	WEIGHT CAPACITY	QTY
522-3700-1900	250 lbs.	1



HealthSmart® 360 Swivel Germ-Free Bath Seat

- ✦ Swivel shower stool has 360 degree rotation allowing easy entry and exit from showers and bathtubs.
- ✦ Storage shelf provides easy access to shower necessities below the stool.
- ✦ Shower seat features no tool assembly and a locking mechanism that allows for the seat to stay stationary for additional stability and support in the bath or shower.
- ✦ Seat diameter 16 inches and adjustable legs extend from 18 to 20 inches.

ITEM #	WEIGHT CAPACITY	QTY
522-9810-1900	400 lbs.	1



HealthSmart® Compact Lightweight Germ-Free Shower Stool

- ✦ Shower stool for inside shower provides comfort and safety in a bath chair that was designed to complement and blend into bathroom decor while providing a stable place to sit during a shower or bath.
- ✦ Shower chair is safe and secure with a frame constructed of strong lightweight anodized aluminum and slip resistant tips for firm footing on wet surfaces.
- ✦ Adjustable legs to set the seat height from 15.5-20 inches in 1-inch increments to accommodate most heights and spaces.
- ✦ Non skid seat prevents water build up and slipping.
- ✦ Diameter measures 12.5"

ITEM #	WEIGHT CAPACITY	QTY
522-9801-1900	225 lbs.	1

Bath Safety

Toilet Risers



HealthSmart® Portable Elevated Toilet Seat Riser

- ✦ Raised toilet seat adds 5 inches in height to any standard toilet bowl, making it easier to sit and stand due to injury, surgery, handicap, or disability.
- ✦ Universal size that fits most standard toilets and effectively relieves pressure points and general discomfort. It's completely portable with no assembly required.
- ✦ Includes 3 large slip resistance pads that adhere the riser to the toilet bowl for stability and durability.

ITEM #	WEIGHT CAPACITY	QTY
522-1508-1901	250 lbs.	1



DMI® Vinyl Foam Toilet Seat Cushion

- ✦ Toilet seat riser effectively relieves pressure points and general discomfort with comfortable padding for covering hard toilet seats. The seat cushion is resilient for long-lasting use.
- ✦ Cushioned toilet seat riser fits most standard size toilet and commode seat.
- ✦ Four hook and loop straps keep the cushion securely in place with a secure hold that will not shift as weight is placed on or off the seat cushion.
- ✦ Easily cleaned with a disinfectant wipe or similar solution and the foam insert may be spot cleaned as needed.

ITEM #	SIZE	QTY
520-1246-1900	2 inch foam	1
520-1247-1900	4 inch foam	1



DMI® Hi-Riser Locking Toilet Seat

- ✦ Raises toilet seat by 5" for easier access for the elderly or those recovering from injuries, illnesses or surgeries.
- ✦ Locks in place. Front locking bracket secures seat to most toilet bowls for excellent versatility.
- ✦ Padded, alluminum armrests provide comfort, support and stability as you sit and rise from the toilet seat. Use with or without arms for lateral transfers.
- ✦ Weight capacity: 350 pounds; seat height: 5"; width between arms: 18"; seat size: 17" x 16".

ITEM #	WEIGHT CAPACITY	QTY
522-1511-1900	350 lbs.	1

Bath Safety

Commodes



DMI® Bariatric Extra-Wide Bedside Commode

- + Use as a sturdy bedside commode or as a toilet riser or safety frame on your existing toilet.
- + Support arms drop below seat level for unobstructed lateral transfers.
- + Extra-wide platform seating maximizes stability.
- + 7 quart capacity pail slides out from underneath; comes with lid that rests on top.
- + Seat height adjusts from 19 to 23 inches in 1 inch increments; seat size 23 x 18.5 inches.

ITEM #	DESCRIPTION	WEIGHT CAPACITY	QTY
802-1203-0300	Assembled	500 lbs.	1
802-1204-0300	Unassembled	500 lbs.	1



DMI® Steel Drop-Arm Bedside Commode

- + This convenient portable commode will make it easier for anyone needing a toilet close to the bed or wherever you choose. It's easy to assemble with no tools.
- + The padded support arms drop below seat level using a pull-pin release mechanism to provide for smooth lateral transfers from the bed or wheelchair.
- + The seat height conveniently adjusts from 19 to 23 inches in 1 inch increments.
- + Comes with a plastic seat and an 8-quart capacity pail with lid and splash guard.
- + Slip-resistant rubber tips add to safety (contains latex).

ITEM #	WEIGHT CAPACITY	QTY
520-1213-1900	250 lbs.	1

DMI® Commode Pails with Lid

- + Holds up to 12 quarts of fluid. The translucent design makes it easy to view and decide when it has to be emptied.
- + Includes lid and handle for easy transport.
- + Can be used as a replacement for both standard and bariatric commodes.
- + Multi-use buckets can be used for household storage, as a wash basin or for outdoor work.



ITEM #	DESCRIPTION	QTY
520-1209-1900	7 qt Pail with Lid	12/case
520-1210-1900	12 qt Pail with Lid	6/case

Bath Safety

Commodes



DMI® Universal Replacement Splash Guard

ITEM # 520-1251-1900

- + Can be used with most free-standing commodes.
- + Convenient and easy to use.
- + 11.5" x 11.5" x 11.5"

DMI® Disposable Commode Liners



- + Our commode liners easily fit standard sized commode pails and are made from extra rugged material.
- + Easy-tie handles make cleanup and disposable clean and simple.
- + Dark blue color helps hide contents.
- + Perfect for caregivers and self-care.
- + Liners measure 21" x 16". Absorbent Pad measures: 9.4" x 5.1"

ITEM #	DESCRIPTION	QTY
519-1200-0100	Liners	100 pk
519-1200-0207	Liners	7 pk
519-1200-0249KIT	Liners	7pk/7 boxes
519-1200-0260	Liners with Pads	60 pk



DMI® Toilet Squatting Posture Stool

ITEM # 520-0100-0000

- + Helps put your body in the proper position to relax your puborectalis muscle. This straightens out the colon to allow the poop to slide out with ease.
- + Fun footprint designs make it fun for children to want to use the toilet stool. Teaching them proper squatting posture at a young age, preventing harmful pushing that can lead to hemorrhoids.
- + Works best with standard toilets with a seat height of 14-16 in. Total dimensions: 18.75"W x 12.38"D x 7.62"H. Never stand on the toilet stool and children should only use it under adult supervision.

Bath Safety

Toilet Rails



DMI® Toilet Safety Arm Support

- ✦ Great for those recovering from hip, leg or knee surgery or injuries.
- ✦ Made of strong aluminum, which is lightweight and supports up to 250 pounds. Front locking bracket safely secures seat to most toilet bowls.
- ✦ Easy assembly with no tools needed to attach your safety toilet rails to your toilet using the existing toilet seat hinge bolt.
- ✦ Convenient and comfortable arm rests provide support. Arm rest height is 8 inches from the toilet bowl and 31 inches from the floor. Width between the handles adjusts from 15 to 18 inches.

ITEM #	WEIGHT CAPACITY	QTY
802-1810-9601	250 lbs.	1



HealthSmart® Germ-Free Toilet Rails Safety Arms

- ✦ Toilet safety rails are reliable and attach to most toilet seats to give you support and stability. Easily lower to or rise from your toilet seat without worry.
- ✦ Toilet safety frame feature an adjustable arm height and width to create perfect fit around the toilet, creating a range of comfortable and secure positions. Sit comfortably and remain sturdy and safe.
- ✦ Handles adjust from 27 to 31 inches in arm height and from 20 to 24 inches in arm width around the toilet, creating a custom fit around your toilet.
- ✦ Adjustable toilet safety rails attach to toilet hinge bolts with no tools necessary for easy installation. Weight capacity: 250 lbs.

ITEM #	WEIGHT CAPACITY	QTY
521-9804-9600	300 lbs.	1
521-9804-9601	250 lbs.	1

Bath Safety

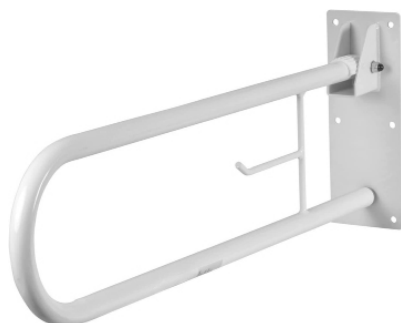
Grab Bars



DMI® Heavy-Duty Safety Tub Bath and Shower Grab Bar

ITEM # 521-1614-0600

- + Bathtub safety rail provides safety and stability while getting in and out of the shower or tub.
- + Grab bar features adjustable brackets that fit most tubs; Brackets adjust from 3 3/8 inches to 5 7/8 inches.
- + High-low design and textured chrome finish is rust resistant and provides extra stability and safety.
- + Product specs: Size 21 3/16 x 15 3/8 inches. Wash with soap and water.
- + This unit fits tub walls that measure from between 3.38" to 5.88" wide



DMI® Fold Away Grab Bar

ITEM # 522-3700-1700

- + Grab bars for bathroom are space saving and convenient. Designed to fold up against the wall and includes a built in toilet paper holder.
- + Features two gripping heights to aid in standing and sitting, providing extra safety in the bathroom.
- + Support for individuals getting in and out of the bathtub.
- + Provides added safety and stability locking into place when extended.
- + Made of 1" powder coated steel and come with stainless steel screws.



DMI® Textured Steel Grab Bars

- + Grab bar enables you to maintain balance, lessen fatigue while standing, holding some of your weight while maneuvering.
- + Handicapped grab bars offer a solid steel construction offering you a tight, comfortable grip and adds a nice modern look to your bathroom. The textured surface makes it easy to grab.
- + This grab bar is made of high quality chrome plated knurled steel that helps ward off rust.



HealthSmart® Antimicrobial Suction Cup Grab Bars

- + Grab bars offer quick and easy installation, no tools required, no holes needed, attaches to most non-porous surfaces with powerful suction.
- + Provide excellent temporary balance assistance in the shower or bathroom, not intended to support body weight.
- + Push levers down to attached to surface, push up to release; Color indicator changes from red to green to signify grab bar secure.

ITEM #	SIZE	BAR DIAMETER	WALL DISTANCE	QTY
521-1530-0624	24"	1 1/4"	1 1/2"	1
521-1530-0632	32"	1 1/4"	1 1/2"	1
521-1530-0612	12"	1 1/4"	1 1/2"	1
521-1530-0616	18"	1 1/4"	1 1/2"	1
521-1530-0618	16"	1 1/4"	1 1/2"	1
521-1570-0612HS	12"	1"	3 1/2"	1
521-1570-0616HS	16"	1"	3 1/2"	1
521-1570-0618	18"	1"	3 1/2"	1
521-1570-0624	24"	1"	3 1/2"	1
521-1570-0632	32"	1"	3 1/2"	1

ITEM #	SIZE	WALL DISTANCE	COLOR	QTY
521-1561-1916	16"	3 1/2"	Chrome	1
521-1561-1912	12"	3 1/2"	Chrome	1
521-1560-1924	19.5"	3 1/4"	Blue	1
521-1562-1916	16"	3 1/2"	Sand	1
521-1562-1901	4"		Sand	1

Bath Safety

Bath Accessories



DMI® Waterproof Foam Bath Seat Cushion

ITEM # 523-9816-0300

- + Shower seat cushion is waterproof, made of superior and durable foam material.
- + Seat cushion vents offer increased airflow and prevent water buildup to eliminate slipping and sliding in the shower.
- + Additional use as a kneeling pad or mat, perfect for gardening or bathing a child or dog in a bathtub.
- + Seat cushion is lightweight and portable. Size: 15.6 x 11.3 x 1.3 inches and weighs less than 1 pound. Product is latex free.



DMI® Inflatable Bed Shampoo Basin

- + Easy to wash, cut or color hair for someone who is elderly, disabled, bedridden, handicapped, on long term bed rest or with limited mobility.
- + Portable shampoo bowl is quick and easy to inflate and deflate and stores compactly when not in use to reuse over and over again.
- + Includes drain and 40 inch drain tube for easy clean-up after use.

ITEM #	DIMENSIONS	QTY
540-8085-0000	8"D x 24"W x 20"H	1



DMI® Hair Washing Bed Basin Tray

- + Portable shampoo basin makes it easy to wash a loved one or patient's hair who is on long term bed rest or who has limited mobility.
- + Includes hose and stopper to conveniently remove the water from the basin as well as seal water inside the basin while in use.
- + Telescopic drain hose expands from 12 to 31.5 in.

ITEM #	DIMENSIONS	QTY
540-8084-0000	5"D x 18"W x 14"H	1



HealthSmart® Bath Kneeler & Elbow Pad Rest

ITEM # 523-2000-0100

- + Thick foam padding provides essential support to your knees and elbows.
- + Convenient Organizer Pockets: Large mesh pockets to easily store bath items.
- + Premium, water-resistant material. The quick-dry fabric prevents moisture build-up, making it easy to maintain cleanliness and hygiene.
- + Equipped with strong suction cups, the elbow pad stays securely in place on the tub's edge. Simply press it onto the surface, and it's ready to use.
- + Non-slip safety base providing excellent grip on wet bathroom floors.

Bath Safety - Bath Accessories



HealthSmart® No-Skid Bath & Shower Mats

- + Extra large bathtub mat is made of durable top quality, anti slip material, with 200 well-placed suction cups and many drain holes to allow water to pass through.
- + Anti slip feature ideal shower mat for elderly, kids or babies.
- + Machine washable. Drain holes help allow water to drain and circulate to help keep the tub and shower clean.

ITEM #	DIMENSIONS	COLOR	QTY
523-1740-0100	40" x 16"	Blue	1
523-1740-0000	40" x 16"	Clear	1
523-1740-0030	40" x 16"	Gray	1
523-1740-0250	40" x 16"	Green	1
523-1740-0095	40" x 16"	Pink	1
523-1743-0100	18" x 18"	Blue	1



HealthSmart® Childrens Faucet Extender, 2pk

ITEM # 523-2000-0000

- + Flexible pivot design adapts to most standard faucets. Easy to install and remove.
- + Empowers Independence – Helps kids reach water effortlessly, encouraging self-care during hand washing and brushing.
- + Child-Safe Materials – Crafted from durable, high-quality rubber, it ensures safety and longevity, even with daily use.



DMI® CleanReach Pro™ Bathroom Toilet Wiping Aid

ITEM # 640-2507-0000

- + Ideal for personal care after surgery, during pregnancy, or for anyone needing assistance with personal hygiene.
- + Soft, flexible head to securely hold paper or wipes.
- + Easy-release button for mess-free disposal.
- + 15.5" handle for extended reach.



Maddak® Self-Wipe Bathroom Toilet Aid with Rotating Handle

ITEM # 641-2506-2000

- + Makes post-toilet cleaning possible for people with physical disabilities and mobility challenges.
- + Rotating handle. Smooth, round design provides comfort and allows accurate placement.
- + Features a release button to discard paper after use.
- + Dimensions: 14.75 inches

Bath Safety

Bath Accessories



HealthSmart® Hand-Held Body Shower Massager

ITEM # 523-1583-1900HS

- ✦ Help soothe muscles and joints for maximum shower relaxation
- ✦ 6 foot shower hose is perfect for those who need to sit when they shower. Great for caretakers and self bathing. Even great for pets!
- ✦ The detachable shower head comes with built-in on/off switch for easy operation.
- ✦ Fits standard 1/2 inch threaded shower pipes.



DMI® Waterproof Cast and Bandage Protectors

- ✦ This waterproof cast protector will keep your cast or bandage from getting wet in the shower and looks much better than a plastic bag.
- ✦ Secure fit. The convenient stretchable opening and latex strap ensure a comfortable tight seal to keep the protector from sliding and to prevent water from coming in.
- ✦ Made of thick, durable material that acts as a strong protective barrier for your cast or bandage.
- ✦ Conveniently reusable and easy-to-clean. Contains latex.

ADULT - ITEM #	STYLE	SIZE	QTY
539-6579-5500	Foot/Ankle	11 inches	1
539-6583-5500	Short Leg	23 inches	1
539-6584-5500	Long Leg	42 inches	1
PEDIATRIC - ITEM #			
539-6586-5500	Large Arm	22 inches	1
539-6587-5500	Medium Leg	18 inches	1



HEALTHSMART® 1 QUART FEMALE URINAL

ITEM # 540-5070-0000

- ✦ Made from high-quality polyethylene (PE) for long-lasting use and easy cleaning.
- ✦ Ergonomic shape reduces spills and leaks, ideal for use while sitting or lying down.
- ✦ Comfortable handle ensures steady, secure handling, even for limited mobility users.
- ✦ Perfect for travel, camping, elderly care, hospital, or bedside use—suitable for females of all ages.
- ✦ Holds up to 1 quart, reducing the frequency of emptying for convenience and independence.



Bath Safety

Urinals & Bed Pans



DMI® Deluxe Autoclavable Contoured Bedpan

ITEM # 541-5070-0000

- + Bed pan is designed for comfort and convenience with a smooth, contoured shape.
- + Size: 11" x 13.25"; Back height: 2.25"; Front height: 3.75"
- + Odor resistant and built to last with a heavy duty design that resists spills and splashes.
- + Easy to clean with standard cleaners at home or autoclavable, meaning it can be boiled or sterilized at heats up to 275°F.



DMI® Standard Bed Pan

ITEM # 541-5067-9720

- + Pontoon-style molded plastic bed pan
- + Cleans with standard household cleaners
- + Size: 14 3/8" x 11 5/8"; Back height: 2 5/8"; Front height: 4 1/4"



DMI® McGuire-Style Male Urinal

- + 1 size fits most
- + Soft latex sheath can unsnap for care
- + Unique 1-way valve prevents fluid return
- + Includes: elastic waistband, sheath and 20-oz. leg bag with adjustable latex straps
- + Entire item is washable

ITEM #	SIZE	QTY
541-7752-0000	Urinal Kit	1
541-7757-0001	Replacement Sheath	1
541-7758-0000	Replacement Bag	1



MABIS® Combination Douche, Enema, Hot Water Bottle System

ITEM # 42-842-000

- + Reusable easy to clean and use multipurpose Enema Kit, Douche and Hot Water Bottle.
- + Hot water bottle is great for aches, pains, chills, sprains, strains, reducing swelling and more.
- + Use as a douche as part of a hygienic routine to help eliminate infection and enhance natural.
- + Enema benefits include helping relieve constipation, backache, bloating, indigestion and hemorrhoids.

Bed Safety

Mattress Protection & Incontinence



DMI® Protective Mattress Cover for Beds

- + Protects and extends the life of the mattress.
- + Will not crack, peel or discolor.
- + Contoured-style slips over mattress; zippered-style fits around mattress
- + Hypoallergenic and waterproof
- + Machine washable

ITEM #	STYLE	SIZE	QTY
554-8059-1900	Contoured	Hospital	1
554-8068-1952	Contoured	Queen	1
554-8068-1953	Contoured	King	1
554-8064-1900	Zippered	Hospital	1
554-8069-1950	Zippered	Twin	1
554-8069-1954	Zippered	Twin XL	1
554-8069-1951	Zippered	Full	1
554-8069-1952	Zippered	Queen	1
554-8069-1953	Zippered	King	1



DMI® Flannel/Rubber Waterproof Sheeting

- + Protects bedding from moisture
- + Soft against skin
- + Cotton flannel bonds to non-allergenic synthetic rubber
- + Neutral white finish
- + Machine washable



ITEM #	STYLE	DIMENSIONS	QTY
560-8037-0022	Non-Reversible	36 x 54 inches	1
560-8037-0023	Non-Reversible	36 x 72 inches	1
560-8098-0023	Reversible	36 x 72 inches	1



DMI® Washable Underpads, 4pk

ITEM # 560-7065-0000

- + Leak-proof barrier that keeps liquid contained.
- + Large 34" x 36" bed pads are perfect for beds, wheelchair seats, chairs, couches, floor spaces and more.
- + Medical-grade strength and durability make these ideal for use in hospitals and senior care centers.

Bed Safety

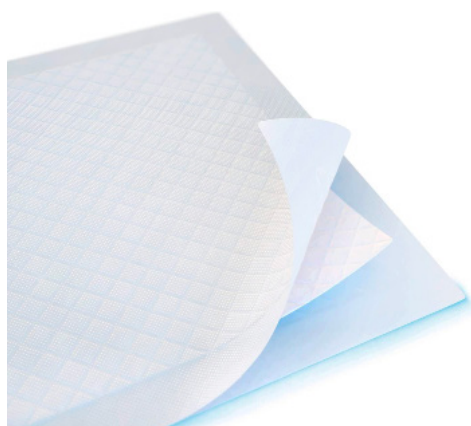
Mattress Protection & Incontinence



DMI® Waterproof Furniture and Bed Protector Pad

- ✦ Soft quilted waterproof reusable bed pads help protect bedding, furniture and wheelchairs from moisture.
- ✦ The brushed nylon top layer keeps moisture away from the skin.
- ✦ Multiple layers of absorbent material give extra protection against severe wetting.
- ✦ Machine washable.

ITEM #	DESCRIPTION	SIZE	QTY
560-7046-0000	4 Layers, With Straps	28 x 36 inches	1
560-7053-0000	3 Layers, Without Straps	30 x 36 inches	1
560-7053-3652	3 Layers, Without Straps	36 x 52 inches	1
560-7058-0000	4 Layers, Without Straps	28 x 36 inches	1
560-7064-0000	4 Layers, Without Straps	36 x 40 inches	1



DMI® Ultra Absorbent Incontinence Pads

- ✦ Disposable incontinence pads with triple-layer protection. The polymer-filled central layer captures and holds up to 3000ml of water (Urine)
- ✦ Medical-grade bed pads absorb liquids and odor quickly and lock it down tight to avoid skin irritation or patient wetness.
- ✦ The polypropylene backing ensures the chux pads hold a consistent grip on beds, furniture, and common surfaces while preventing leaks and scrunching.

ITEM #	DIMENSIONS	QTY
560-7097-1900	36 x 36 inches	50
560-7098-3036	30 x 36 inches	100
560-7098-2336	23 x 36 inches	150



DMI® Incontinent Pants

- ✦ Lightweight, noise-free fabric makes any user feel comfortable
- ✦ For men, women and children
- ✦ Use with pads, diapers, reusables and other absorbent materials
- ✦ Elastic waist and leg bands provide additional protection and comfort
- ✦ Machine washable

ITEM #	STYLE	SIZE	QTY
560-7000-1923	Snap On	X-Large (38"-44")	1
560-7001-1922	Pull On	Medium (30"-36")	1
560-7001-1923	Pull On	Large (38"-44")	1
560-7001-1924	Pull On	X-Large (46"-52")	1

Bed Safety

Mattress Protection & Incontinence



Embrace™ Adult Skin Care Underwear

- ✦ Designed with a premium dual core that features a dual-core, high-loft, non-woven acquisition layer for faster absorption. Comfortable waist panel for a close, discreet fit. Tear-away sides making removing a breeze.
- ✦ Breathable cloth-like cover for exceptional all-day comfort.

ITEM #	SIZE	WAIST SIZE	QTY
600-PUB2	Medium	32 - 44 inches	25/pk; 4pk/case
600-PUB3	Large	45 - 58 inches	25/pk; 4pk/case
600-PUB4	X-Large	58 - 68 inches	25/pk; 4pk/case



Attends™ Discreet Women's Pads & Liners

ITEM #	DESCRIPTION	QTY
ATT-ADLINER	Panty Liners	28/pk; 24pk/case
ATT-ADPMAX	Pads-Maximum	20/pk; 10pk/case



Attends™ Premier Briefs

ITEM #	SIZE	QTY
ATT-ALI-BR20	Medium (32-44)	14/pk; 4pk/case
ATT-ALI-BR30	Large (44-58)	12/pk; 4pk/case



Attends™ Care Disposable Underwear & Briefs

ITEM #	DESCRIPTION	SIZE	QTY
ATT-APV30	Underwear	Large (44-58)	18/pk; 4pk/case
ATT-APV40	Underwear	Extra Large (58-68)	14/pk; 4pk/case
ATT-BRHC20	Briefs	Medium (32-44)	24/pk; 4pk/case
ATT-BRHC30	Briefs	Large (44-58)	24/pk; 3pk/case
ATT-BRHC40	Briefs	Extra Large (58-63)	20/pk; 3pk/case



Attends™ Discreet Underpads

ITEM #	SIZE	QTY
ATT-UFS236RG	23"x 36"	15/pk; 10pk/case

Bed Safety

Mattress Pads & Bed Boards



DMI® Convoluted Bed Pads

- ✦ Provides great air circulation and weight distribution.
- ✦ Helps prevent pressure sores, pressure point stress, bed sores, and decubitus ulcers with egg crate design.

ITEM #	STYLE	DIMENSIONS	QTY
552-8002-0000	Twin Mattress	33 x 72 x 2 inches	1
552-8003-0000	Twin Mattress	33 x 72 x 3 inches	1
552-7940-0000	Twin Mattress	33 x 72 x 4 inches	1
552-7945-0000	Hospital XL Mattress	33 x 76 x 4 inches	1
552-7948-0050	Twin XL Mattress	36 x 78 x 2 inches	1
552-7948-0051	Full Size Mattress	50 x 72 x 2 inches	1
552-7948-0052	Queen Size Mattress	56 x 78 x 2 inches	1



DMI® Deluxe Natural Sheepskin Pad

ITEM # 559-8079-0000

- ✦ Helps prevent pressure sore and ulcers, allowing you to wake up feeling refreshed in the morning. It also provides enhanced airflow to maximize your comfort level.
- ✦ The natural sheepskin material comfortably cushions your body and helps you sleep more soundly through the night.
- ✦ Recommended by healthcare professionals as the preferred surface for pressure ulcer prevention.
- ✦ Ideal for the home, hospitals and nursing homes; great for all sleepers!
- ✦ Product Specs: made of 100% natural sheepskin, machine washable, measures 8 to 9 square feet.



DMI® Folding Bed Board Mattress Supports

- ✦ Helps add firmness to too-soft or sagging mattresses to better support your back.
- ✦ Slide the bed board between the mattress and box spring.
- ✦ Conveniently folds into four equal sections, making it easy to carry and store.
- ✦ Board is ¾ inch thick.

ITEM #	SIZE	DIMENSIONS	QTY
552-1950-0000	Twin	60 x 30 inches	1
552-1952-0000	Double	60 x 48 inches	1

Bed Safety

Bed Accessories



DMI® Vinyl Bed Rail Cushions with Non-Allergenic Cover

ITEM # 551-1964-0100

- ✦ Bed bumpers help to prevent injuries in children and adults and are designed to fit twin, full, double, queen and king size beds with a box spring.
- ✦ Protects the bed rail for toddlers, elderly, handicap or disabled to provide reliable protection, comfort and safety while preventing entrapment or injuries to limbs.
- ✦ Easy to install by attaching to bed rails with convenient and simple hook and loop enclosures. They also easily fold for convenient transit or storage.
- ✦ Size is 60"x 15"x 0.5". Includes 2 covers. Bed Rail is NOT included.



DMI® Extra Large Bedside Fall Protection Mat

ITEM # 640-0265-0000

- ✦ Provides superior protection against falling related injuries with its thick padding.
- ✦ Non-slip backing secures the mat in place and the textured grip allows for secure footing.
- ✦ Designed with smooth beveled edges to prevent against trips facilities or at home
- ✦ 70"x 24"x .5"



DMI® Bed Assist Rail

ITEM # 551-1966-1900

- ✦ The adjustable bed assist rail system adds additional support for the elderly, seniors and for adults who have difficulty getting in and out of bed
- ✦ Bed bar height: 30.5"- 38"
- ✦ Weight capacity: 250 lbs.



DMI® Deluxe Overbed Tilt-Top Table

- ✦ Laminate top, chrome-plated steel column and base.
- ✦ Tilts either direction, forward or backward.
- ✦ 2" hooded ball-bearing locking casters.

ITEM #	HEIGHT	QTY
553-4054-0400	34-46 inches	1
553-4056-0400	25.5-38.5 inches	1

Bed Safety

Blankets



DMI® Weighted Blanket - 17lbs, 80"x 60"

ITEM # 650-1114-0600

- + Sleep well with our soft, cozy, and comforting weighted blanket. Cool enough to be used during any season with our ultra-breathable materials and design.
- + The 17lb weight contours to your body, promoting a deep sense of calm and relaxation as you read or enjoy bingeing your favorite show.
- + The large 80"x 60" size is perfect for most adults, and kids will love to be wrapped with this blanket as well. Can be used as a sensory blanket.
- + The durable 5 layer design consists soft microfiber for extra comfort and breathability, polyester padding to keep the glass beads evenly distributed, and the non-toxic glass beads that apply even and gentle pressure.
- + 3.25" squares for even weight distribution of the non-toxic glass beads. 8 loops for easy fastening.



DMI® Blanket Lift Bar Support Frame

ITEM # 559-2028-0000

- + Lift blankets and bedding off of your feet and legs to protect sensitive skin areas.
- + Adjustable blanket lifter bar lifts to 19 inches (*Note: since it inserts under the mattress, the clearance above the mattress will be less than 19 inches and will vary depending on the thickness of your mattress. Works best on standard mattresses.*)
- + Can be used on either side of the bed or at the end of the bed by sliding under the mattress
- + Easy to assemble and quickly inserts between the box spring and mattress.
- + Frame measures 20 inches across.



DMI® Econo-Blanket Emergency Heavy-Duty Insulating Blanket, 54"x 80"

ITEM # 650-1131-0000

- + Be prepared in emergencies! This convenient emergency blanket will keep you warm during a visit to the hospital or in any other emergency situation. It will be a nice addition for ambulance, police and fire units or for individuals wanting an emergency blanket in their home, office or car.
- + Made of heavy-duty yellow polyester with cellulose matting insulation that will keep you warm in cold conditions.
- + Perfect when camping, hiking or engaging in other outdoor activities and sports.
- + Bright yellow color is easy to spot during an emergency.

Thermometers

Infrared Thermometers



HealthSmart® Compact Digital Ear Thermometer

ITEM # 18-210-000

- + Clinically accurate readings in seconds. No probe covers required! This thermometer features up-to-date infrared technology to deliver the most accurate results.
- + Measures ear and ambient (air) temperatures. Color-coded fever alarm. An LED light in-between the buttons turns red when your temperature is above 100.4 degrees Fahrenheit. It turns green if there is no fever present.
- + Date and time stamp and 9-reading memory storage allow you to easily keep track of your progress



HealthSmart® Standard Instant Read Infrared Digital Ear Thermometer

ITEM # 18-220-000

- + Clinically accurate readings in seconds. This thermometer features up-to-date infrared technology to deliver the most accurate results. The visual fever alarm tells you when a fever is present.
- + Measures ear, object and ambient (AIR) temperatures. This sleek thermometer includes three measurement modes for greater versatility.
- + You don't have to touch these probe covers when attaching them to the thermometer.
- + Date and time stamp and 10-reading memory storage allow you to easily keep track of your progress.
- + INCLUDES: 30 disposable probe (lens) covers, Fahrenheit/Celsius readouts, auto shutoff, storage stand.



HealthSmart® Non-Contact Instant Read Infrared Digital Forehead Thermometer

ITEM # 18-545-000

- + Integrated distance sensor: provides quick, clinically accurate readings with no need for skin contact. The non-contact feature is extremely hygienic and accurate with no need for covers.
- + High temp alarm: The ring turns red when temperatures are 100.4 or greater and green if temperatures are less than 100.4. Measures in both Fahrenheit and Celsius.
- + Memory storage: A 9 reading memory helps monitor temperatures overtime or between multiple individuals.
- + 3 temperature modes: body, object or air. Scan your child for a fever, measure the warmth of your baby's bottle or bath water or test the temperature of the air.

Thermometers

Infrared Thermometers



HealthSmart® Non-Contact Instant Read Infrared Digital Forehead Thermometer

ITEM # 18-555-000

- + No contact digital thermometer design measures forehead and object temperatures in three seconds with clinical accuracy.
- + Infrared thermometer features two temperature modes: body and object scan your child for a fever or measure the warmth of your baby's bottle or bath water.
- + Memory storage: a 10 reading memory helps monitor temperatures overtime or between multiple individuals.
- + Automatic shutoff with Fahrenheit or Celsius readout.



HealthSmart® Talking Infrared Ear & Forehead Thermometer

ITEM # 18-930-000

- + This talking infrared & ear thermometer is the only thermometer you will ever need! Designed for all ages with washable ear thermometer probe and an infrared touchless attachment that can even take the temperature of objects!
- + Comes equipped with several features including a 3-color backlit display that can be changed to show temperatures in both Fahrenheit and Celsius; a 30-reading memory bank; a visual fever alarm; clear audio readings in both English & Spanish.
- + Instant scan technology delivers accurate temperature results instantly without having to wait, making it perfect for getting fast and accurate temperature readings with children!



HealthSmart® Disposable Lens Covers for the Standard Digital Ear Thermometer

ITEM # 18-225-000

- + Helps prevent the spread of germs. Provides a safe and hygienic way to take the temperatures of multiple people.
- + Hands-free lens cover dispenser! You don't have to touch these probe covers when attaching or ejecting them from the thermometer.
- + Specially designed for the HealthSmart Standard Digital Ear Thermometer (18-220-000)
- + Simple to use. Just use and dispose, as many times as needed.
- + 45 disposable probe covers included. You will always be prepared when someone is feeling under the weather.

Thermometers

Digital Thermometers



MABIS® Flex Tip 20-Second Digital Thermometer

ITEM # 15-920-000

- ✦ Includes: a long-life battery (good for approximately 3, 000 temperatures), storage case and 5 probe covers.
- ✦ Fast readings. 20 second readout in Fahrenheit for oral or rectal readings; 30 seconds for underarm readings
- ✦ Convenience: a helpful tone signals peak temperature. The memory recalls your last reading. Auto shutoff saves battery power.



MABIS® Hospi-Therm II Kit™ 60-Second Thermometer, Dual Scale

ITEM # 15-713-000

- ✦ Convenient for travel, comes with a protective case and 5 disposable thermometer probe covers.
- ✦ Oral, rectal and underarm thermometer recalls your last temperature reading and a beeper sounds when peak temperature is reached.



MABIS® 9-Second Waterproof Digital Thermometer

ITEM # 15-736-000

- ✦ The flexible tip conforms to the mouth and stays in place for added comfort.
- ✦ 6x faster than traditional digital thermometers. This versatile thermometer produces rectal (9 seconds), oral (16 seconds) and underarm (25 seconds) readouts in no time.
- ✦ Includes 5 probe covers, sleek storage case, auto shutoff and replaceable long-life battery.



MABIS® Basal Digital Thermometer

ITEM # 15-639-000

- ✦ Easily detect and track ovulation by conveniently testing basal body temperature.
- ✦ Easy to read LCD display informs you with a helpful tone when it registers the peak temperature.
- ✦ Includes: clear plastic storage case probe covers, replaceable LR41 long-life battery, and a 12-month supply of ovulation charts.



MABIS® 60-Second Clinically Accurate Digital Thermometer

ITEM # 15-691-000

- ✦ Accurate results to measure oral, rectal and underarm temperatures to 2/10th of a degree Fahrenheit.
- ✦ Great for adults, babies, and pets. Tone indicator beeps at peak temperature while another tone indicates when temperatures are above 99.5 degrees Fahrenheit.
- ✦ Includes; 1 Thermometer with storage case, battery and 5 probe covers.



MABIS® Jumbo Display 60-Second Digital Thermometer

ITEM # 15-720-000

- ✦ 60 second readout in Fahrenheit for oral or rectal readings; 5 minutes for underarm readings.
- ✦ A helpful tone signals peak temperature. The memory recalls your last reading. Auto shutoff saves battery power.
- ✦ Includes: A long-life battery (good for approximately 3,000 temperatures), plastic storage case and 5 probe covers.

Thermometers

Digital Thermometers



MABIS® Glow-in-the-Dark 8-Second Digital Thermometer

ITEM # 15-878-000

- ✦ 8 second clinically accurate results to measure oral, rectal and underarm temperatures to 2/10th of a degree Fahrenheit.
- ✦ Recalls last reading making it easier to keep track of daily progress.
- ✦ Tone indicator beeps at peak temperature while another tone indicates when temperatures are above 99.5 degrees Fahrenheit.
- ✦ Large easy to read digital display for easy viewing and monitoring with auto shutoff.
- ✦ Includes: 1 Thermometer with convenient storage case, battery (good for approx. 3000 readings) and 5 probe covers.



MABIS® Disposable Probe Covers for Digital Thermometers

- ✦ The MABIS Disposable Probe Covers provide a safer, more hygienic way to take your family's temperature by helping to reduce the spread of germs. They come in handy when you have to take multiple temperatures.
- ✦ Highly versatile and easy-to-use! These probe covers are sized to fit most digital thermometers and can be used orally, rectally or under the arm.
- ✦ Fits conveniently in your purse or bag so you can always have these probe covers ready to go.

ITEM

15-618-000

15-617-000

QTY

100/box

500/box

Respiratory

Steam Inhalers



MABIS® Steam Inhaler Vaporizer with Aromatherapy Diffuser

ITEM # 40-741-000

- + Facial steamer naturally and effectively helps relieve respiratory symptoms associated with a cold, sore throat, cough, flu, laryngitis, bronchitis, sinusitis and asthma.
- + Oil diffusing aromatherapy option provides the ability to infuse the steam with the convenient aromatherapy tray making it easy to diffuse oils into the air. Oils sold separately.
- + Measures 4x9x10 and weighs only 4 pounds. Includes a soft, flexible Non Latex face mask, extension tube, 25 mL measuring cup and 60 mL Aromatherapy Tank with a 5 foot power cord.



HealthSmart® Digger Dog® and Margo Moo® Steam Inhalers

- + Quick therapy is delivered in 6-9 minutes and offers variable steam adjustments to relieve symptoms of allergies, bronchitis, colds, flu, laryngitis, rhinitis, sinusitis and more.
- + Variable steam adjustment allows small particles for inhaling through the nose and large particles for inhaling through the mouth.
- + Includes soft, child-sized flexible mask; drain and aromatherapy tank; indicator light; measuring cup and 5-foot cord. Product weighs 1.5 lbs.

ITEM #	COLOR	QTY
40-750-000	Margo Moo	1
40-751-000	Digger Dog	1



Mabis® Steam Inhaler with Facial Mask

ITEM # 40-742-000

- + Transform your daily routine with this face steamer for facial deep cleaning & revitalizing your skin.
- + Adjustable nasal attachment designed to target specific areas for maximum relief. Steam inhaler ensures less sinus congestion & promotes respiratory wellness.
- + No filters required. Easily switch between steamer facial & nose vapor inhaler, adjust intensity & enjoy.

Respiratory

Humidifiers & Aspirators



Habitat® Cool Mist Ultrasonic Humidifier with Large 2.5L Tank

ITEM # 40-687-000

- + Bedroom humidifier features ultrasonic cool mist technology to moisturize the air you breathe for up to 24 hours of continuous mist.
- + Runs whisper quiet without hums, whistles, or crackles. Perfect humidifier for baby's nursery or a toddler's bedroom.
- + Air humidifier with adjustable mist knob and soothing LED night light that changes 7 colors while the humidifier runs, with option to turn off the light if you choose.
- + Covers large rooms up to 300 sq. ft. Compact design makes it perfect for home office desks and any nightstand.



HealthSmart® Cube Mate Personal Humidifier

ITEM # 40-682-000

- + 8.45 fluid ounce water tank allows cool mist humidifier to run non stop for 5 hours.
- + Add a couple drops of fragrance or essential oil (*not included*) into the aromatherapy oil diffuser tray.
- + Small 4.75" x 4.75" x 4.75" design makes it ideal for office desks and childrens' rooms.



HealthSmart® Battery Powered Baby Nasal Aspirator

- + 3 suction levels. Easy and effective to help clear mucus or fluids..
- + 3 nozzle sizes made from food-grade BPA free silicone.
- + Nozzle sizes: Pink: < 3 months; Blue: 3-12 months; Orange: 12+ months.
- + Plays 3 different soothing melodies to calm the baby while using. Adjustable volume.
- + LCD display to view settings.

ITEM #	COLOR	QTY
650-4004-0300	Nasal Aspirator	1
650-4004-0310	Replacement Tips & Cups	1



DMI® Bulb Syringe Nasal Aspirator

ITEM # 650-4004-0121

- + Manual aspirator
- + Ideal for use with newborns and infants
- + Can also be used as an ear syringe
- + 2 ounces

Respiratory

Diffusers



HealthSmart® Essential Oil Humidifier Diffuser, 500mL

ITEM # 40-500-037

- ✦ The 500mL tank is large enough to use in any size room and the tank is easy to clean and maintain so the unit lasts for years
- ✦ Features a smart touch panel to easily control the lighting, high or low mist mode and a 1hr/3hr/6hr timer that will keep misting until the water runs out.
- ✦ Colorful mood light has the ability to cycle through 7 different colors or stay on one.
- ✦ Scent diffuser comes with an AC adapter (located inside the tank), 6ft power cord and user manual. Essential Oils sold separately. For best results, use distilled water.

ITEM #	COLOR	QTY
40-500-190	White	1
40-500-037	Wood Grain	1



HealthSmart® Essential Oil Humidifier Diffuser, 150mL

ITEM # 40-510-000

- ✦ Oil diffuser will automatically and safety shut off once the water runs out so the unit doesn't overheat. The 150mL tank is large enough to use in any size room and the tank is easy to clean and maintain so the unit lasts for years.
- ✦ Features a panel to easily control the 2 misting modes (continuous or intermittent) that will keep misting until the water runs out. The green light will signify intermittent mode (up to 6.5 hour run time) and the red light will signify continuous mode (up to 4.5 hour run time).
- ✦ The beautiful and modern wood grain base or white base complements any room. It is the perfect apartment essential, dorm essential or new home essential to bring peace and tranquility anywhere.

ITEM #	COLOR	QTY
40-510-000	White	1
40-510-100	Wood Grain	1



Respiratory

Air Purifiers



Habitat® Medium Room Air Purifier with HEPA 13 Activated Carbon Filtration System

ITEM # 40-445-190

- ✦ Our large air purifier has a 3 speed fan is ideal for medium sized rooms up to 280 sq feet and 4 run time modes (1, 2, 4, and 8 hours) plus a sleep mode.
- ✦ Air quality sensor displaying good, average, or poor air quality, 3 fan speeds and automatic mode, smart filter replacement reminder that automatically alerts you when it's time to replace the filters, child lock, and 1 year limited warranty.
- ✦ Air Purifier Specs - Size: 13 x 7 x 20 Inches. 11 pounds. Comes with Instruction Manual, Prefilter, and HEPA 13+ Activated Carbon filter. Replacement filter options available for purchase include prefilter, HEPA 13+ Carbon, and HEPA 13+ Carbon, PET, & Silver Ion.



Habitat® Small Room Air Purifier with HEPA 13 Filtration System

ITEM # 40-440-190

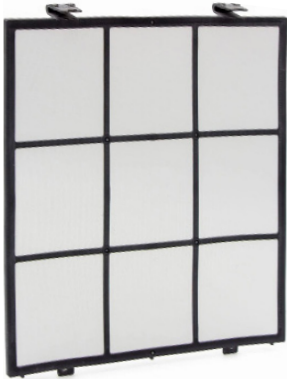
- ✦ A sleekly designed air filtration system that enhances the air quality in small and medium spaces while fitting in seamlessly with any room décor. True HEPA filtration captures 99.97% of airborne particles measuring 0.3 microns.
- ✦ Traps pollutants like pollen, dust, mold, pet dander, and smoke to completely transform your everyday environment into a haven for fresh air. It also helps prevent illness by capturing bacteria and viruses!
- ✦ The Habitat 150A(e) features a Realtime Air Quality Sensor that tests the air quality in your space. A filter replacement reminder, auto and sleep modes, and two fan speeds. Quiet 55dB max speed fan cuts out the noise.
- ✦ Covers up to 900ft². Dimensions: 8.27" x 8.27" x 12.64"



HealthSmart® UV-C Air Sanitizer

ITEM # 40-550-020

- ✦ Portable air purifier plugs in to any outlet and starts cleaning immediately. Unit covers up to 300 square feet making it the perfect air freshener for bedrooms, bathrooms, kitchens and living rooms
- ✦ Mini air purifier can be used with or without the fan on. It is on when the 'I' on the button is pushed in. The fan has been thoughtfully designed to be silent and not disturbing
- ✦ Plug in air purifier specs: 2.56 x 1.65 x 6.10 weighing 4.76 oz. Once Plugged in to any 120v outlet, the unit will automatically turn on but may take a few minutes for the bulb to heat and light up



Habitat® 280a(e) Air Purifier Replacement Mesh Pre-Filter

ITEM # 40-445-001

- ✦ Replacement Mesh Pre-Filter for Habitat 280a(e) Air Purifier
- ✦ Premium mesh pre-filter replacement for Habitat 280a(e) Air Purifier.
- ✦ Material: Nylon mesh with black plastic frame. Size: 10.5" L x 1.1" x 12" H.



Habitat® 280a(e) Air Purifier Replacement Filter HEPA 13

- ✦ Replacement HEPA 13 Activated Carbon Filter for Habitat 280a(e) Air Purifier
- ✦ Premium HEPA 13 Activated Carbon Replacement Filter for Habitat 280a(e) Air Purifier
- ✦ HEPA 13 captures 99.97% of all airborne particles as small as 0.3 microns.
- ✦ 1.75"D x 10.25"W x 11"H

ITEM #	DESCRIPTION	QTY
40-445-002	HEPA13 + Carbon	1
40-445-003	HEPA13 + Carbon+PET+Silver Ion	1



Habitat® HEPA 13 + Activated Carbon Replacement Filter

- ✦ Replacement for the Habitat 150A(e) air purifier. Captures 99.97% of airborne particles measuring .03 microns.
- ✦ The activated carbon feature traps and removes everyday odors from the air.
- ✦ Cleans and captures for up to 8 months before needing to be replaced.
- ✦ 7"L x 7"W x 6.4"H

ITEM #	DESCRIPTION	QTY
40-440-001	HEPA13	1
40-440-002	HEPA13 + Carbon	1

Respiratory

Pulse Oximeters



HealthSmart® Deluxe OLED Fingertip Pulse Oximeter

ITEM # 40-817-000

- ✦ The oximeter is accurate and reliable to determine SpO2, blood oxygen saturation level and pulse rate in seconds displayed on a large digital LED screen.
- ✦ 4 display modes including pulse waveform display - change the display orientation with the press of a button; the oxygen monitor displays easy to read numbers on a large OLED digital display.
- ✦ The pulse ox operates with one button and 3 modes: power off, sleep and measure. Finger pulse ox automatically goes into sleep mode within 8 seconds after the finger has been removed.
- ✦ Batteries and lanyard included - package includes one pulse Ox, lanyard, 2 AAA batteries and instructions in both English and Spanish.



HealthSmart® Fingertip LED Pulse Oximeter

- ✦ The oximeter is accurate and reliable to determine SpO2, blood oxygen saturation level and pulse rate in seconds displayed on a large digital LED screen.
- ✦ Easy to read LED display - the oxygen monitor displays easy to read numbers on a large LED digital display and a finger chamber that accommodates various sizes of fingers for the most accurate and quick read.
- ✦ The pulse ox operates with one button and 3 modes: power off, sleep and measure. Automatically goes into sleep mode within 8 seconds after the finger has been removed.

ITEM #	DISPLAY	QTY
40-816-000	Green	1
40-815-000	Red	1



Healthsmart® Digital Fingertip Sport Pulse Oximeter

ITEM # 40-819-000

- ✦ A high-performance pulse oximeter designed for training and cardio workouts. Featherweight design with included lanyard makes it a perfect match for high intensity exercise like jogging, cycling, HIIT training and more.
- ✦ Clinically accurate with fast results make this a reliable oxygen monitor that will give consistent results with every use. Compatible with any finger size.
- ✦ Large easy-to-read two-way screen LED display shows blood oxygen content, pulse rate and pulse bar. Custom alarm parameters that will alert you if readings hit outside your desired high and low range.
- ✦ Low-battery alert with automatic shutoff and flashing alarm (2) AAA batteries included. Accuracy rating: 99%. Pulse rate measurement range: 30-240 bpm.

Digital Blood Pressure Monitors

Arm Monitors



HealthSmart® Premium Series Digital Blood Pressure

ITEM # 04-655-001

- + 120-Reading Memory Storage (60 each for 2 users) with date and time stamp
- + Irregular heart beat indicator and averages last 3 readings
- + Powered by batteries or AC adapter
- + High contrast backlit LCD screen display
- + Wide-range arm cuff is 8.66 to 16.53 inches
- + Large Zipped Case



HealthSmart® Select Series Auto Blood Pressure Monitor

ITEM # 04-645-001

- + 120 reading memory storage (60 each for two users) with date and time stamp
- + Irregular heart beat indicator and averages last 3 readings
- + Backlit LCD screen display
- + Wide-range arm cuff is 8.66 to 16.53 inches
- + Zippered Case



HealthSmart® Standard Series Auto Blood Pressure Monitor

ITEM # 04-635-001

- + 60 reading memory (30 each for two users) with date and time stamp
- + Irregular heart beat indicator and averages last 3 readings
- + LCD Screen Display
- + Wide-range arm cuff is 8.66 to 16.53 inches
- + Hard protective case



Mabis® Digital Talking Arm Blood Pressure Monitor

ITEM # 04-650-001

- + 396 reading memory storage (99 each for four users) with date and time stamp
- + Audio readings in English and Spanish
- + Irregular heart beat indicator and averages last 3 readings
- + LCD Screen Display
- + Wide-range arm cuff is 8.66 to 16.53 inches
- + Hard protective case

HealthSmart® Upper Arm Blood Pressure Monitor Replacement Cuff

ITEM #

04-240-006

04-245-000

SIZE

Large Adult

Universal

DIMENSIONS

16.5" x 18.875"

8.6 x 16.5"

QTY

1

1

Digital Blood Pressure Monitors

Wrist Monitors



HealthSmart® Premium Series Digital Blood Pressure

ITEM # 04-820-001

- + 120-Reading Memory Storage (60 each for 2 users) with date and time stamp
- + Irregular heart beat indicator and averages last 3 readings
- + High contrast backlit LCD screen
- + Wrist cuff fits 5.3 to 8.5 inches
- + Clinically accurate with heart spot technology
- + Hard protective case



HealthSmart® Standard Series Wrist Blood Pressure Monitor

ITEM # 04-810-001

- + 120-Reading Memory Storage (60 each for 2 users) with date and time stamp
- + Irregular heart beat indicator and averages last 3 readings
- + LCD screen display
- + Wrist cuff fits 5.3 to 8.5 inches
- + Hard protective case



Mabis® Digital Wrist Blood Pressure Monitor

ITEM # 04-615-001

- + 120-reading memory storage with date and time stamp
- + Irregular heart beat indicator and averages last 3 readings
- + LCD screen display
- + Wrist cuff fits: 5.3 to 8.5 inches
- + Hard protective case



Mabis® Digital Talking Wrist Blood Pressure Monitor

ITEM # 04-815-001

- + 396 reading memory storage (99 each for four users) with date and time stamp
- + Audio readings in English and Spanish
- + Irregular heart beat indicator and averages last 3 readings
- + LCD screen display
- + Wrist cuff fits 5.3 to 8.5 inches
- + Hard protective case

Hot/Cold Therapy

Heating Pads



DMI® Electric Heating Pads

- ✦ 4 heat options to find relief from pain and tension whether in the back, hips, legs, muscle cramps, period cramps or neck and shoulder tension
- ✦ The automatic shutoff timer turns the digital heating pad off after 2 hours of use for safe and secure use while sleeping, working or watching TV.
- ✦ Contours to every body part with a stream of heat and a soft flexible plush cover.
- ✦ Foam insert moisture sheet for moist heat is effective in providing deeper penetration of the tissue. Moist heat has the ability to change the tissue temperature rapidly and features an extra long tangle free cord that reaches up to 9 feet for comfortable use in any resting position.

ITEM #	SIZE	DIMENSIONS	QTY
619-5131-1900	Medium	14.5 x 12"	1
619-5133-1900	XL	24.5 x 11"	1
619-5138-1900	Medium, Digital	14.5 x 12"	1



DMI® Neck & Shoulder Heating Pad

- ✦ Contoured to provide direct and targeted heat therapy in the neck, back of head, shoulders and upper back to help relieve pain and tension associated to muscles pain, spasms or headaches.
- ✦ Weighted edges and snap closure keep the heating pad snug and in place for maximum comfort.
- ✦ Multiple heat settings and a 2 hour auto shutoff feature to help avoid excessive heating and ensure safety during extended use. The 9 ft cord offers ease and accessibility for comfortable use in any resting position.
- ✦ Made of a soft, comfortable micro fleece cover that is perfect for everyday use and can be either hand or machine washed for convenience.

ITEM #	SIZE	DIMENSIONS	HEAT LEVELS	QTY
619-5136-1900	Medium	18 x 15"	3	1
619-5139-1900	Large	23 x 19"	4	1
619-5137-1900	X-Large	25 x 26"	3	1



DMI® Migraine Relief Cap

ITEM # 614-0057-0001

- ✦ A soothing, natural solution for migraine, headache, stress, sinus, and puffy eye relief. Can be frozen for cold therapy and microwaved for hot therapy.
- ✦ Full 360° gel coverage with premium quality fabric allows the perfect amount of therapeutic compression making this the most comfortable therapeutic mask with no bulky hot/cold insert.
- ✦ UV blocking design allows migraine relief to happen in any light environment. It also doubles as the perfect sleep mask and is comfortable enough to be worn throughout an entire night.

www.livehealthsmart.com

Hot/Cold Therapy

Hot/Cold Compress and Ice Packs



Vivi Relax-a-Bac™ Scarf Wrap for Hot/Cold Therapy

- ✦ Relieves pain in two different ways – as a microwavable heating pad or as a cold compress.
- ✦ The unique clay beads within the scarf wrap are 100% all-natural, safe and non-toxic. They have superior ability to hold the heat or cold longer than most other kinds of beads. Plus, they are sewn into individual pockets for even therapeutic relief and won't shift to one end.
- ✦ This extra-heavy wrap adds pressure for deep, penetrating tissue relief for your neck, shoulders, arms, legs, knees or back. The soft waffle weave cover with zipper is machine washable. Convenient handles help you position the wrap for a variety of uses.

ITEM #	COLOR	QTY
616-4605-0300	Gray	1
616-4605-2000	Lavender	1



Vivi Relax-a-Bac™ Neck Wrap

- ✦ Relieves pain in two different ways – as a microwavable heating pad or as a cold compress.
- ✦ This extra-heavy wrap adds pressure for deep, penetrating tissue relief. The back section of the wrap is wider than most for greater coverage of your neck, shoulder and upper back areas. The soft, plush cover with zipper is machine washable.
- ✦ Size: 13 ½ x 16 ¼ inches.

ITEM #	COLOR	QTY
616-4612-0300	Gray	1
616-4612-2000	Lavender	1



DMI® Reusable Rubber Ice Bag

ITEM # 42-841-000

- ✦ Ice bag stays cold for a long time, longer than gel packs, ice packs, or cold packs. Our reusable ice bag is ideal for cold therapy to help reduce pain and swelling from muscle aches, sprains, and strains, and help speed up recovery.
- ✦ Great for multi-use - Our 11" reusable ice bag is perfect to keep in your car, desk, luggage, backpack, or sports bag. For heat therapy, add hot water (not boiling) to help with upset stomachs, migraines, sinuses and more.



DMI® Reusable Gel Pack, 2pk

ITEM # 614-0056-9716

- ✦ **HOT:** Microwave to relieve pain associated with stiff joints and muscles. Increases blood flow on the treated area.
- ✦ **COLD:** Place in the freezer and apply to pain area to quickly reduce swelling and bruising from pain caused by injury, strains, and sprains.
- ✦ The hot & cold pack is safe for direct to skin use. The compress stays flexible to avoid slipping or bending.
- ✦ Contains: (1) Small 7.25" x 5.25" and (1) Large 8.75" x 6".

Fitness & Physical Therapy

Exercise Therapy



DMI® Hand Exercise Strengtheners

ITEM # 640-8182-0002

- + These compact, easy to use hand strengtheners are perfect for improving strength and flexibility of forearms, wrists, fingers, and hands.
- + Excellent for recovery of hand and arm injuries.
- + Easily adjust the resistance from 10 - 130lbs as needed and conveniently keep track with the grip counter.



DMI® Stress Balls

ITEM # 640-8180-0003

- + Improve finger and grip strength for athletes and musicians
- + Rehabilitation and injury prevention
- + Helps with stress and anxiety. Convenient and compact to use anywhere
- + Ball size: 6 x 4cm. 3 levels for resistance: 33lbs, 55lbs, 66lbs



DMI® Wrist and Ankle Weights

ITEM # 660-2006-0002

- + Includes (2) 5lb weights.
- + These universal-size ankle weights extend to 14.56", with adjustable hook and loop straps to provide a comfortable fit for wrists and ankles of all sizes.
- + Adjustable weight with 5 removable sand pockets, each weighing 1lb.



Heelbo® Exercise Resistance Bands

ITEM # 660-2040-0005

- + 5 resistance levels. Each color has a different resistance level.
- + Using exercise resistance bands puts less stress on joints.
- + Great for physical therapy, rehabilitation, stretching, strength training and more!
- + Resistance levels from 3.59lbs up to a max 29lbs.



Heelbo® Fabric Resistance Bands

ITEM # 660-2040-0005

- + 3 resistance levels. Each color has a different resistance level.
- + Resistance Levels: Teal (18-32lbs) Pink (30-50lbs) Blue (45-70 lbs.)

ITEM #	COLOR	QTY
660-2040-0100	Pastels	1
660-2040-0200	Greys	1

Fitness & Physical Therapy

Exercise Therapy



Zewa® Fitness Smart Health Watch

ITEM # 21201

- ✦ iOS & Android compatible.
- ✦ Continuous pulse measurement and real-time heartrate monitoring. The watch even tracks your oxygen levels, giving you a 365 diagnostic view of your vitals.
- ✦ Accurate statistics on steps, calories burned, deviations in sleep patterns, real-time heartrate monitoring and even sedentary reminders



Zewa® Fitness Activity Tracker

Item # 03-405-000

- ✦ Lightweight and comfortable.
- ✦ The free Zewa Fit Pro app synchs with the tracker for accurate statistics on steps, calories burned, deviations in sleep patterns, real-time heartrate monitoring and even sedentary reminders!
- ✦ The tracker also syncs seamlessly with your native Apple & Google Health Apps. Fast charges by standard USB.



DMI® Mini Exercise Bike Fitness Mini Cycle with Mat

ITEM # 660-2003-0200

- ✦ Enjoy low impact bicycle pedaling exercise from a chair or place on a table to exercise your arms.
- ✦ Customize your workout using the adjustable tension knob; built in digital monitor displays number of revolutions in a workout, estimated calories burned, elapsed time and total revolution count
- ✦ Compact size makes the mini bike easy to store when not in use
- ✦ Includes a slip resistant 19 x 14.5 inch mat.



DMI® Lightweight Mini Pedal Exerciser for Arms and Legs

ITEM # 660-2008-0099

- ✦ Pedal from the comfort of your own chair or place on a table to exercise your arms.
- ✦ This upper and lower body exerciser in one helps improve circulation while toning and strengthening muscles. Excellent for seniors and those in wheelchairs to improve stamina.
- ✦ Great for rehab after knee replacement and for improving range of motion.
- ✦ Turn the knob to increase or reduce resistance.
- ✦ 16 x 20 ½ x 12 inches

Fitness & Physical Therapy

Wrist & Hand Therapy



Heelbo® Carpal Tunnel Brace

- ✦ Helps to relieve wrist pain associated to carpal tunnel, arthritis, and tendinitis through gentle compression and a flexible support splint to aid in proper hand and wrist alignment.
- ✦ Support beads on the palm support and improve circulation as it rests on a surface.

ITEM #	PRODUCT	QTY
555-8085-0121	Small	1
555-8085-0122	Medium	1
555-8085-0123	Large	1



Heelbo® Night Wrist Support

ITEM # 555-8087-0000

- ✦ Relieves wrist pain associated to carpal tunnel, arthritis, and tendinitis by aiding in proper hand and wrist alignment while sleeping.
- ✦ Beaded cushion support on the palm of the brace for added comfort.
- ✦ The night wrist support can be used on either left or right wrist.
- ✦ Adjustable strap around wrist as needed for comfort while sleeping.



Heelbo® Arthritis Gloves

- ✦ All day relief from arthritis pain and joint swelling. Provides mild compression to enhance blood circulation and reduce swelling and stiffness.
- ✦ Re-enforced seams for long lasting durability. Open finger design.

ITEM #	PRODUCT	QTY
555-8087-0121	Small	1
555-8087-0122	Medium	1
555-8087-0123	Large	1



Heelbo® Adjustable Thumb Brace

ITEM # 555-8089-0000

- ✦ Reversible thumb brace fits left or right wrist.
- ✦ Support brace along entire thumb isolates and stabilizes thumb to help with fractures, sprains, arthritis and other chronic conditions.
- ✦ Adjustable thumb and wrist straps.



Heelbo® Universal Wrist Support Compression Brace

ITEM # 555-8090-0001

- ✦ Adjustable straps offer customizable compression.
- ✦ Made from moisture-wicking, breathable fabric
- ✦ Fits wrist circumferences 5.1"- 10.2", for both left and right wrist.
- ✦ Provides effective relief for carpal tunnel syndrome, tendonitis, and wrist pain.



Fitness & Physical Therapy

Cervical Devices



HealthSmart® Neck & Shoulder Traction

ITEM # 534-2013-0000

- ✦ The cervical traction device is designed to relieve neck and shoulder pain symptoms while helping to restore the natural curvature in your neck.
- ✦ Our device includes embedded magnets that help increase blood flow faster than devices without magnets, allowing for a quicker.
- ✦ The c-shaped opening forms perfectly to the curvature of the neck and the v-shaped base contours around the spine. This offers maximum support while in use.
- ✦ Bonus gift included! Hand massager helps relax stressed muscles and relieve pressure.



DMI® Over-the-Door Cervical Traction Set

- ✦ Cervical traction can be an effective treatment for neck pain and associate neck conditions when used under the direction of an authorized healthcare professional.
- ✦ System is portable – use at home, the office or while traveling. Includes a vinyl weight bag with graduated scale up to 20 pounds.
- ✦ One size foam padded head halter fits most. Includes all components necessary for assembly, no tools required.

ITEM #	PRODUCT	QTY
534-2014-0000	Traction Set	1
534-2018-0000	Replacement Bag	1
534-2020-1900	Replacement Head Halter	1



DMI® Foam Cervical Collar Neck Support

- ✦ Help your neck heal properly after an injury and prevent further injury by wearing this soft foam cervical collar while still retaining comfort.
- ✦ It offers comfortable support while reducing head and cervical vertebrae movement.
- ✦ Ribbed stockinet cover promotes air circulation and helps prevent heat buildup and perspiration.
- ✦ Hook and loop adjustment provides a custom fit.

ITEM #	SIZE	WIDTH	FIRMNESS	QTY
631-6040-0022	Medium	2.5 inches	Soft	1
631-6043-0022	Medium	3 inches	Soft	1

Fitness & Physical Therapy

Back Support & Muscle Therapy



DMI® Adjustable Posture Corrector

ITEM # 632-6222-0000

- ✦ The DMI Posture Corrector is designed to help reform your posture to alleviate upper and lower back and shoulder pain associated with detrimental sitting and standing posture.
- ✦ The back brace posture corrector is lightweight, breathable, comfortable, and is designed to be hardly noticeable. Perfect for wearing at home, the gym, work, or any event.
- ✦ Wearing our back straightener is simple! (1) Adjust Strap Length (2) Slide On The Corrector (3) Pull Straps To Fit (4) Apply Hook & Loop Ends to the Strap. For chest sizes of 30" to 43".



DMI® Adjustable Posture Corrector

- ✦ Transfers support from the lower back to thoracic spine and abdominal cavity.
- ✦ Removable, adjustable shoulder straps.
- ✦ Made of 9" elastic with 3" tension pull straps 4 flexible stays add proper alignment and support.

ITEM #	WAIST SIZE	QTY
632-6400-2221	28" - 40"	1
632-6400-2223	40- 54"	1



DMI® Posture Corrector

- ✦ This best-selling posture corrector helps you keep your shoulders back for more correct posture.
- ✦ It is thin enough to wear under clothing, making it ideal for use at home or outside.
- ✦ Note: to correct posture, the item will be tight fitting. For a looser fit, order the next size up.

ITEM #	CHEST SIZE	QTY
632-6224-1936	Medium-Large (38" - 40")	1
632-6224-1923	Large (42" - 44")	1
632-6224-1924	X-Large (46" - 48")	1

Fitness & Physical Therapy

Back Support & Muscle Therapy



DMI® Lumbar Support Back Brace with Removable Stays

- ✦ Promotes healing of injuries and helps prevent re-injury.
- ✦ Elastic construction provides consistent compression.
- ✦ Flexible steel stays provide extra back support.

ITEM #	WAIST SIZE	QTY
632-6405-2923	34" - 48"	1
632-6406-2924	42" - 54"	1



DMI® Large Elastic Back Support Brace with Crisscross Design, 36"- 42"

ITEM # 632-6409-0000

- ✦ Provides maximum lumbar and abdominal support with simple adjustability. The unique crisscross design provides extra tension for an increased level of stabilization.
- ✦ This back support aid promotes the healing of injuries and prevents re-injury. It is perfect for chronic pain such as those who suffer from Sciatica.
- ✦ Dual lumbar adjustment straps extend from the back and adhere to front panel to provide a customized fit and additional compression.



DMI® Universal Elastic Back Support Brace with Crisscross Design, 24"- 46"

ITEM # 632-6410-0000

- ✦ Provides maximum lumbar and abdominal support with simple adjustability. The unique crisscross design provides extra tension for an increased level of stabilization.
- ✦ Promotes the healing of injuries and prevents re-injury. It is perfect for chronic pain such as those who suffer from Sciatica.
- ✦ Double layered compression with back brace panels connecting and overlapping in the front for initial support.
- ✦ Additional dual lumbar adjustment straps extend from the back and adhere to front panel to provide a customized fit and additional compression.

Fitness & Physical Therapy

Back Support & Muscle Therapy



DMI® Elastic Abdominal Binder

- ✦ This abdominal binder offers unmatched support after surgery, pregnancy, tummy tuck, hysterectomy or c-section.
- ✦ Hook and loop adjustment gives you a comfortable and secure custom fit
- ✦ 3-Panel, 9 inch

ITEM #	WAIST SIZE	QTY
632-6404-1920	30" - 45"	1
632-6404-1924	46" - 62"	1



DMI® Upper Back Support Brace Perfect Posture

ITEM # 632-6223-1900

- ✦ Aligns your body by helping you maintain great posture as you sit or stand. The 1 inch elastic bands with reinforced crisscross design are helpful in restoring ideal body position.
- ✦ Effective yet discreet. This brace fits comfortably under your clothing while offering great upper back and shoulder support.

HealthSmart® Foam Roller

ITEM # 660-8001-1200



- ✦ Full body foam roller rolls out sore muscles, tendons and ligaments to relax and maintain flexibility to treat muscle pain, increase blood flow and flush stored lactic acid.
- ✦ Contoured shape for control and maneuverability with a textured surface to target pressure points for a deep massage as a back roller, foam roller for legs, roller massager or yoga roller.
- ✦ 4 levels of vibration intensity to provide the right amount of pressure and massage intensity with a one touch LED indicator.
- ✦ Runs up to 180 minutes with a 15 minute auto stop safety feature. Ideal for runners, yoga, Pilates, swimmers and physical therapy patients at home or in the gym.
- ✦ Battery powered and features integrated lithium ion batteries with an included AC wall charger. Roller measures 11.5 x 4.75 and weighs 3 pounds.

Fitness & Physical Therapy

Rehab Therapy



DMI® Post Op Shoe

- ✦ Foot pain relief, heel pain and broken toes are easy to rehab with open toe and heel with mesh upper to provide air circulation by keeping the foot from getting overheated.
- ✦ Can be worn on the right or left foot while hook and loop adjustable straps custom fit the height and width of the foot, bandage or cast.
- ✦ Non skid sole provides stability on any surface while providing comfortable immobilization to rehab post surgery, foot or toe injuries, bunions, hammer toes, plantar fasciitis, Lisfranc fractures, heel fractures, stress fractures or mortons neuroma.

ITEM #	SHOE SIZE	QTY
530-6045-0122	6-8	1
530-6046-0122	9-11	1



DMI® Pocket Style Arm Sling

- ✦ Helps relieve pain and prevents further injury. Use with or without a cast.
- ✦ Hook and loop adjustment delivers a custom fit.
- ✦ Made of durable polyester/cotton fabric with built-in wrist extender that offers added hand support.
- ✦ Machine washable.

ITEM #	SHOE SIZE	QTY
530-6045-0122	6-8	1
530-6046-0122	9-11	1



DMI® Over-the-Door Double Pulley Exercise Set for Shoulder and Arm

ITEM # 660-2030-0000

- ✦ Great for recovery after surgery or injuries or for improving strength and mobility.
- ✦ Enhances range of motion for arthritis, tendinitis, frozen shoulder syndrome, rotator cuff injury and bursitis.
- ✦ Easily attaches to most doors in under a minute.

Pressure Management

Seat Cushions



HealthSmart® Deluxe Swivel Seat Cushions

- ✦ 360° Swivel Seat Cushion converts any stationary chair into a swiveling chair! Helps relieve back, knee, or hip strain caused by twisting and turning when getting in and out of any seat.
- ✦ Designed with high grade foam that holds it's shape and feels soft and comfortable, helping to reduce pressure on the back and tailbone. Non-skid, flexible swivel base contours to seat and stays in place.
- ✦ Great for cars, chairs, offices, home, and more.
- ✦ Available in 12.5 and 15 inch diameter seats
- ✦ Swivel seat cushion is compact in size measuring 1-3/8 inch height.
- ✦ Removable cover is machine washable.

ITEM #	SIZE	COLOR	QTY
513-1994-0200	15 inch	Black	1
513-1994-0255	15 inch	Black Leather	1
513-1994-0355	15 inch	Gray	1
513-2994-0215	15 inch	Black with Tan Stripe	1
513-2994-0312	12.5 inch	Gray with Gray Stripe	1



DMI® Duro-Gel™ Flotation Seat Cushions

ITEM # 513-7634-2400

- ✦ Low-viscosity, water-based gel enclosed in a heat-sealed, heavy-gauge, leak proof vinyl pouch.
- ✦ Removable, washable cover.
- ✦ Size: 16 x 18 inches



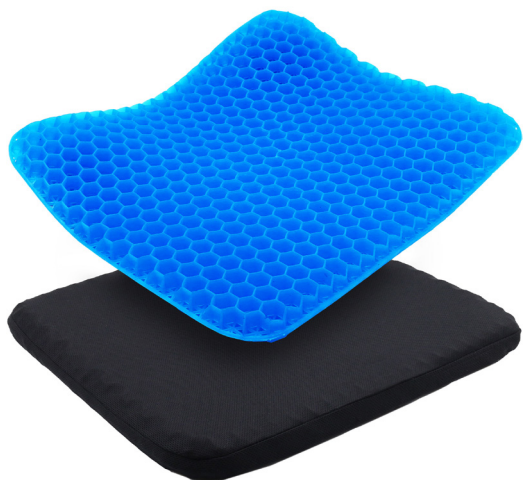
DMI® Gel Foam Seat Cushion

ITEM # 513-7637-0200

- ✦ Versatile cushion is perfect for wheelchairs, chairs, couches, sofas, and recliners.
- ✦ Soft gel insert with removable, waterproof black nylon cover is machine washable.
- ✦ Two convenient carrying handles.
- ✦ Measures 18 x 20 x 2.5 inches

Pressure Management

Seat Cushions



DMI® Gel Seat Cushion

ITEM # 513-7634-0000

- ✦ Breathable honeycomb design for ultimate air flow.
- ✦ Flexible and supportive gel cushion for maximum comfort
- ✦ Washable cover with anti-slip bottom keeps the cushion in place.
- ✦ Size: 17 x 15 x 1.3 inches



DMI® Reversible Gel Foam Seat Cushions

- ✦ Get the best of both worlds with this reversible gel foam cushion. One side of the cushion holds firm foam while the other side is cushioned by soft foam for ultimate versatility and comfort.
- ✦ Adds extra comfort to office chairs, dining chairs, wheelchairs, larger car seats, boats, RVs and much more.
- ✦ Removable cover has positioning straps and handles for easy carrying and transport.

ITEM #	COVER	COLOR	SIZE	QTY
513-7645-0200	Oxford Nylon	Black	16"x18"x2"	1
513-7644-0200	Nylon	Black	16"x20"x2"	1



DMI® Deluxe Seat Lift Seat Riser Car Cushion Pillow

ITEM # 513-8884-0200

- ✦ Firm 4-inch foam cushion provides lift and comfort; makes it easier to get out of low or soft chairs.
- ✦ Use in wheelchairs, conventional chairs, cars or anywhere additional lift is needed.
- ✦ Hardboard insert provides extra support; eliminates hammock effect when used in wheelchairs.
- ✦ Removable, black cover has 5-inch strap handles for easier carrying.

Pressure Management - *Seat Cushions*



DMI® Foam Seat Cushion for Wheelchair or Chair

- + Firm seat cushion adds support, comfort and height to wheelchairs, regular chairs or car seats, reducing pressure on your back and tailbone
- + It is super lightweight, making it great for increasing your comfort while traveling or attending events
- + Constructed of high density foam that will not crack or crumble
- + Removable polyester/cotton covers are machine washable

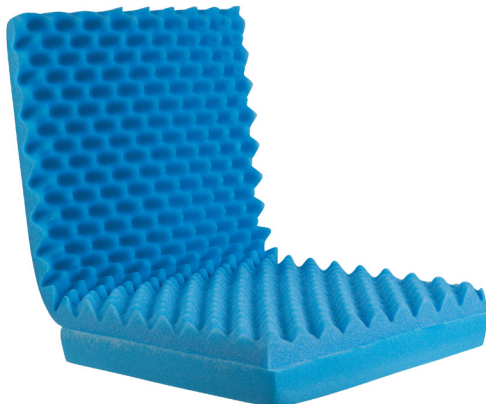
ITEM #	SIZE	COLOR	QTY
513-7602-2400	16 x 18 x 4 inches	Navy	1
513-8021-2400	16 x 18 x 3 inches	Navy	1
513-8020-0200	16 x 18 x 2 inches	Navy	1



DMI® Comfort Chair Pillow Cushions

- + Wheelchair cushion features soft, comforting padding that is ideal for wheelchairs or other chairs that need extra softness and support.
- + Wheelchair pad is great for home or office use as it molds and contours to the body to help prevent painful pressure sores.
- + Cushion contains highly absorbent material, great for incontinent patients; cushion is overstuffed with fiberfill and comes with six ties to help secure the cushion in place on your chair.
- + Product Specs: Seat Size - 16 x 16 inches; Back Size - 16 x 22 inches; Arm Size - 16 x 14 inches. Cushion is machine washable and filled with polyester fiberfill.

ITEM #	COLOR	QTY
513-7608-2400	Navy	1
513-7608-9910	Plaid	1



DMI® Foam Egg Crate Seat Cushion

- + Sculpted foam seat cushion provides comfort and support for those who sit for long periods of time.
- + Medical grade, egg-crate foam helps reduce or heal pressure sores and takes weight off sensitive areas.
- + Great for using on regular chairs, wheelchairs or recliners.
- + Excellent after surgery or injuries.

ITEM #	SIZE	COLOR	DESCRIPTION	QTY
552-8004-9910	16 x 18 x 4 inches	Plaid Color	Convolutd, No Back	1
552-8004-0000	16 x 18 x 4 inches	Blue	Convolutd, No Back	1
552-8005-0000	18 x 32 x 3 inches	Blue	Convolutd, w/Back	1
513-7606-9910	16 x 18 x 4 inches	Plaid Cover	High Density, No Back	1

Pressure Management - *Seat Cushions*



DMI® Premium Coccyx Seat Cushion

- + Helps promote better posture and alignment of the spine.
- + Breathable mesh cover with non-slip bottom.
- + Size: 17.25 x 14 x 2.75 inches

ITEM #	DESCRIPTION	QTY
513-7957-0200	Standard Foam	1
513-7958-0200	Memory Foam	1



DMI® Sloping Seat Mate™ Foam Coccyx Cushion - 3 in.

- + Make the seats in your home, office or car a more comforting, supportive place for your lower back and coccyx (tailbone).
- + This sloping foam seat cushion angles your spine correctly to help you avoid slouching.

ITEM #	SIZE	COLOR	QTY
513-7938-2400	18 x 14 x 1.5 inches	Navy	1
513-7939-2400	15 x 14 x 1.5 inches	Navy	1
513-7939-3700	15 x 14 x 1.5 inches	Camel	1



DMI® Coccyx Seat Cushions

- + Six-inch, v-shaped opening provides pressure relief for the coccyx/tailbone area.
- + Constructed of highly resilient polyurethane foam.
- + Size: 16 x 18 x 3 inches

ITEM #	SIZE	QTY
513-8015-2400	Without Insert	1
513-8015-2448	With Insert	1



DMI® Dual Cut Foam Coccyx Seat Cushion

ITEM # 513-7944-2400

- + Seat cushion is made with firm and medium density foam comfortably cushions your body in all the right places. This cushion provides comfort, support, and durability during prolonged sitting periods
- + Dual cushion design relieves pressure in the lower back, tailbone and perineal areas. With its clever cut down the middle, this cushion has two foam regions to alleviate pressure when you are sitting. Great for standard chairs, wheelchairs, office chairs, car seats, boats, RVs, and much more.
- + Specs: 16 x 18 x 3 Inches. Removable polyester/cotton cover is machine washable.

Pressure Management

Seat Cushions



DMI® Convoluted Foam Ring Donut Seat Cushion

- ✦ Ideal for home, car or office.
- ✦ Removable polyester/cotton cover is machine washable.
- ✦ Reduces pressure point discomfort.
- ✦ High-density foam retains shape through repeated use.

ITEM #	SIZE	COLOR	QTY
513-7614-2400	18 x 15 x 3 inches	Navy	1
513-7614-9910	18 x 15 x 3 inches	Plaid	1
513-8008-2400	16 x 13 x 3 inches	Navy	1



DMI® Molded Foam Ring Donut Seat Cushions

- ✦ Provides comfort and support when sitting for an extended period of time.
- ✦ Ideal after childbirth, for hemorrhoid sufferers or for those with lower back pain.
- ✦ Center hole is hidden by fabric making it discreet enough to take anywhere.
- ✦ Removable polyester/cotton cover is machine washable.

ITEM #	SIZE	COLOR	QTY
513-8014-2400	14 x 12.5 x 3 inches	Navy	1
513-8016-1900	16 x 13 x 3 inches	White	1
513-8016-2400	16 x 13 x 3 inches	Navy	1
513-8018-1900	18 x 15 x 3 inches	White	1
513-8018-2400	18 x 15 x 3 inches	Navy	1



DMI® Inflatable Rubber Ring Donut Seat Cushion

- ✦ Provides comfort and support when sitting for an extended period of time.
- ✦ Excellent for home, car, office or special events; folds compactly for storage.
- ✦ Easy to inflate to desired level of firmness with a bicycle-style pump.
- ✦ Weight capacity: 200 pounds

ITEM #	SIZE	COLOR	QTY
513-8006-0022	16 in; 5.5" center	Red	1
513-8006-0023	18 in; 6.5" center	Red	1

Pressure Management

Lumbar Support Cushions



DMI® Relax-a-Bac™ Lumbar Back Cushion with Insert and Strap

- ✦ Orthopedic, contoured design hugs your back, helping keep your spine in proper alignment; the removable solid board insert offers even more advanced support.
- ✦ Highly resilient foam keeps its shape; the elastic strap helps anchor the cushion to your chair
- ✦ The removable cover is machine washable, making clean-up a snap.

ITEM #	SIZE	COLOR	QTY
555-7302-0200	14 x 13 x 5 inch	Black	1
555-7302-0300	14 x 13 x 5 inch	Gray	1
555-7302-0700	14 x 13 x 5 inch	Burgundy	1



DMI® Lumbar Back Cushion with Strap

- ✦ Orthopedic, contoured design hugs your back, helping keep your spine in proper alignment; the removable solid board insert offers even more advanced support.
- ✦ Highly resilient foam keeps its shape; the elastic strap helps anchor the cushion to your chair
- ✦ The removable cover is machine washable, making clean-up a snap.

ITEM #	SIZE	COLOR	QTY
555-7300-0200	14 x 13 x 5 inch	Black	1
555-7300-0300	14 x 13 x 5 inch	Gray	1
555-7300-0700	14 x 13 x 5 inch	Burgundy	1
555-7300-2400HS	14 x 13 x 5 inch	Navy	1



DMI® Lumbar Back Support Cushions

- ✦ The cushion's orthopedic design helps to relieve tension and keep the spine in proper alignment.
- ✦ This lumbar support cushion makes a great travel pillow for your car or truck. Ease the pain that comes from long trips or even your daily commute.
- ✦ The polyester/cotton cover is removable and machine washable.

ITEM #	SIZE	COLOR	QTY
555-7301-0200	14 x 13 x 5 inch	Black	1

Pressure Management - Lumbar Support Cushions



DMI® Memory Foam Lumbar Cushions

- ✦ This soft, yet supportive memory foam cushion provides lumbar support to ease lower back pain and reduce pressure point sensitivity. It helps keep your spine in proper alignment in your home, office or car.
- ✦ Elastic strap holds the cushion in place.
- ✦ Attractive, removable cover is machine washable.

ITEM #	SIZE	COLOR	QTY
555-7921-0200	14 x 13 inches	Black	1



HealthSmart® Vivi Relax-a-Bac™ Support Cushion with Strap

- ✦ Modern dual-tone style beautifully complements and enhances most home decors and car interiors.
- ✦ Orthopedic, contoured design hugs your back, helping keep your spine in proper alignment; the removable solid board insert offers even more advanced support.
- ✦ Ultra high density foam keeps its shape; adjustable elastic strap with buckle anchors the cushion in place and prevents it from moving or slipping.
- ✦ Zippered cover is machine washable, making clean-up a snap.

ITEM #	SIZE	COLOR	QTY
555-7303-0200	14 x 13 inches	Black with Tan Stripe	1



DMI® Extra-Tall Support Cushion with Strap and Lumbar Pad

ITEM # 555-8073-0355

- ✦ Unlike most lumbar cushions that offer standard support, this unique cushion comes equipped with a removable and adjustable 9 inch lumbar pad that provides extra comfort for your chair. An added bonus.
- ✦ This cushion helps to alleviate back pain and improve your posture while sitting. Ideal for those who have to sit for extended periods.
- ✦ The elastic strap holds this cushion firmly in place so you don't have to worry about it sliding in your chair.
- ✦ This stylish cushion measures 14 x 21 inches.
- ✦ The removable polyester/cotton cover is machine washable.

Pressure Management

Bed Wedges



DMI® Orthopedic Foam Bed Wedge Pillows

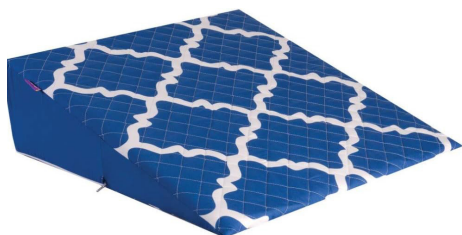
- ✦ This foam bed wedge pillow has a comfortable, gradual slope that eases body aches and pains. Helps relieve respiratory problems, acid reflux, neck and shoulder pain, back pain and to minimize snoring.



ITEM #	SIZE	COLOR	QTY
802-8026-1900	24 x 24 x 7 inches	White	1
802-8026-0100	24 x 24 x 7 inches	Blue	1
802-8027-0100	24 x 24 x 10 inches	Blue	1
802-8027-1900	24 x 24 x 10 inches	White	1
802-8028-0100	24 x 24 x 12 inches	Blue	1
802-8028-1900	24 x 24 x 12 inches	White	1

HealthSmart® Premium Foam Bed Wedge

- ✦ Gradual slope helps relieve symptoms of acid reflux, respiratory problems, neck and shoulder pain, sinus issues while sleeping and more.
- ✦ Hypoallergenic, removable, machine-washable cover.



ITEM #	SIZE	COLOR	QTY
555-8038-2400	24 x 24 x 12 inches	Blue Moroccan	1

HealthSmart® Premium Bed Wedge Cover

- ✦ Ultimate spill, rip and tear protection. Treated with Nanotex, a revolutionary fabric enhancement designed to allow liquids to roll off rather than soak in, extending the life of the bed wedge.
- ✦ The 100% polyester material is reinforced with quadruple stitched seams that help prevent rips and tears.



ITEM #	SIZE	COLOR	QTY
555-9036-2400	24 x 24 x 7 inches	Blue Moroccan	1
555-9038-2400	24 x 24 x 12 inches	Blue Moroccan	1
555-9038-0300	24 x 24 x 12 inches	Gray Links	1

DMI® Ortho Bed Wedges

- ✦ The leg wedge pillow is helpful for those suffering from back pain, knee pain, varicose veins, phlebitis or restless legs and those recovering from surgery.
- ✦ Supportive foam keeps its shape.
- ✦ Removable, zippered, polyester/cotton cover is machine washable.



ITEM #	SIZE	COLOR	QTY
555-8071-0122	24 x 20 x 6 inches	Blue	1
555-8071-0123	24 x 20 x 8 inches	Blue	1
555-8071-0124	24 x 20 x 10 inches	Blue	1

Pressure Management

Pillows & Cushions



DMI® Hypoallergenic Side Sleeper Pillow

- ✦ The Therapeutic design of this side sleeper pillow for neck and back pain promotes healthy alignment of back, neck and head for a restful night's sleep. Unique ear pocket in this orthopedic side sleeper pillow provides maximum comfort.
- ✦ Ergonomic cooling ear pocket design allows you to calmly side sleep without friction
- ✦ Contouring and supportive fiberfill helps you sleep through the night.
- ✦ Machine washable cover is easy to clean, cooling, cotton blend case prevents allergies dust mites & germs

ITEM #	DESCRIPTION	QTY
554-7916-1900	Pillow	1
554-7916-2000	Pillow Case	1



DMI® Hugg-A-Pillow Hypoallergenic Bed Pillow

ITEM # 554-7915-1900

- ✦ Orthopedic neck pillow provides comfort and supports posture by promoting alignment of the head, neck, and shoulders to reduce strain and pressure on the upper body
- ✦ L-shaped pillow molds to the body contours and holds its shape, making it ideal for all sleep positions. Especially ideal for side and stomach sleepers that prefer to hug a pillow or blanket at night
- ✦ SPECS: 24" x 24" with machine washable cover made of poly cotton.



DMI® Hypoallergenic Pillow

ITEM # 554-7910-1900

- ✦ Made of luxurious fabric designed to filter out particles such as lint and dust for a better night's rest and to breathe easier.
- ✦ Size 20 x 26 inches



DMI® Hypoallergenic Pillow Protector

- ✦ Made from 100% high-quality hypoallergenic material; durable for years of use.
- ✦ Fits standard-size pillows; 20" x 26"

ITEM #	DESCRIPTION	QTY
554-8041-1900	Plastic, Vinyl	1
554-8042-1900	Plasticized Polyester	1
554-8541-1902	Polyester	2

Pressure Management - Pillows & Cushions



DMI® CPAP Memory Foam Sleep Aid Pillow

ITEM # 556-1001-1900

- ✦ Designed for CPAP users. Built-in hose tether. Contoured cutouts reduce hose and mask interference.
- ✦ 3 layers of foam. Memory foam that gently molds to mask and face. High-rebound foam provides alignment. And Charcoal infused foam neutralizes odors.
- ✦ Orthopedic design promotes proper cervical alignment. Ideal for back, side, or stomach sleepers.
- ✦ Dual-sided comfort with breathable mesh and soft microfiber.
- ✦ Pillow size: 19.6" x 12.6" with 4 adjustable heights from 3" to 5.25" of comfort.



DMI® CPAP Fiber Filled Sleep Aid Pillow

ITEM # 556-1002-1900

- ✦ Designed for CPAP users. Contoured cutouts reduce hose and mask interference.
- ✦ Orthopedic design promotes proper cervical alignment. Ideal for back, side, or stomach sleepers.
- ✦ Pillow size: 23" x 17" x 5.25". Polyester fiber filling.



DMI® Hypoallergenic Contour Rest Pillow

ITEM # 554-8009-1900

- ✦ The unique hourglass design supports your head and neck, helping reduce the chance of neck pain.
- ✦ Medium support pillow is firm enough to support you but not too firm to create discomfort. The pillow's wings comfort your face when you sleep on your side.
- ✦ Cervical pillow design provides ergonomic support for side and back sleeping, as well as dual use to be used as a leg separator or knee pillow.
- ✦ Product Specs: Pillow is made out of polyester fiberfill that holds it's shape and comes with a removable, machine-washable polyester pillow cover. Size: 24" x 18"



DMI® Contour Memory Foam Pillow

ITEM # 554-8011-4300

- ✦ The unique ribbed surface promotes better air circulation, reduces heat retention and adds an extra layer of comfort to your pillow.
- ✦ Size: 19 x 12 x 3 – 4.5 inches

Pressure Management

Pillows & Cushions



DMI® Memory Foam Knee Pillow

ITEM # 555-7985-1900

- + Wedge pillow for Sciatica, back and hip pain relief at night by reducing pressure on the lower back while improving blood circulation. Ergonomically designed knee pillow fits comfortably between knees and provides maximum support and comfort
- + Memory foam is made with quality durable cut foam to provide long lasting comfort by not flattening over time
- + 10" x 8" x 6" with machine washable cover.



DMI® Hypoallergenic Neck Roll Support Pillow

ITEM # 554-8024-1000

- + This hypoallergenic polyester fiberfill pillow provides excellent head and neck support; it can also be used under the knees to elevate the legs at night.
- + 7" diameter. 18" long.



DMI® Foam Roll Pillow for Home and Travel

- + Made from highly resilient polyurethane foam that comfortably cushions your body as you sit or lay. Great for neck, back and under your knees, making this roll extremely versatile. Provides excellent lumbar and cervical support.
- + 19 x 3.5 inches in soft, but sturdy foam. Pillow will not lose shape and helps maintain proper neck and spine alignment.
- + Removable polyester/cotton cover is machine washable.

ITEM #	SIZE	QTY
554-8000-0121	3.5 x 19 inches	1
554-8000-0122	5 x 19 inches	1



DMI® Lumbar Roll Back Support Cushion Pillow

- + Foam lumbar roll makes chairs more comfortable and gives your back excellent support.
- + Elastic strap holds the cushion firmly in place.
- + Machine washable

ITEM #	DESCRIPTION	QTY
555-7912-2400	10.75 x 4.75 inches	1
555-7914-2400	10.75 x 2.5 inches	1

Pressure Management

Arm & Leg Support



DMI® Elevating Leg Rest Cushion

- ✦ Offers effective positional body support with a 30° angle by assisting different parts of the body. Placing a pillow under your knees can offload the spine; placing it behind the back provides lumbar support
- ✦ Perfect for back sleepers to support knees, ankles, feet or neck to reduce pain and improve alignment. Can be used between legs, under lower back, under knees, as a back support or as a bed spacer to prevent rolling.
- ✦ Measures 17" x 10" x 7". The removable cover is machine washable.
- ✦ Helps to improve blood flow and reduces varicose veins by placing it under the ankles for elevation. Can be used during pregnancy and postpartum recovery and is ideal for side sleepers.

ITEM #	SIZE	QTY
555-8080-0121	17 x 10 x 7 inches	1
555-8080-0123	28 x 10 x 7 inches	1



DMI® Heel Protector Pillows

ITEM # 555-8088-0100

- ✦ These soothing heel pillows protect against and heal skin ulcers and pressure sores.
- ✦ Heel protectors help absorb impact and force with durable but comfortable support while still allowing the foot to breathe freely.
- ✦ Adjustable straps that can slip on and off with hook and loop closures for a comfortable and secure fit.
- ✦ Universal one size fits most and are machine washable for easy cleanup.
- ✦ Set of 2, measure 9 x 9 inches, and can adjust in width from 3 to 9 inches. Soft polyester and fiberfill extend up over the ankle for added support and stability.



DMI® Foot Elevator Foam Leg Rest Cushion

ITEM # 555-8072-0121

- ✦ Supportive leg elevation pillow for leg injuries, foot injuries, foot surgery, leg surgery, foot sores, improving circulation, and more.
- ✦ Relieves pressure on your foot and ankle while elevating your leg to promote circulation.
- ✦ Made of comfortable polyurethane foam and includes soft flannel type cover that is machine washable
- ✦ Adjustable hook and loop strap is easy to use and ensures your leg elevation pillow stays in place; Size 12 x 12 x 4 inches.

Pressure Management - Arm & Leg Support



Heelbo® Heel and Elbow Protectors

- + Soft elastic protectors help reduce shear and friction on sensitive heels and elbows
- + Flexible stretch weave allows skin to breathe and retains shape after repeated use
- + Sewn-in contoured foam pad eliminates rolling and binding
- + Color coded fabric for quick size identification. Machine washable.

ITEM #	COLOR	SIZE	QTY
12037	Yellow	Small, Up to 16"	12pr/box
12038	Blue	Medium, Up to 17"	12pr/box
12039	White	Large, Up to 19"	12pr/box
12040	Green	X-Large, Up to 23"	12pr/box
12041	Beige	XX-Large, Up to 25"	12pr/box



Heelbo® Premium Heel and Elbow Protectors

- + Soft elastic protectors help reduce shear and friction on sensitive heels and elbows.
- + Flexible stretch weave allows skin to breathe and retains shape after repeated use.
- + Removable polymer insert pad offers superior protection. The unique viscoelastic polymer pad reduces pressure by up to 38%.
- + Machine washable.

ITEM #	SIZE	COLOR	QTY
12061	Large, Up to 19"	White	6 pair/box



Heelbo® Plantar Fasciitis Night Splint w/ Massage Roller

ITEM # 630-7000-0002

- + All-Night Comfort: Adjustable straps & breathable materials for a snug yet gentle fit.
- + Effective Pain Relief: Helps gently stretch your plantar fascia and Achilles tendon.
- + Customizable Support: Designed to suit various foot sizes and arch types. Fits men's shoe sizes 4 -12 and women's 5.5 -13.5
- + Universal Design: Fits both left and right feet.

*BONUS: Includes massage roller & stretching guide.



DMI® Adjustable Heel and Elbow Protectors

ITEM # 555-8070-1900

- + Adjustable hook and loop straps for a custom fit
- + Soft 100% polyester fabric is hand washable
- + 1 size fits most
- + 1 pair included

Pressure Management

Compression Sleeves



Heelbo® - Ankle Copper Compression Sleeve

- ✦ Copper infused compression threads aid in reducing inflammation, sustaining connective tissues and aiding in blood and oxygen flow.
- ✦ Stays in place with a nonslip silicone band while providing mobility of the joint.
- ✦ Breathable odor reducing fabric helps wick away moisture for all day comfort.
- ✦ Mild compression delivers a controlled amount of pressure reducing pain and discomfort.

ITEM #	SIZE	QTY
630-6559-0122	Medium (6.76"-8")	1
630-6559-0123	Large (7.5"-9")	1
630-6559-0124	Extra Large (8.5"-10")	1



Heelbo® - Knee Copper Compression Sleeve

ITEM #	SIZE	QTY
630-6560-0121	Small (13.5"-14.5")	1
630-6560-0122	Medium (15"-16")	1
630-6560-0123	Large (16.5"-18.5")	1
630-6560-0124	Extra Large (19"-20.5")	1



Heelbo® - Elbow Copper Compression Sleeve

ITEM #	SIZE	QTY
633-6558-0122	Medium (10.5"-11.5")	1
633-6558-0123	Large (12"-13.5")	1
633-6558-0124	Extra Large (14"-15.5")	1



Heelbo® - Calf Copper Compression Sleeve

ITEM #	SIZE	QTY
660-6557-0121	Small (10"-14")	1
660-6557-0122	Medium (13"-16")	1
660-6557-0123	Large (15"-18")	1
660-6557-0124	Extra Large (17"-21")	1

Pressure Management

Compression Socks



Heelbo® - Compression Stockings 15-20mmHg

- ✦ Long compression socks can assist with better blood flow during activity to help get oxygen to the muscles and to support tissue for faster movement and quicker reactions with less energy. They also help with quicker recovery, soreness and cramping.
- ✦ 15-20mmHG is ideal for minor to moderate swelling, developing DVT while sitting for long periods of time, traveling or pregnancy. Necessity for sitting or standing long hours, athletics and fitness.

ITEM #	SIZE	COLOR	QTY
630-6561-0000	Small	Beige	1
630-6561-0001	Medium	Beige	1
630-6561-0002	Large	Beige	1
630-6561-0003	X-Large	Beige	1
630-6561-0004	2X-Large	Beige	1
630-6561-0005	3X-Large	Beige	1
630-6561-0006	4X-Large	Beige	1



Heelbo® - Compression Stockings 15-20mmHg

- ✦ Long compression socks can assist with better blood flow during activity to help get oxygen to the muscles and to support tissue for faster movement and quicker reactions with less energy. They also help with quicker recovery, soreness and cramping.
- ✦ 15-20mmHG is ideal for minor to moderate swelling, developing DVT while sitting for long periods of time, traveling or pregnancy. Necessity for sitting or standing long hours, athletics and fitness.

ITEM #	SIZE	COLOR	QTY
630-6561-0010	Small	Black	1
630-6561-0011	Medium	Black	1
630-6561-0012	Large	Black	1
630-6561-0013	X-Large	Black	1
630-6561-0014	2X-Large	Black	1
630-6561-0015	3X-Large	Black	1
630-6561-0016	4X-Large	Black	1

Pressure Management - Compression Socks



Heelbo® - Diabetic Crew Socks 8-15mmHg

- ✦ Diabetic socks are recommended for circulatory problems, diabetes, edema and neuropathy. They feature graduated compression where the compression is strongest at the ankle and gets lighter up the leg.
- ✦ Extra padded soles and cushioned foot help prevent foot injuries in the toe, foot and heel. Knit in, reinforced heel pocket provides added durability and easy stocking orientation on the foot and leg for a proper fit.
- ✦ Specs: Includes 1 pair of socks, crew fit, machine washable

ITEM #	SIZE	COLOR	QTY
630-6562-0000	Small	Black	1
630-6562-0001	Medium	Black	1
630-6562-0002	Large	Black	1
630-6562-0003	Extra Large	Black	1



Heelbo® - Diabetic Crew Socks 8-15mmHg

- ✦ Diabetic socks are recommended for circulatory problems, diabetes, edema and neuropathy. They feature graduated compression where the compression is strongest at the ankle and gets lighter up the leg.
- ✦ Extra padded soles and cushioned foot help prevent foot injuries in the toe, foot and heel. Knit in, reinforced heel pocket provides added durability and easy stocking orientation on the foot and leg for a proper fit.
- ✦ Specs: Includes 1 pair of socks, crew fit, machine washable

ITEM #	SIZE	COLOR	QTY
630-6562-0010	Small	White	1
630-6562-0011	Medium	White	1
630-6562-0012	Large	White	1
630-6562-0013	Extra Large	White	1



Heelbo® - Compression Dress Socks 8-15mmHg

- ✦ Circulation socks help improve blood flow and can lessen pain and swelling in the legs while lowering chances of deep vein thrombosis, blood clots or other circulation problems by allowing the legs and ankles to feel less tired and achy.
- ✦ 8-15mmHG is ideal for leg fatigue and slight ankle, leg and foot swelling and offer ideal use for sitting or standing for extended periods.
- ✦ Specs: Includes 1 pair of socks made of rib knit fabric, machine washable.

ITEM #	SIZE	COLOR	QTY
630-6563-0000	Small	Black	1
630-6563-0001	Medium	Black	1
630-6563-0002	Large	Black	1

Mobility

Walkers



DMI® Lightweight Aluminum Folding Walker with Single Release

ITEM # 802-1017-0645

- ✦ Crafted from anodized aluminum which makes it strong enough to support 250 pounds, but also lightweight and easy to carry. It only weighs 7 pounds!
- ✦ Folds down to only a 4 1/2 inch width for storage.
- ✦ The walker is adjustable from 32 to 38 inches in one inch increments.
- ✦ 5 inch front wheels glide across the floor. Slip resistant rubber tips give you a firmer grip on the floor or pavement; contains latex.



DMI® Two-Button Release Folding Walker

ITEM # 500-1045-1200

- ✦ 5" front non-swivel wheels
- ✦ Folds to 4" width easily for storage or lateral access
- ✦ Constructed of lightweight 1" anodized aluminum tubing. Steel crossbrace for additional rigidity. Molded soft foam handgrips.
- ✦ Distance between handles: 17". Adjustable height: 32"– 38". Overall width: 25". Weight: 5.5 lbs. Weight capacity: 250 lbs.

ITEM #	WHEELS	OVERALL WIDTH	QTY
500-1045-1200	with 5" wheels	25"	1
500-1044-0200	w/out wheels	23"	1



DMI® Folding Hemi Side Style Walkers

ITEM # 500-1306-0600

- ✦ An excellent choice for those want more stability and support than a cane, but something lighter than a walker.
- ✦ Made of strong aluminum able to support up to 300 pounds yet it's lightweight.
- ✦ Slip resistant rubber tips give you good traction; contains latex
- ✦ Height adjusts from 30 to 43 inches; easily folds with one hand



DMI® Folding Adjustable Aluminum Crutches

ITEM # 502-1436-0000

- ✦ Crutches for adults that accommodate users from 4'6" to 6'6" with easy push-button adjustment in 1" increments, perfect for youth, adults, and tall adults.
- ✦ 300 lb Weight Capacity - Aluminum construction provides reliable support up to 300 pounds while remaining lightweight for comfortable daily use.
- ✦ Features 3 adjustment settings for hand grips for optimal fit.
- ✦ Non-slip rubber crutch tips. Cushioned underarm pads and ergonomic hand grips reduce pressure points. Foldable crutches perfect for compact storage and transport.

Mobility

Rollators



HealthSmart® Gateway Aluminum Rollator Walker

- ✦ Rolling walker with padded seat and backrest folds easily for storage and transportation. No tools needed for easy assembly. Made of durable but lightweight aluminum that holds up to 300lbs.
- ✦ Increase mobility with 8" rubber wheels in front and 7" in rear with bicycle style loop-lock handbrakes. Includes attachable storage bag and convenient cane holder.
- ✦ Adjustable handle: 31" to 36"; Folded dimensions: 25" x 16.5" x 11.25"

ITEM #	COLOR	WEIGHT CAP.	WEIGHT	QTY
501-5012-0200	Black	300 lbs	17 lbs	1
501-5012-1110	Purple	300 lbs	17 lbs	1
501-5012-4100	Titanium	300 lbs	17 lbs	1



DMI® Lightweight Extra-Wide Heavy-Duty Aluminum Rollator

- ✦ Large 8" wheels and bicycle style loop-lock handbrakes. Adjustable handle height from 34" - 38"
- ✦ Extra-wide rollator walker with removable storage basket improves balance, stability, and convenience.
- ✦ Made of strong, lightweight aluminum, making it sturdy for up to 375lbs. Easy to lift and maneuver at only 21lbs. Rollator width: 29.5"; width between the handles: 22".

ITEM #	COLOR	WEIGHT CAP.	WEIGHT	QTY
501-1029-0700	Burgundy	375 lbs	19.5 lbs	1
501-1029-4100	Titanium	375 lbs	19.5 lbs	1



Ultra Lightweight Folding Aluminum Rollator Walker

- ✦ Its front wheels turn easily in any direction, giving you great maneuverability.
- ✦ Convenient 2-position storage basket that hooks below or behind the seat.
- ✦ The rollator folds easily with a simple pull on the strap under the seat, great for traveling.
- ✦ The cushioned flip up seat with padded backrest gives you a comfortable place to rest. Adjustable handle height: 33.75" to 38" in one inch increments
- ✦ Wire basket size: 16" x 8.75" x 5.75"; Overall size: 23" x 24" x 30.5". Weight capacity: 300lbs.

ITEM #	COLOR	WEIGHT CAP.	WEIGHT	QTY
501-1012-0700	Burgundy	300 lbs	15 lbs	1
501-1012-2100HS	Royal Blue	300 lbs	15 lbs	1

Mobility - Rollators



DMI® Ultra Lightweight Hemi Aluminum Rollator

- ✦ The comfortable padded seat with backrest is over 20% lower in height than most rollators, only 17" high, which is ideal if you are shorter or looking for something lower to the ground.
- ✦ The cushioned flip up seat with padded backrest gives you a comfortable place to rest. Adjustable handle height: 31.5" to 34.5" in one inch increments.
- ✦ Wire basket size: 16.5" x 10.5" x 4.75"

ITEM #	COLOR	WEIGHT CAP.	WEIGHT	QTY
501-3012-4100	Titanium	300 lbs	15 lbs	1



DMI® Extra-Wide Heavy Duty Steel Bariatric Rollator Walker

- ✦ Adjust the height of the handles to meet your personal needs. Adjustable handle height: 30.75" to 34.75". Maneuvers smoothly over floors and surfaces. Folds conveniently for easy storage and transport. Easy to assemble.
- ✦ Equipped with convenient bicycle-style hand brakes to help you ease to a complete stop as you walk. Locking mechanism keeps your rollator firmly in place when not in use.
- ✦ Wire basket size: 20" x 8.5" x 6".

ITEM #	COLOR	WEIGHT CAP.	WEIGHT	QTY
501-1032-0700	Burgundy	375 lbs	25.2 lbs	1



DMI® Traditional Steel Rollator Walker with Padded Seat

ITEM # 501-1013-0100

- ✦ Dual push to lock rear wheel brakes; Removable height adjustable footrests.
- ✦ Size: 22.5" x 38" x 39"; folded size: 11.25" x 16" x 39".
- ✦ Adjustable handle height: 31" to 38". Seat height: 24"; seat size: 15" x 8.5".
- ✦ Wire basket size: 16" x 12" x 7".

ITEM #	COLOR	WEIGHT CAP.	WEIGHT	QTY
501-1013-0100	Blue	250 lbs	28 lbs	1



DMI® 3-Wheel Folding Aluminum Rollator Walker

ITEM # 802-2014-2100

- ✦ Folding rollator walker with swiveling front wheel for maximum maneuverability and stability. Easily fits into vehicles when folded.
- ✦ Aluminum lightweight and compact design makes your walker easy to operate at only 15lbs, and holds up to 220lbs. Includes bicycle style loop-lock handbrakes.
- ✦ Detachable storage tray, bag and basket are great for storing items.

Mobility

Walker Accessories



DMI® Walker Wheels with Glide Cap Kits

- ✦ Color coordinating kit matches 500-1044 series and 500-1045 series walkers
- ✦ Includes: 2 non-swivel 5" durable nylon wheels and 2 plastic glide caps
- ✦ Height adjustable legs fit 1" inside diameter tubing

ITEM #	COLOR	QTY
510-1005-0945	Pink	1



HealthSmart® Walker Coaster Glides

- ✦ Bright easy-to-see color helps you see where you're going
- ✦ They fit 1-inch diameter walker legs. They are washable, too
- ✦ Two walker coasters per package

ITEM #	SIZE	QTY
510-1032-0000	1"	1 pair
510-1032-0004	1"	2 pair



DMI® Walker Ski Glide Attachments

- ✦ Eliminates the need to lift the walker; should be used in conjunction with walker balls or wheels on the front legs
- ✦ High-density plastic
- ✦ 1 pair included

ITEM #	SIZE	QTY
510-1030-0000	1"	1 pair
510-1031-0000	1" and 7/8"	1 pair



DMI® Walkerballs

- ✦ Make your life easier with pre-cut Walkerballs; no need to cut tennis balls
- ✦ Protect your floors from scuff marks
- ✦ Glide easily across most surfaces
- ✦ Each package contains 2 Walkerballs

ITEM #	COLOR	QTY
510-1035-0300	Gray	1
510-1035-0800	Red	1
510-1035-2000	Purple	1
510-1035-9907	Patriotic	1

HealthSmart® Universal Walker Basket

ITEM # 510-1085-1900



- ✦ Provides convenience to carry small items such as a purse, cellphone, medicine, glasses, wallet or food. Lightweight and easy to install and the included plastic insert prohibits small items from falling out
- ✦ Includes a molded cup holder to keep drinks secure without spilling.
- ✦ Securely mounts to any walker or rollator with adjustable hook and loop straps at the front of the walker. The white vinyl coating resists rust. Measures 16" x 5.5" x 7".



DMI® Adjustable Walker Platform Attachment

ITEM # 510-1008-0000

- ✦ Provides a secure platform and support for walkers using your forearm and shoulder rather than grip strength. Allows you to control your walker using one arm.
- ✦ Side-opening and adjustable padded cuff provides a nice comfortable armrest that helps you move more smoothly with your walker.
- ✦ Made of lightweight aluminum that won't weigh you down as you move.
- ✦ Handle platform can be rotated forward and backwards. The grip handle can be adjusted side-to-side

DMI® Universal Walker Pouch - Multiple Compartments

ITEM # 510-1068-2400



- ✦ Four storage pockets (three small and one large) allow you to carry multiple items
- ✦ Security straps prevent the bag from swinging
- ✦ Pouch is easily removable and machine washable; size 9.5 x 13 inches

DMI® Universal Walker Pouch One Compartment

ITEM # 510-1069-2400



- ✦ One large compartment gives you ample room for a variety of items
- ✦ Durable navy denim fabric; made in USA; machine washable
- ✦ Size: 12 1/2 x 15 inches with 9 3/4 inch pocket

DMI® Walker Tray, Gray

ITEM # 510-1083-0300



- ✦ Slides over the handles of your walker and holds meals, crafts, books, personal items and more. Raised edges and 2 recessed cup holders prevent spills.
- ✦ This walker tray will fit walkers measuring approximately 16 to 19 inches from handle to handle and with handles that are no longer than 11 1/2 inches in length and 1 1/2 inches wide.

DMI® Folding Walker Tray with Cup Holders

ITEM # 510-1084-0300



- ✦ Textured tray surface and raised outer edge help prevent items from moving. Two different size cup holders allow you to carry coffee, water, soft drinks and more.
- ✦ Tray mounts with adjustable clips that snap on most walkers; no tools required.

Mobility

Canes



DMI® Adjustable Aluminum Canes

- ✦ Designed for maximum safety. This cane features a metal reinforced, slip-resistant rubber tip that stands firmly on many floors and surfaces to give you added support.
- ✦ Always a perfect fit. With the easy-to-use snap adjustment button, this cane meets all of your personal needs regardless of your height.

ITEM #	DESCRIPTION	COLOR	QTY
502-1300-5455	Soft Foam Offset Hand Grip	Bronze	1
502-1304-0255	Soft Foam Offset Hand Grip	Black	1
502-1309-0255	Standard Foam Padded Grip	Black	1
502-1300-8891	Designer Cane w/ Offset Foam Handle	Zebra	1
502-1300-8892	Designer Cane w/ Offset Foam Handle	Leopard	1
502-1300-9903	Designer Cane w/ Offset Foam Handle	Tiny Flowers	1
502-1300-9904	Designer Cane w/ Offset Foam Handle	Purple Flowers	1
502-1300-9905	Designer Cane w/ Offset Foam Handle	Spotted	1
502-1300-9914	Designer Cane w/ Offset Foam Handle	Copper Swirl	1
502-1305-0600	Vinyl Offset Hand Grip	Silver	1



HealthSmart® Folding Walking Sticks

- ✦ Adjustable folding walking stick folds in four places and adjusts from 33 to 37 inches to your height, eliminating uncomfortable bending or awkward slouching.
- ✦ Slip resistant and sturdy collapsible walking stick supports up to 250 pounds with a slip resistant rubber tip, giving you extra traction helping to maintain your balance.

ITEM #	COLOR	STYLE	QTY
502-1313-1110	Lavender	Comfort grip	1
502-1316-0200HS	Black	Ergonomic	1
502-1316-5400HS	Bronze	Ergonomic	1



DMI® Folding Walking Sticks

- ✦ Folds compactly into 4 sections for easy storage or travel. Storage sleeve is included to keep cane tightly folded.
- ✦ Derby grip handle is made of sleek and stylish smooth wood.
- ✦ Adjust from 33"-37" in 1" increments. When the cane is folded it measures 11.5 x 3.5.
- ✦ Made of strong and durable anodized aluminum making it lightweight to carry at 9.6 ounces but supporting up to 250 pounds. The cane tip is 3/4" in diameter.

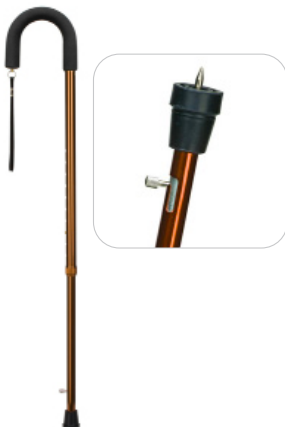
ITEM #	COLOR	QTY
502-1325-0100	Blue Cyclone	1
502-1325-9906	Floral	1
502-1325-9913	Blue Ice	1



DMI® Wood Derby-Top Lightweight Adjustable Canes

- ✦ Adjustable height from 31 to 40 inches means most people will find a good fit
- ✦ Smooth wood derby top handle feels good in your hand. Slip resistant rubber tips help you gain more traction on slippery surfaces
- ✦ Made of lightweight aluminum yet supports up to 250 pounds

ITEM #	COLOR	Copper Swirl	QTY
502-1351-9909	Floral	1	1
502-1351-9913	Green Ice	1	
502-1351-9914	Blue Ice	1	



DMI® Lightweight Adjustable Cane with Retractable Ice Tip

ITEM # 502-1315-5400

- ✦ Retractable metal ice tip helps you feel safer and walk more securely on ice and snow.
- ✦ The cane is crafted from anodized aluminum which makes it strong enough to support 250lbs, yet lightweight and easy to carry.
- ✦ Padded foam grip handle; convenient strap makes it easy to hang or wrap around your wrist for extra security. Slip resistant rubber tips give you more traction; contains latex.
- ✦ The cane is adjustable from 30" to 39". Locking ring keeps the height locked in place.

Mobility - Canes



DMI® Adjustable Quad Canes

- ✦ Slip resistant rubber feet give you more traction on wet surfaces.
- ✦ Easily adjust the height from 29 to 38 inches; handle is reversible for right or left hand use.
- ✦ ¾ inch aluminum shaft and black steel base
- ✦ Supports up to 250 pounds

ITEM #	BASE	COLOR	QTY
502-1333-0200	Small (6 x 8 inches)	Black	2/pack
502-1333-0600	Small (6 x 8 inches)	Silver	2/pack
502-1334-0200	Large (7 x 11 inches)	Black	2/pack



HealthSmart® Sit-to-Stand Adjustable Quad Cane

ITEM # 502-1510-0200

- ✦ Standing assistance from a seated position
- ✦ Quad-foot base for additional support and stability
- ✦ Soft foam grip handles and slip-resistant rubber tips
- ✦ Base measures: 6" x 8"
- ✦ Adjustable from 29"– 38" in 1" increments
- ✦ Weight capacity of 250 lbs.



DMI® RuggedStride™ Folding Cane with Self Standing Quad Base

ITEM # 502-1315-0255

- ✦ Premium Rubberized Grip
- ✦ Integrated Wrist Strap with ID Tag
- ✦ Fully Adjustable Height From 33" - 37"
- ✦ Folds Compactly To Only 11.5"
- ✦ Self Standing All Terrain Non-Slip Pivoting Quad Tip
- ✦ Heavy Duty Weight Capacity of 300 lbs



DMI® Men's Deluxe Traditional Wood Cane, Walnut

ITEM # 502-1354-6100

- ✦ The cane is crafted from quality wood then stained and sealed for a glossy finish that feels smooth in your hand
- ✦ Strong and sturdy yet lightweight to carry
- ✦ The cane is 36 inches long but you can have it cut for a customized length; 1 inch diameter
- ✦ The slip resistant rubber tips add to safety; a reinforced metal insert increases durability

Mobility - Canes



Switch Sticks® Folding Walking Sticks

- + Includes a coordinating wood handle, wrist strap, hook and loop band and rubber tip to create a polished look
- + Folds down into four sections for easy storage and travel
- + Height adjusts from 32" to 37". Weight capacity: 264 lbs.

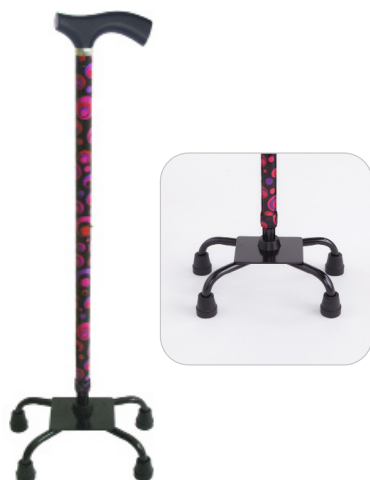
Pattern

ITEM #	COLOR	QTY	ITEM #	COLOR	QTY
502-2000-0000	Black	1	502-2000-5110	Maple	1
502-2000-0002	Gold	1	502-2000-5111	Waves	1
502-2000-5100	Bubbles	1	502-2000-5115	Viking	1
502-2000-5102	Circles	1	502-2000-5126	Kiki	1
502-2000-5103	Hot Pink	1	502-2000-5128	Mimi	1
502-2000-5105	Huntington	1	502-2000-5129	Berlin	1
502-2000-5107	Poppies	1	502-2000-5132	Tango	1
502-2000-5108	Storm	1	502-2000-5134	Vienna	1



Engraved

ITEM #	COLOR	QTY
502-2000-5200	Engraved Azure	1
502-2000-5201	Engraved Soiree	1
502-2000-5202	Engraved Pearl Gold	1
502-2000-5205	Engraved Graphite	1
502-2000-5206	Engraved Rose Gold	1
502-2000-5207	Engraved Cognac	1



Switch Sticks® Quad Sticks

- + This pretty, colorful quad cane can be used in either hand and gives you greater stability than a single-point cane.
- + Made from lightweight aluminum, it can support up to 264 pounds.
- + The height is adjustable from 26 to 37 inches in 1 inch increments.

ITEM #	COLOR	QTY
502-2001-5102	Circles	1
502-2001-5105	Huntington	1



Switch Sticks® Seat Cane

- + Versatile 2-in-1 walking stick and seat give you the support of a walking cane combined with a seat for resting.
- + Great for outdoor events, waiting in lines, traveling or resting after walking or shopping.
- + Folds for easy storage and portability; lightweight aluminum supports up to 220 pounds.

ITEM #	COLOR	QTY
502-2002-5100	Bubbles	1
502-2002-5104	Kensington	1
502-2002-5108	Storm	1

Mobility

Cane Accessories



Brazos® Engraved Style Stick

- ✦ Premium construction. The solid wood handle is paired with a complementing durable metal shaft.
- ✦ The precision engraved aluminum shaft coupled with an artisan hand crafted handle provides a sleek, stylish, and fashionable look for any occasion.
- ✦ Adjustable height from 30 inches to 39 inches to fit various heights for a more customized fit. Slip resistant tip.
- ✦ Includes a matching secure nylon wrist strap.

ITEM #	SIZE	QTY
605-2000-5201	Black	1
605-2000-5202	Gold	1

DMI® Cane Foam Handgrip Replacement

ITEM # 512-1303-0200



- ✦ A great replacement for worn cane hand grips or if you want a newer hand grip with thick, cushioning foam.
- ✦ Black foam is durable and long lasting.
- ✦ Fits most canes; Size: 4 ½ x 1 ¼ inches.

DMI® Walker Replacement Tips



- ✦ Rubber tips provide added stability to walkers, canes and commodes.
- ✦ Slip-resistant and long-lasting.
- ✦ Fits over the end of most leg or cane tubing.

ITEM #	SIZE	QTY
519-1373-9504	1 inch	4/box
519-1378-9504	1/2 Inch	4/box
519-1383-9502	3/4 Inch	4/box

DMI® 5 Prong Ice Grip Attachment for Canes or Crutches

ITEM # 512-1368-0600



- ✦ This 5-prong ice attachment fits over your cane's rubber tip and bites into ice to improve stability.
- ✦ Can be clamped on during winter storms and removed easily.
- ✦ Easy flip-up design means you can keep it on indoors too.

DMI® Crutch Accessory Kits

ITEM # 512-1430-0000



- ✦ These versatile crutch accessories easily fit on most aluminum or wood crutches.
- ✦ Includes: 1 pair of foam underarm pads, 1 pair of hand grip covers and 1 pair of #50 large slip-resistant rubber tips.



Habitat® Universal Portable Tray

ITEM # 511-1000-0000

- ✦ 3 divided compartments keep drinks and snacks separated.
- ✦ An insulated cup holder helps keep beverages colder for longer.
- ✦ Features a high-quality supportive frame that keeps it shape while on the move.
- ✦ Easy installation with 4 non-slip straps with hook and loop closures help keep the tray in place and avoids tilting.
- ✦ Durable washable fabric can easily be spot cleaned.



Habitat® Universal Cup Holder & Phone Holder

ITEM # 511-1000-0100

- ✦ This universal cup holder with phone holder is easily attaches to most baby strollers, walkers, wheelchairs, rollators, bikes, scooters, shopping carts, and much more!
- ✦ Features a large cup holder with anti-slip tabs to help accommodate large cups or mugs up to 32 oz.
- ✦ Slits on the side of the cup holder allow for large cups or mugs with extra long handles to easily fit.
- ✦ This 2-in-1 cup holder also features a removeable phone holder to keep your phone within reach.
- ✦ The universal cup holder easily attaches with a secure clamp the features a rubber insert to help keep the holder from tilting.
- ✦ Keep your drink upright at any angle with the adjustable rotation knob. This drink holder can rotate 360° ensuring you don't spill a drop.



HealthSmart® Vivi Bridgit Cane Rest Cane Holder

- ✦ Cane holder allows you to keep your cane in a convenient place when you are not using it.
- ✦ Fit diameters 5/8" to 1".

ITEM #	COLOR	QTY
512-2002-0009	Orange	1
512-2002-0010	Yellow	1
512-2002-1120	Red	1

Mobility

Wheelchair



DMI® Standard Wheelchair



- ✦ Easy to use push-to-lock brakes securely keep your wheelchair in place – one less thing to worry about.
- ✦ An excellent wheelchair to have around the house and when you are out and about.

ITEM #	SIZE	QTY
503-0658-0200	Fixed Armrest	1
503-0664-0200	Removable Armrest	1

DMI® Wheelchair Trays

ITEM # 505-4016-0400



- ✦ Convenient tray with a contoured semi-circle cutout makes it easier to carry things from room to room
- ✦ Great for eating, reading, writing and crafts. Top is easy to clean.
- ✦ Specs: 23" x 19"

DMI® Wheelchair Backpack

ITEM # 517-1072-0200



- ✦ Provides convenient hands-free storage on the back of wheelchairs
- ✦ Large 14 x 19 inch storage compartment with hook and loop closure is roomy enough to carry multiple items like purses, glasses, phones, water bottles, groceries, medical supplies, etc.
- ✦ Attaches easily with slip-on straps

DMI® Fleece Wheelchair Arm Pads with Storage

ITEM # 517-1076-9911



- ✦ They attach easily to wheelchair arms with a hook and loop closure
- ✦ Armrests are machine washable for added convenience
- ✦ Size 10 x 9 inches with 4 ½ inch pocket

DMI® Retractable Lightweight Portable Wheelchair Ramps

ITEM # 517-4094-0000



- ✦ Easily adjustable from 3 to 5 feet with push-button lock mechanism; see measuring instructions before ordering
- ✦ Each ramp can support up to 330 pounds for a total of 660 pounds between them
- ✦ Ramps are lightweight (6 pounds each) and portable in a convenient nylon storage bag; great for travel

DMI® Wheelchair Seat Belt Safety Strap

ITEM # 517-5013-0200



- ✦ Add more security to wheelchair or transport chair users by installing this safety strap seat belt on the chair
- ✦ Installs on most wheelchairs and transport chairs
- ✦ Sturdy metal buckle with push button release just like car seat belts
- ✦ Adjustable black 48-inch strap is strong and durable

Mobility

Transfer Aids



DMI® Deluxe Wood Transfer Boards

- ✦ Sealed and coated board allows easier transfers to/from bed, wheelchair, chair, car or commode
- ✦ An effective mobility aid for independent living
- ✦ Strong enough to support up to 440 pounds

ITEM #	DESCRIPTION	SIZE	WEIGHT CAPACITY	QTY
518-1753-0400	Solid	24 x 8 inch	440 lbs	1
518-1754-0400	Solid	30 x 8 inch	440 lbs	1
518-1759-0400	1 cut out handle	24 x 8 inch	440 lbs	1
518-1760-0400	1 cut out handle	30 x 8 inch	440 lbs	1
518-1765-0400	2 cut out handles	24 x 8 inch	440 lbs	1
518-1756-0400	2 cut out handles	30 x 8 inch	440 lbs	1
518-1800-0000	2 cut out handles	32 x 10 inch	735 lbs	1



DMI® Ambulation Gait Belt

- ✦ Helps provide safe transfers
- ✦ Adjustable for a custom fit
- ✦ Hand holds offer a variety of holding positions
- ✦ Snap-to-close buckle
- ✦ Made of heavy-duty 2" cotton webbing. Machine washable

ITEM #	COLOR	LENGTH	QTY
533-6027-0022	Cotton	50"	1
533-6027-0024	Cotton	65"	1

Stethoscopes



MABIS® Signature™ Series Stainless Steel Stethoscopes

- + Deluxe stainless steel chestpiece and a stainless steel dual inner-spring binaural
- + Color-coordinated non-chill ring and diaphragm retaining ring
- + Infant bell 7/8", diaphragm 1 1/4" 22" tubing
- + Includes: 2 extra sets of eartips (1 flexible, 1 hard plastic) in 2 sizes, and (1) extra diaphragm

ITEM #	COLOR	SIZE	LENGTH	QTY
10-404-020	Black	Adult	30"	1



MABIS® Legacy™ Series Sprague Rappaport Stethoscopes

- + Includes: (5) interchangeable chestpieces, (3) bells (adult, medium, and infant), and (2) diaphragms (small and large); plus 3 different sized eartips
- + Heavy-walled 22" vinyl tubing

ITEM #	COLOR	LENGTH	QTY
10-414-020	Black	30"	1
10-414-130	Yellow	30"	1



MABIS® Spectrum™ Series Dual Head Stethoscope

- + Includes: binaural, lightweight anodized aluminum chestpiece, 22" vinyl Y-tubing, spare diaphragm and a pair of mushroom eartips

ITEM #	COLOR	LENGTH	QTY
10-426-010	Blue	30"	1
10-426-020	Black	30"	1
10-426-200	Purple	30"	1

Stethoscopes



MABIS® Spectrum™ Series Nurse Stethoscope

- ✦ Includes: binaural, lightweight anodized aluminum chestpiece, 22" vinyl Y-tubing, spare diaphragm and a pair of mushroom eartips

ITEM #	COLOR	LENGTH	QTY
10-428-010	Blue	30"	1
10-428-020	Black	30"	1



MABIS® Teaching/Training Stethoscopes

- ✦ Perfect teaching stethoscope for new doctors, nurses, caregivers, biology students, pediatricians, EMT's, and more as two people can conveniently use the dual head stethoscope at the same time.
- ✦ Training stethoscope has 24" tubing making it convenient and comfortable for 2 people to use at the same time.
- ✦ Includes: 2 binaurals, 2 pieces of Y-tubing, a Y-connector and an extension tube.

ITEM #	COLOR	LENGTH	QTY
10-446-020	Black	36"	1

Sphygmomanometers



MABIS® Signature™ Series Aneroid Sphygmomanometer

- + Offers superior performance and unsurpassed quality
- + Heavy-duty vulcanized bladder and thick-walled inflation bulb
- + Includes: deluxe air release valve, inflation bulb, blue nylon calibrated cuff and deluxe zippered carrying case

ITEM #	SIZE	CUFF SIZE	QTY
01-100-011	Adult	11"– 16.4"	1
01-100-016	Large Adult	13"– 20"	1



MABIS® Legacy™ Series Aneroid Sphygmomanometer

- + High performance
- + Includes: deluxe air release valve, inflation bulb, black nylon calibrated cuff and zippered carrying case

ITEM #	SIZE	CUFF SIZE	QTY
01-110-021	Adult	11"– 16.4"	1
01-110-026	Large Adult	13"– 20"	1



MABIS® Caliber™ Series Aneroid Sphygmomanometer

- + High quality
- + Includes: deluxe air release valve, inflation bulb, blue nylon calibrated cuff and zippered carrying case

ITEM #	SIZE	CUFF SIZE	QTY
01-130-011	Adult	11"– 16.4"	1
01-130-016	Large Adult	13"– 20"	1
01-130-015	Child	7.7"– 11.3"	1

Sphygmomanometers



MABIS® Caliber™ Series Palm Aneroid Sphygmomanometer

- + Ambidextrous styling. Extra-large gauge face
- + Calibrated blue nylon cuff and deluxe air release valve
- + Zippered carrying case

ITEM #	SIZE	CUFF SIZE	QTY
01-155-011	Adult	11"–16.4"	1



MABIS® Caliber™ Aneroid Sphygmomanometer with Adjustable Gauge

- + Specially designed so the user can easily set the gauge to zero if needed
- + Insert a mini-screwdriver (included) into the stem of the gauge and turn the screwdriver until the needle returns to zero
- + Includes: deluxe air release valve, inflation bulb, blue nylon calibrated cuff and zippered carrying case

ITEM #	SIZE	CUFF SIZE	QTY
01-133-011	Adult	11"–16.4"	1
01-133-016	Large Adult	13"–20"	1



MABIS® Precision™ Series Aneroid Sphygmomanometer

- + Quality and affordable. Standard air release valve
- + Available in latex-free and latex
- + Includes: standard air release valve, inflation bulb, blue nylon calibrated cuff and zippered carrying case

ITEM #	LATEX ITEM #	SIZE	CUFF SIZE	QTY
09-141-016	01-140-016	Large Adult	13"–20"	1
09-141-011	01-140-011	Adult	11"–16.4"	1
N/A	01-140-015	Child	7.7"–11.3"	1
N/A	01-140-013	Infant	5.5"–7.8"	1
09-141-017	01-140-017	Thigh	16.1"–24.2"	1



MABIS® Economy™ Series Aneroid Sphygmomanometer

- + Most economically priced. Standard air release valve
- + Includes: standard air release valve, inflation bulb, blue nylon calibrated cuff and zippered carrying case

ITEM #	SIZE	CUFF SIZE	QTY
09-149-011	Adult	11"–16.4"	1
09-149-016	Large Adult	13"–20"	1
09-149-015	Child	7.7"–11.3"	1

Sphygmomanometers



MABIS® MatchMates® Aneroid Sphygmomanometer Kit

- ✦ Manual blood pressure cuff is equipped with an easy to squeeze inflation bulb for better operation, aneroid gauge that shows large easy-to-read numbers, perfect for those with poor vision.
- ✦ Sphygmomanometer includes calibrated adult sized nylon cuff, inflation bulb, aneroid gauge, and sleek oversized matching carrying case.

ITEM #	COLOR	QTY
01-160-021	Black	1
01-160-081	Red	1
01-160-151	Magenta	1
01-160-201	Purple	1
01-160-211	Royal Blue	1
01-160-241	Navy	1



MABIS® MatchMates® Dual-Head Combination Kit

- ✦ MatchMates® aneroid sphygmomanometer with calibrated nylon cuff and dual head stethoscope
- ✦ Stethoscope includes: binaural, lightweight anodized aluminum chestpiece, 22" vinyl Y-tubing, spare diaphragm and a pair of mushroom eartips
- ✦ Convenient matching nylon carrying case.

ITEM #	COLOR	QTY
01-260-021	Black	1



MABIS® MatchMates® Sprague Rappaport-Type Combination Kit

- ✦ MatchMates® aneroid sphygmomanometer with calibrated nylon cuff and 31" sprague rappaport-type stethoscope
- ✦ Stethoscope includes: (3) bells (adult, medium, and infant), (2) diaphragms (small and large) and 3 types of eartips
- ✦ Oversized, matching carrying case

ITEM #	COLOR	QTY
01-360-021	Black	1
01-360-081	Red	1
01-360-161	Teal	1
01-360-211	Royal Blue	1
01-360-241	Navy Blue	1

Sphygmomanometers



MABIS® MatchMates® Fanny Pack Combination Kit

- ✦ Sprague rappaport-type stethoscope includes: (3) bells (adult, medium, and infant), (2) diaphragms (small and large) and 3 types of eartips
- ✦ Aneroid sphygmomanometer with calibrated nylon cuff
- ✦ Fanny pack with 3 pockets

ITEM #	COLOR	QTY
01-365-211	Royal Blue	1



HealthSmart® Two-Party Home Blood Pressure Kit

- ✦ Complete home blood pressure kit allows for easy monitoring by an individual or with assistance from another person
- ✦ 22" stethoscope length

ITEM #	SIZE	CUFF SIZE	QTY
04-176-021	Adult	10"– 14"	1
04-176-026	Large Adult	13"– 17"	1



HealthSmart® Self-Taking Home Blood Pressure Kit

- ✦ Complete kit with everything an individual needs to start monitoring their blood pressure at home
- ✦ 22" stethoscope length

ITEM #	SIZE	CUFF SIZE	QTY
04-174-021	Adult	10"– 14"	1
04-174-026	Large Adult	13"-17"	1

Sphygmomanometers



MABIS® Single Patient Use Blood Pressure Cuffs

- ✦ Designed to reduce the spread of infection through cross-contamination
- ✦ All cuffs are manufactured from a soft, yet durable vinyl material that wipes clean quickly
- ✦ The patient side has an extra soft lining
- ✦ Quality hook and loop closures
- ✦ Standard luer and universal connectors allow MABIS® Single-Patient Use Blood Pressure Cuffs to be adapted to a wide range of manual and automatic blood pressure apparatuses
- ✦ All cuffs have dual-seam construction and are inspected and tested to be leak-free for consistent and reliable performance

ITEM #	SIZE	RANGE	COLOR	QTY
06-270-195	Child	12 – 19	White	5/BOX
06-270-196	Large Adult	31 – 40	White	5/BOX
06-273-192	Neonatal #3	6 – 11	White	10/BOX
06-275-192	Neonatal #5	8 – 15	White	10/BOX



MABIS® Single Patient Use Sphygmomanometer

- ✦ Designed to reduce the spread of infection
- ✦ Economical aneroid gauge. Disposable bulb and valve assembly. MABIS® Single-Patient Use Blood Pressure Cuff

ITEM #	SIZE	RANGE	COLOR	QTY
06-148-131	Adult	22 – 33	Yellow	5/BOX
06-148-191	Adult	22 – 33	White	5/BOX
06-148-196	Large Adult	31 – 40	White	5/BOX



MABIS® Single Patient Use Inflation System

- ✦ For use with all manual blood pressure monitoring devices
- ✦ Ideal for patient admission kits
- ✦ Complete inflation system is disposable
- ✦ Packed 5 cuffs per box

ITEM #	SIZE	RANGE	COLOR	QTY
06-214-191	Adult	23 – 33	White	5/BOX

Sphygmomanometers



HealthSmart® Upper Arm Blood Pressure Monitor Replacement Cuff

ITEM #	SIZE	DIMENSIONS	QTY
04-240-006	Large Adult	16.5" x 18.875"	1
04-245-000	Universal	8.6 x 16.5"	1



MABIS® Sphygmomanometer Blood Pressure Replacement Cuff

- + Replacement cuff made of strong nylon.

ITEM #	SIZE	CUFF SIZE	TUBES	QTY
05-260-016	Large Adult	13"–20"	2	1
05-260-011	Adult	11"–16.4"	2	1
05-260-013	Infant	5.5"–7.8"	2	1
05-269-011	Adult	11"–16.4"	1	1



MABIS® Adult Bladder

- + Replacement Bladder only.
- + Adult size.
- + For blood pressure cuffs.

ITEM #	SIZE	TUBES	QTY
05-281-023	Infant	1	1
05-283-021	Adult	2	1

Infection Prevention

Gowns



DMI® Convalescent Hospital Gown with Back Tape Ties

- ✦ Designed for easy dressing and undressing of homebound, hospital or nursing home patients. Fits most people up to 40 inch waist. Gown is about 36 inches long, measuring from the shoulder.
- ✦ Large, comfortable raglan sleeves allow movement of the arms and help prevent the fabric from gathering.
- ✦ Ties in back at neck and waist secure the gown.
- ✦ Constructed of durable polyester cotton blend fabric. Machine washable

ITEM #	COLOR	QTY
532-8030-6800	Blue	12



DMI® Convalescent Gowns with Snaps

ITEM # 532-8030-0139

- ✦ Snaps running the length of the gown ensures a secure fit
- ✦ Large raglan sleeves allow movement of arms and help prevent fabric from gathering
- ✦ Made of durable polyester/cotton blend fabric. Machine washable



DMI® Easy Access Snap Gown

ITEM # 532-8032-0139

- ✦ Designed for easy dressing and undressing
- ✦ Snaps on shoulders allow for breast feeding or IV application
- ✦ Made of durable polyester/cotton blend fabric. Machine washable

Infection Prevention

Bibs, Masks & Gloves



DMI® - Reusable Patient Clothing Protector

ITEM # 532-6029-7300

- ✦ Chest to lap protection
- ✦ Hook and loop closure at neck
- ✦ Made of polyester/cotton cover with waterproof barrier
- ✦ 17 3/4 x 36 inches



DMI® - Reusable Patient Clothing Protector

ITEM # 532-6014-2400

- ✦ Hook and loop closure at neck
- ✦ Made of absorbent, durable navy terry cloth
- ✦ Water resistant backing
- ✦ Machine washable
- ✦ Sized at 17 1/4 x 32 1/2 inches



HealthSmart® Disposable 3 Layer Face Mask

- ✦ Disposable single use 3 Layer face mask
- ✦ Easy to put on and take off with elastic loops and adjustable nose clip bar

ITEM #	QTY
79-1870	50



Full Face Shield

- ✦ Plastic shield to protect the face
- ✦ Easy to put on and take off with elastic back

ITEM #	QTY
79-1900	250



Adenna® Vinyl Powder-Free Exam Gloves

- ✦ VPF Vinyl Exam Glove. Powder Free.
- ✦ Very comfortable as this glove is soft and fits snugly on the hands.

ITEM #	SIZE	QTY
D 70-232	Small	100
D 70-235	Medium	100
D 70-236	Large	100



Aurelia® Sonic Nitrile Powder-Free Exam Gloves

- ✦ Finger textured
- ✦ Latex free. Non-Sterile

ITEM #	SIZE	QTY
D 70-93776	Small	100
D 70-93778	Large	100

Infection Prevention

Wipes



HealthSmart® Flushable Wipes

- ✦ Pre-moistened wipes that flush easy and disintegrate fast.
- ✦ 99% water wipes that are gentle on sensitive skin and are made without alcohol. Made from 100% plant-based material.
- ✦ Resealable tape keeps the wipes from drying out.

ITEM #	QTY
640-2507-0024	24 pack
640-2507-0060	60 pack
640-2507-3060KIT	(3) 60 pack



DMI® CPAP Mask Wipes, 72ct

ITEM # 640-1000-0072

- ✦ Quickly removes dirt, oil, grease, and other organic residue keeping your mask and supplies fresh and free of debris.
- ✦ Extra-large wipes with dimensions of 8" x 6".
- ✦ Cleans and protects without the use of harsh chemicals. Alcohol and latex free. Unscented.



HealthSmart® Adult Bathing Wet Wipes, 10ct, Pack of 12

ITEM # 640-2506-0010

- ✦ On-the-go moisturizing wet wipes that are infused with Vitamin E & Aloe for a fresh clean, that leaves skins smooth and moisturized.
- ✦ The wipes are rinse-free, and unscented, making them the perfect wipe to use anytime and anywhere.
- ✦ pH balanced so they can be used anywhere to clean and refresh.
- ✦ Wipes measure 9" x 9"



DMI® DMI Alcohol Prep Pads

ITEM # 170-220-0100

- ✦ Large Sterile 2-Ply Construction - Durable 2-ply nonwoven pads maintain sterility.
- ✦ Individually wrapped sterile pads ensure hygiene and prevent cross-contamination, perfect for clinical settings and home care.
- ✦ Not made with natural rubber latex.
- ✦ Professional Medical Grade - NDC number 85734-002-01, meeting medical device standards for healthcare facilities, diabetic care, first aid, and wound cleaning applications.

Medical Supplies

First Aid Kits & Instruments



MABIS® Precision™ Cut Shears Scissors

- ✦ Made from hardened stainless steel, these precision shears are made to cut through the toughest materials.
- ✦ The serrated edges effortlessly cut through bandages, tape and paper.
- ✦ Ideal for doctors, nurses, EMTs, athletic trainers and physical therapists.

ITEM #	SIZE	COLOR	QTY
27-755-010	7.5 inches	Blue	1
27-755-020	7.5 inches	Black	1
27-757-020	5.5 inches	Black	1



MABIS® Precision™ Scissors and Instruments

- ✦ Ideal for doctors, nurses, surgeons, EMTs, athletic trainers, physical therapists and medical students.
- ✦ Great for home or medical use

ITEM #	DESCRIPTION	SIZE	QTY
25-702-000	Lister Bandage Scissors	5.5"	1
25-704-000	Lister Bandage Scissors	7.25"	1
25-724-000	Kelly Forceps, Box Lock	5.5" Straight	1
25-725-000	Kelly Forceps, Box Lock	5.5" Curved	1
25-736-000	Thumb Dressing Forceps	5.5" Serrated	1



DMI® First Aid Kits

- ✦ The first aid kit is incredibly portable and is perfect for your car, bookbag, carry-on luggage, desk drawer, handbag and more!

ITEM #	DESCRIPTION	QTY	ITEM #	DESCRIPTION	QTY
650-2600-0020	20 pieces	1	650-2600-0020KIT	20 pieces	10
650-2600-0076	76 pieces	1	650-2600-0076KIT	76 pieces	5
650-2600-0175	175 pieces	1	650-2600-0175KIT	175 pieces	2
650-2600-0298	298 pieces	1			

DMI® Sterile Gauze Pads, 5"x9", 20 Pack

ITEM # 170-2010-0020

- ✦ Superior absorbency for heavy drainage. Large 5"x9" pads.
- ✦ Single use only. Non-stick and durable. Not made with natural rubber latex.
- ✦ Individually wrapped and sealed in a peel-down pouch for aseptic handling. Suitable for both professional and personal medical wound care & dressings.



Medical Supplies

Otoscopes



KaWe COMBILIGHT® C10/E10 Ophthalmoscope/Otoscope Basic Kit

ITEM # 20-816-000



- + Eurolight ophthalmoscope head E10 with correction lens wheel of stages +/- 20 diopters and six diaphragms
- + Large examination field of the fundus of the eyes
- + Combilight C10 otoscope head features standard illumination with 2.5V vacuum bulb, three-times magnification and rotating lens

KaWe COMBILIGHT® C10 Otoscope with Case

ITEM # 20-850-000



- + Features standard illumination with 2.5V vacuum bulb, 3x magnification and rotating lens
- + Dimmable rheostat
- + 3 reusable ear specular, 2.5mm, 3.5mm and 4.0mm

Requires 2 C batteries (not included) or KaWe rechargeable battery

KaWe EUROLIGHT® C10 Combination Kit with Case

ITEM # 20-864-000



- + EUROLIGHT® ophthalmoscope head E10 and EUROLIGHT® C10 otoscope head with interchangeable handle
- + Ophthalmoscope head has correction lens wheel of stages +/- 20 diopters and 1 diaphragm
- + Otoscope features standard vacuum bulb illumination, 3x magnification and rotating lens
- + 20 disposable ear specula, 10 each 2.5mm and 4.0mm
- + Requires 2 C batteries (not included) or KaWe rechargeable battery

KaWe EUROLIGHT® C10 Otoscope with Case

ITEM # 20-810-000



- + Features standard illumination with 2.5V vacuum bulb, 3x magnification and rotating lens
- + Dimmable rheostat
- + 20 disposable ear specula, 10 each 2.5mm and 4.0mm
- + Requires 2 C batteries (not included) or KaWe rechargeable battery

Disposable Ear Specula for KaWe® Otoscope

- + 100 per pack
- + Black



ITEM #	SIZE	QTY
20-910-000	2.5 mm	100/pack
20-911-000	4.0 mm	100/pack

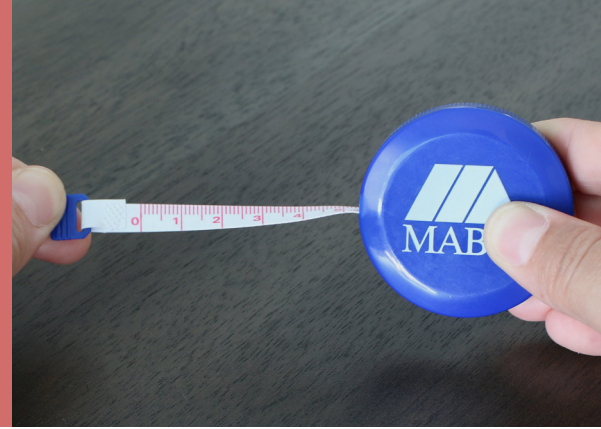
Disposable Ear Specula for KaWe® Otoscope

- + 100 per pack
- + Black



ITEM #	SIZE	QTY
20-913-000	2.5 mm	100/pack
20-912-000	4.0 mm	100/pack

Medical Supplies



MABIS® Exam Penlights for Medical or Personal Use

- + Easy to use. To activate light, press and hold the pen clip.
- + Not just a medical penlight! They are perfect for completing many tasks in the dark like searching for keys or keyholes.
- + Compact, economical size for easy carrying and travel. The clip makes them convenient to carry in your pocket.

ITEM #	DESCRIPTION	QTY
32-760-000	Disposable	6/pack
32-765-000	Reusable	6/pack



MABIS® Tape Measures - 60 inches

- + Compact tape measure is handy to have around the house or to carry in your pocket or purse for when you need to measure on the go
- + Flexible tape can measure round or straight objects
- + Shows inches on one side, centimeters on the other
- + 2 inch diameter plastic case has push button retractor

ITEM #	DESCRIPTION	QTY
35-780-010	Blue	1
35-780-000	White	1



MABIS® Sterile Foil Baby Bunting Emergency Baby Blanket

ITEM # 650-4006-0600

- + Never be caught off-guard. This lightweight, heat-conserving emergency blanket is easy to store in your home, car or business. Simply open and unfold when you need it.
- + Ideal for moms, dads, grandparents, hospitals, daycare facilities, EMTs and other first responders
- + The single-use wrap has a hood, too, with an opening for your infant's face.
- + Baby bunting is completely sterilized metalized polyester film; size: 30 x 30 inches



MABIS® Glass Sundry Jar

Item # 39-813-000

- + This versatile jar can store anything from candy to cotton balls.
- + Alluminum lid lifts on and off easily. No need to worry about lining up screw threads. The wide mouth makes accessing necessities easy and simple. Can also be used as an ear syringe.
- + Dimensions: 4.1" x 3.9" x 7" and can hold approx. 28-32oz.

Medical Supplies



Mabis® ID Wrist Bands

- ✦ Tubular medical bracelets are designed to be durable and comfortable without irritation.
- ✦ Can be used repeatedly, highly flexible, tear resistant, will not scratch
- ✦ Secure closure with a male and female connector to protect information, hinder removal
- ✦ Contains reusable inserts to change or update information as needed. 52 tubular bands, 64 white inserts, 32 pink, 32 blue, and 32 green

ITEM #	DESCRIPTION
190	Wrist Bands
19010	Replacement Inserts



DMI® Textured Tourniquet, 1" x 18"

ITEM # 47-874-000

- ✦ Ensures safe restriction of blood flow
- ✦ Easy-to-use, textured elastic strip
- ✦ 250 per bag
- ✦ 1 x 18 inches



DMI® Nasal Oxygen Cannula Tubing, 7ft

ITEM # 40-300-50

- ✦ Designed with a smooth hose for extended wear without irritation.
- ✦ Durable and Flexible: 7-foot tubing offers flexibility and ease of movement for daily use.
- ✦ Universal Fit: Standard connector ensures compatibility with most oxygen sources.
- ✦ Pack of 50: Provides ample supply for extended use or healthcare settings. Each unit is individually wrapped for ease of use and sanitation.



MABIS® Cann-U-Wrap™ Cannula Tubing Pads

- ✦ Super-soft foam helps reduce chafing and sores
- ✦ Easy to wipe clean; provides continuous "air-cooled" comfort
- ✦ Thin, 5-3/4" strips can be trimmed to fit any size contact area
- ✦ Adheres firmly to tubing

ITEM #	COLOR	QTY
12033	White	10 pr/pk; 10 pk/box

www.livehealthsmart.com

Medical Supplies

Limb Restraints



Heelbo® INCH™ Quick Release Limb Holder (Rx Only)

- ✦ Soft, quilted material is cool and comfortable.
- ✦ Unique wrist adjustment provides perfect fit without cinching or tourniquet effect.
- ✦ Knotless clasps are simple to use and allow fast and easy access to patient.
- ✦ Hook and loop fasteners and quick release loop accessory on preset loop style eliminates untying or cutting off knot.
- ✦ Large enough to accommodate armboards.
- ✦ Straps adjust to: 60" length.
- ✦ Machine-washable.

ITEM #	REGULAR	SIZE	QTY
12042	Small	11.5" x 3"	1
12044	Large	12.5" x 3"	1
ITEM #	W/ PRESET LOOP	SIZE	QTY
12046	Small	11.5" x 3"	1



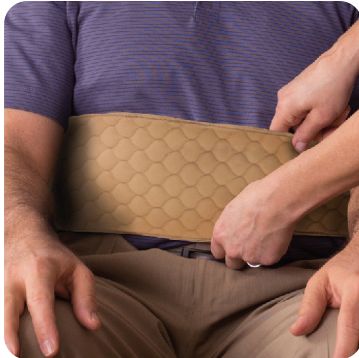
Heelbo® Limbo™ Quilted Limb Holder (Rx Only)

- ✦ Cool and comfortable quilted material
- ✦ Quick release in emergencies - special D-ring and clasp lets go in five seconds or less
- ✦ Large enough to accommodate armboards
- ✦ Straps adjust to: 60" length
- ✦ Machine-washable

ITEM #	DESCRIPTION	SIZE	QTY
12068	Small - Regular	11.5" x 3"	6 each/box
12069	Large - X-Large	12.5" x 3"	6 each/box

Medical Supplies

Limb Restraints



Heelbo® Quilted Torso Restraint (Rx Only)

- + Constructed of soft, quilted material
- + Can be used for both the upper torso and lower extremities
- + Durable lock jaw buckles for knotless release on both sides of restraint
- + Each strap length: adjusts to 40"; quilted torso cover: 3.5" x 4.75"
- + Machine-washable

ITEM #	QTY
12072	6 each/box



Heelbo® L-Bow™ Arm Holder System (Rx Only)

- + Keeps patient's hands away from face and IV tubing
- + No rivets to abrade skin
- + Soft, comfortable material can be applied directly to skin
- + Easy to apply with hook and loop closures
- + Machine-washable

ITEM #	DESCRIPTION	SIZE	QTY
12077	Pediatric, Small	7" x 5"	12 each/box
12078	Pediatric, Medium	8" x 7"	12 each/box
12079	Pediatric, Large	10" x 8"	12 each/box
12080	Adult, Medium	11" x 10"	6 pr/box
12081	Adult, Large	13" x 12"	6pr/box



Daily Living Aids

Reacher Grabbers



DMI® Aluminum Reachers with Magnetic Tip

- + This best-selling reacher eliminates excessive bending and reaching.
- + Wide 2.5 inch jaw opening features interlocking tips for a secure grip.
- + Slip-resistant, ergonomic, contoured handle feels comfortable in your hand.
- + Magnetic tip picks up light metal objects.

ITEM #	SIZE	DESCRIPTION	QTY
640-1764-0621	26 inches	Non-folding	1
640-1764-0623	32 inches	Non-folding	1
640-1764-0626	32 inches	Non-folding	2
640-1768-0623	32 inches	Folding	1

HealthSmart® Adjustable Length Reacher with Rotating Jaw

ITEM # 640-1800-0000

- + Features an innovative adjustable length design that extends your reach a full 30 to 44 inches. The locking ring securely keeps the reacher at its desired length.
- + Wide 5.5 inch jaw opening gives you a tight, effortless grip on your items. The ergonomic, contour handle feels comfortable in your hand as you maneuver the reacher.



DMI® Suction Cup Reacher Grabber

- + This handy, lightweight suction cup reacher is ideal for grabbing hard-to-reach items
- + The easy-to-use trigger handle gives you a secure grip with minimal effort. It won't tire your hands.
- + 3 ½ inch jaw opening

ITEM #	SIZE	DESCRIPTION	QTY
640-1774-0621	22 inches	Suction Claw	1
640-1774-0623	33 inches	Suction Claw	1



Daily Living Aids

Home Aids



DMI® Foot Stool

- ✦ Steel frame. Weight capacity: 300 lbs.
- ✦ Non-slip textured matting on stool surface.
- ✦ Reinforced slip-resistant rubber tips for added stability.
- ✦ Stool Platform Dimensions: 14.5" x 10"; Base of legs: 16.5" x 12.5"
- ✦ Stool Height: 9"; Handrail height: 34".

ITEM #	DESCRIPTION	QTY
539-1902-0099	Foot Stool w/ Handle	1
539-1904-0099	Foot Stool	1



DMI® Folding Shopping Cart

ITEM # 640-8213-0200

- ✦ Durable and lightweight weighing only 7.5lbs but able to hold up to 90lbs. Perfect to use as a grocery cart, laundry cart, art supply organizer or cleaning supplies organizer making it functional and efficient.
- ✦ The textured hand grip allows for a no slip surface making it both ergonomic and easy to carry while climbing stairs or going over curbs.
- ✦ Overall rolling cart size is 15" x 17" X 36". Actual storage basket area is 12" x 10" x 20".



HealthSmart® Expandable Door Hinges (2/pk)

ITEM # 640-2006-0000

- ✦ Adds 2" to doorways, allowing barrier free access for most wheelchairs, walkers and transfer chairs. The 3-hole side measures 2" x 3.5".
- ✦ An easy, inexpensive way to expand most doorway openings. Ideal for narrow doorways.
- ✦ Install using the same screws and holes as the existing hinge.
- ✦ Decorative brass finish looks attractive.



DMI® Call Bell with Wood Handle

ITEM # 640-5401-0000

- ✦ Multi-purpose ringing bell with handle grabs attention when needed.
- ✦ Call bell can be used in offices, while caring for the sick, elderly or disabled at bedside.
- ✦ Lightweight and easy to grab with one hand.
- ✦ Measures 4.75" in length with a crisp melodic tone. Handle is made of wood.

Daily Living Aids

Home Aids



HealthSmart® Cordless Water Flosser

- ✦ Cordless water flosser removes food debris, is a great option to use for braces, promotes healthy gums, and essential for tongue cleaning.
- ✦ 6 pulsating Modes; 360° rotating nozzle; Type-C USB charging; 250mL water tank capacity.
- ✦ Includes 4 nozzles: Standard nozzle for daily cleaning, nozzle for braces, periodontal nozzle for the gums and a special tongue cleaning nozzle.

ITEM #	DESCRIPTION	QTY
640-4650-0000	Water Flosser	1
640-4651-0004	Replacement Tips	4pcs



HealthSmart® Blue Light Reading Glasses

ITEM # 640-3860-0000

- ✦ Reduces eye strain, fatigue, headaches and blurry vision by blocking harmful blue light.
- ✦ UV400 / UVA/UVB protection and 2.0 magnification.
- ✦ Ultra-light, flexible, and durable frames with spring hinges make them comfortable to wear for long periods of time and fit most face shapes.
- ✦ Traditional style frames make these great for men and women alike.
- ✦ Includes 5 pairs of 2.0x magnification and 1 storage case.

DMI® Digital Body Scales

- ✦ The scale comes with auto-on and off technology, low battery and overload alerts and 2(AAA) batteries.
- ✦ A large LCD screen makes the numbers easy-to-read, and the sleek tempered glass boasts exceptional durability while perfectly meshing with any bathroom décor.
- ✦ Mode conversion key allows for the scale to measure in pounds, kilograms and stone. Weight capacity is higher than most digital scales at 440 lbs.
- ✦ Features step on technology that will produce an instant weight result with clinical accuracy.
- ✦ Size: 11.75" x 11.75" x 0.875". Weight Capacity: 440 lbs.



ITEM #	SIZE	QTY
640-9056-0000	Digital Scale	1
640-9057-0020	Talking Digital Scale	1

www.livehealthsmart.com

Daily Living Aids

Home Aids



HealthSmart® Night Light 2pk

ITEM # 599-7003-0000

- + Our LED night light is designed to be slim and modern, so it fits in perfectly with any style of room décor as a decorative accent light.
- + The soft LED technology provides a calming glow while still providing ample lighting for nighttime safety.
- + Designed to be energy efficient with auto on and off light sensor while using minimal energy when active and never having a bulb that needs to be replaced.



Habitat® White Noise Machine & Multi-Color Night Light

ITEM # 640-0200-0000

- + Loaded with features including: 5 lullaby sounds, 10 white noise sounds, 10 nature sounds, 4 timer options, and 11 nightlight colors.
- + 15 different sound levels allow for incremental volume adjustments.
- + Makes the perfect sleep aid accessory for adults, kids, and babies.
- + With Bluetooth enabled capability, the sleep sound machine doubles as a speaker and connects easily to your phone!

NEW!



DMI® Contoured Sleep Mask

ITEM # 554-7917-0000

- + Ergonomic design: Contours perfectly to your face with plush memory foam for ultimate comfort.
- + Superior light blocking: Ensures complete darkness for uninterrupted sleep or relaxation.
- + Accommodates various sleeping positions without compromising comfort.
- + Convenient travel companion: Includes a compact storage bag for easy portability.

Daily Living Aids - Home Aids



DMI® Verti-Grip Knife

ITEM # 640-9051-0000

- + Designed for downward pressure and minimal rocking motion to easily cut through most foods.
- + Provides exceptional control and grip while increasing downward cutting force.
- + Stainless steel blade with snap-on sheath included.
- + Dishwasher safe



DMI® Precision Digital Kitchen Scale

ITEM # 640-9055-0030

- + Digital kitchen scale weighs up to 11 lbs.
- + Measures Food & Liquids; Separate Milk and Water modes
- + Backlit Screen
- + Easy Tare Function
- + Made of 304 Stainless Steel



HealthSmart® DUO Beverage Handle

- + Provides a dignified solution for those who need an extra handle for grip and stability while drinking.
- + Clip-on handle design easily attaches to everyday mugs, glasses, and bottles.
- + Protects hands and fingers from hot mug surfaces.
- + Dishwasher safe, do not microwave.

ITEM #	COLOR	QTY
640-2002-0015	Blue	1



HealthSmart® uGrips™ Universal Handle Grips

- + Provides a new comfortable ergonomic grip to a variety of household items in the kitchen, garden, outdoors and even on sports equipment.
- + Fits most handles up to 1 inch in diameter.
- + Stretches and slips onto existing handles with water; no cutting or gluing.
- + Measures 5 inches.

ITEM #	COLOR	QTY
640-6700-0002	Green	1
640-6700-0003	Gray	1
640-6700-0004	Black	1
640-6700-0005	Yellow	1
640-6700-0006	Blue, Green, Gray	3/pack

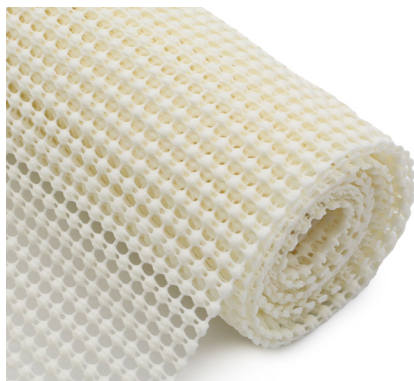
Daily Living Aids - Home Aids



DMI® Jar and Bottle Opener

ITEM # 640-6701-0000

- ✦ Includes: 4-in-1 Jar Opener; Silicone Non-Slip Pad; 5-in-1 Bottle/Can Opener
- ✦ Ergonomic design for easy handling and offers a firm grip between opener and lid. Non-slip handles ensure safety when opening. Great for those with weak hands.
- ✦ Great with different types of bottle caps, bottle tops, jar lids, cans, and more!
- ✦ The non-slip pad is made of high-quality silicone, flexible and high resistance that aids in opening a jar or bottle easily.



Handy Gourmet Non-Adhesive Cabinet, Drawer & Shelf Liners

- ✦ Our non-adhesive cabinet liners are simple to cut-to-size, have an extra-strong grip, offer maximum protection to shelves, drawers, and cabinets while adding style to your décor.
- ✦ Perfect for organizing your drawers by keeping all your household items in place. Say goodbye to unruly drawers in your kitchen, bathroom, pantry, garage, office.
- ✦ Dual-purpose capability allows for excess pieces to be used to stop sliding mattresses, couch cushions, chairs, rugs and provides extra grip for opening jars.
- ✦ Simple to clean with household soap and a damp sponge or cloth.



ITEM #	SIZE	QTY
640-9201-0002	10" x 16"	4 sheets
640-9201-0003	16" x 20"	4 sheets



HealthSmart® Touch Portable LED Magnifier

ITEM # 640-3000-0000

- ✦ Bright LED light that will magnify what you are reading. Whether you are reading fine print on medicine labels, maps or a restaurant menu this LED magnifier enhances what you see.
- ✦ 2X and 4X magnification offers superior clarity, perfect for those with poor vision.

Daily Living Aids

Pill Organizers, Cutters & Crushers

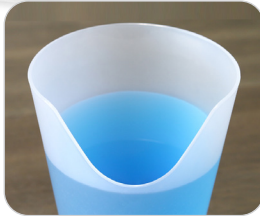


HealthSmart® Large Weekly Medication Planner

ITEM # 640-8223-0000

- ✦ Ideal for multiple medications
- ✦ Quick-release daily pill compartments with specific hour dosage time frame
- ✦ Transparent plastic for medication dosage monitoring
- ✦ Made of heavy-duty plastic and is dishwasher safe

ITEM #	DESCRIPTION	QTY
640-8224-0002	Zebra	1
640-8224-0003	Black	1



HealthSmart® Fashion Travel Pill Case 7 Day Pill Planner Organizer

- ✦ This stylish and discreet pill case looks like a small wallet and fits compactly in your purse or bag
- ✦ Each compartment holds up to 15 average size pills
- ✦ Snap closure on each inner compartment keeps your pills secure; outer case has a magnetic closure
- ✦ Days of the week are written in English, Spanish and Braille

Daily Living Aids

Pill Organizers, Cutters & Crushers



HealthSmart® Large Weekly Medication Planner

ITEM # 640-8223-0000

- ✦ Ideal for multiple medications
- ✦ Quick-release daily pill compartments with specific hour dosage time frame
- ✦ Transparent plastic for medication dosage monitoring
- ✦ Made of heavy-duty plastic and is dishwasher safe



HealthSmart® Fashion Travel Pill Case 7 Day Pill Planner Organizer

- ✦ This stylish and discreet pill case looks like a small wallet and fits compactly in your purse or bag
- ✦ Each compartment holds up to 15 average size pills
- ✦ Snap closure on each inner compartment keeps your pills secure; outer case has a magnetic closure
- ✦ Days of the week are written in English, Spanish and Braille

ITEM #	DESCRIPTION	QTY
640-8224-0002	Zebra	1
640-8224-0003	Black	1



HealthSmart® 4-in-1 Pill Cutter & Crusher

ITEM # 640-6440-0001

- ✦ This pill cutter, crusher, storage compartment, and drinking cup combination is perfect for home, travel, or keeping one at work.
- ✦ Each unit combines a pill cutter, fine powder crusher, storage, and water cup in a compact, easy-to-carry case.
- ✦ Sharp stainless-steel blade ensures clean, accurate cuts, while the precision grinder quickly turns pills into powder—ideal for those with swallowing difficulties.
- ✦ Includes a built-in drinking cup for taking medication immediately, making this perfect for travel, bedside tables, or emergency kits.



HealthSmart® Pill Crusher

ITEM # 640-6439-0000

- ✦ Crush tablets into a fine powder by twisting the top of this attractive red and clear pill crusher
- ✦ It's a fast and safe way to make your pills easier to swallow
- ✦ Conveniently store pills in the pill compartment at the bottom which is divided into two sections
- ✦ Durable and lightweight



HealthSmart® Pill Cutter

ITEM # 640-5437-0000HS

- ✦ Has heavy-duty plastic construction
- ✦ The pill cutter splits most any size pill

Daily Living Aids

Dressing Aids



flexible head

DMI® Long Handled Metal No Bend Shoe Horn with Flexible Head

ITEM # 640-8112-0000

- ✦ This long handled shoe horn extends your reach 24 inches, eliminating bending when putting on your shoes.
- ✦ The flexible contoured head adjusts to your shoe.
- ✦ Handle strap allows you to hang the shoe horn in a convenient place.



DMI® Deluxe No Bend Sock Aid

ITEM # 640-8140-0055

- ✦ Ideal for those who have a limited range of motion or are recovering from hip, knee or back surgery.
- ✦ Terry cloth cover helps prevent the sock from slipping; nylon lining reduces friction.
- ✦ Convenient sock aid device that is durable and easy to use; 29 inch straps with loop handles.



HealthSmart® Steel Shoe Horn

ITEM # 640-8174-1900HS

- ✦ Slip into shoes without bending, bruising heels or crushing backs of shoes.
- ✦ Hanger hole for storage.
- ✦ White, epoxy-coated steel construction.
- ✦ Length: 24 inches



DMI® Leg Lifter Strap

ITEM # 640-8222-0000

- ✦ The DMI Leg Lifter has a large loop at both ends to grasp and lift the leg or cast.
- ✦ The 32" aluminum rod shaft is covered with 1" webbing.



DMI® Wood Dressing Stick, Button Aid and Zipper Pull

ITEM # 640-8104-0021

- ✦ The durable wood construction is made to last and feels comfortable in your hand.
- ✦ Compact and portable. This lightweight dressing stick is only 9 1/4 inches long so you can take it anywhere. It fits nicely in your bag, purse or backpack.



DMI® Wood Dressing Aid Stick

ITEM # 640-8110-0000

- ✦ Product copy to be added. Durable wood construction is made to last.
- ✦ Easy-to-grip, lightweight design
- ✦ Length: 27 inches



HealthSmart® PocketDresser™ All-in-One Tool

ITEM # 640-9050-0001

- ✦ Zipper Pull - Pull up or pry out buried zipper tabs. Also makes undoing shoe laces quick and easy.
- ✦ Button Loop - Provides excellent control when fastening mid-sized shirt buttons. Small button hook. Ideal aid for small or delicate shirt collar buttons.
- ✦ Large Button Hook - Easily handles thick denim jean buttons.



HealthSmart® Zipper Ring Pulls

ITEM # 640-9002-0000

- ✦ Assists people with arthritis or limited hand dexterity to hold on to zippers.
- ✦ Ideal for clothing, purses and jackets
- ✦ Includes: 3 ring pulls
- ✦ Ring Diameter: 1 inch



DMI® Shoe Horn and Sock Aid Kit

ITEM # 640-3860-0000

- ✦ Ideal for those who have a limited range of motion or are recovering from hip, knee or back surgery.
- ✦ Convenient combination includes sock aid and shoe horn that are durable and easy to use.
- ✦ Slip shoe horn into shoes without bending, bruising heels or crushing backs of shoes.
- ✦ Easy grip handle allows you to have control over both the sock aid and shoe horn.



Pet Care



HealthSmart® Pet Grooming Wipes

- ✦ Resealable packaging with secure locking lid keeps the wipes fresh and moist for a longer shelf life.
- ✦ Perfect for travel and to take to dog parks, appointments, play dates and more.
- ✦ Environmentally friendly, 100% biodegradable. No harsh chemicals, alcohol, or parabens.
- ✦ Cleans without any sticky residue so your pet will always feel and look fresh and clean.

ITEM #	SIZE	QTY
360-2510-0100	7" x 8"	100/pk



HealthSmart® Pet Ear & Eye Wipes

- ✦ Our pre-moistened pet wipes are perfect for daily use to control wax buildup in the ear and keep the eyes of your fur baby free of debris.
- ✦ Great for cleaning in-between paws as well!
- ✦ Our resealable container easily stores in a purse or bag, ready to go on your next walk or pet playdate.

ITEM #	SIZE	QTY
360-2511-0100	2.5"	100/pk



DMI® Pet Disposable Underpads

- ✦ Disposable pet pee pads with triple-layer protection. The polymer-filled central layer captures and holds up to 3000ml of water (Urine)
- ✦ Medical-grade pads absorb liquids and odor quickly.
- ✦ The polypropylene backing ensures the pads hold a consistent grip.

ITEM #	SIZE	QTY
360-7097-1950	36" x 36"	50

Nourish Beauté®

Shampoo and Conditioner



Nourish Beauté® Premium Vitamins Hair Growth Support Shampoo & Conditioner

ITEM # 200-1350-0101

- + Sulfate-Free, lightweight duo that strengthens and nourishes strands for soft, movable volume all day long.
- + Procapil® is clinically proven to stimulate hair growth and decreases hair loss.
- + Redensyl® directly targets the hair follicle to re-balance your natural growth while decreasing hair loss.
- + Baicapil™ is clinically proven to combat hair loss and increase hair density.



Nourish Beauté® Premium Vitamins Hair Growth Support Shampoo

ITEM # 200-1150-0001

- + Gentle cleanse, sulfate-free formula to balance, smooth and boost volume.
- + Procapil® is clinically proven to stimulate hair growth and decreases hair loss.
- + Baicapil™ is clinically proven to combat hair loss and increase hair density.
- + Infused with biotin and keratin proteins.



Nourish Beauté® Vitamins Hair Growth Support Conditioner

ITEM # 200-1200-0001

- + Baicapil™ is clinically proven to combat hair loss and increase hair density.
- + Redensyl® directly targets the hair follicle to re-balance your natural growth while decreasing hair loss.
- + Infused with good for you ingredients like biotin, keratin proteins and argan oil.



Nourish Beauté® Vitamin Hair Growth Support Shampoo

ITEM # 200-1250-0001

- + The perfect daily hair regrowth vitamin shampoo to balance, smooth and boost volume.
- + Procapil® is clinically proven to stimulate hair growth and decreases hair loss.
- + Infused with biotin and nourishing coconut and castor oils.



Nourish Beauté® Vitamins Hair Growth Support Shampoo & Conditioner

ITEM # 200-1300-0101

- + Lightweight duo that strengthens and nourishes strands for soft, movable volume all day long.
- + Procapil® is clinically proven to stimulate hair growth and decreases hair loss.
- + Redensyl® directly targets the hair follicle to re-balance your natural growth while decreasing hair loss.

Nourish Beauté®

100% Natural, Mens, Dry Shampoo



Nourish Beauté® 100% Natural Hair Growth Support Conditioner

ITEM # 200-1750-0001

- ✦ Natural, plant-based duo that strengthens and nourishes strands for soft, movable volume all day long.
- ✦ Infused with natural menthol to rejuvenate and soothe the scalp.
- ✦ Baicapil™ is clinically proven to combat hair loss and increase hair density.
- ✦ Increases hair strength and thickness.
- ✦ Infused with essential amino acids and vitamins to soften your strands.



Nourish Beauté® Men's Hair Growth Support Shampoo

- ✦ Lightweight but powerful duo that soothes the scalp and nourishes your roots.
- ✦ Procapil® is clinically proven to stimulate hair growth and decreases hair loss.
- ✦ Redensyl® directly targets the hair follicle to re-balance your natural growth while decreasing hair loss.
- ✦ Packed with essential vitamins + nourishing coconut and castor oils.

ITEM #	DESCRIPTION	QTY
200-3250-0001	Shampoo	1



Nourish Beauté® Hair Growth Support Dry Shampoo Powder

ITEM # 200-1850-0001

- ✦ Stimulates hair growth and reduces fallout.
- ✦ Rice Starch absorbs excess dirt & oils to naturally cleanse the scalp.
- ✦ Refreshes your roots to help extend the life of your style.
- ✦ Nourishing coconut & sunflower oils leave hair silky, soft.

Nourish Beauté®

Serums, Hair Masks and Body Scrubs



Nourish Beauté® Hair Growth Support Restorative Premium Mask

ITEM # 200-1460-0001

- + An intensive, hydrating treatment that repairs dry, damaged and over-stressed hair.
- + Designed to promote healthy hair growth to improve overall hair health, strengthen strands and boost shine.



Nourish Beauté® Burst Hair Growth Serum

ITEM # 200-1050-0001

- + Lightweight hair serum that can be used as a spot or overnight treatment.
- + Procapil® is clinically proven to stimulate hair growth and decreases hair loss.
- + Redensyl® directly targets the hair follicle to re-balance your natural growth while decreasing hair loss.
- + Packed with essential vitamins + nutrients to nourish the roots.



Nourish Beauté® Bang Eyelash Growth Renewal Serum

ITEM # 200-1550-0001

- + Visibly extends eyelashes in as little as 15 days.
- + Helps eyelashes appear longer, fuller and stronger.
- + Fortifies eyelashes with nutrients that keeps lashes strong and healthy.
- + Helps eyelashes resist against loss after make-up removal.



Nourish Beauté® Sugar Body Scrubs

- + This USDA certified Organic Body Scrub provides deep exfoliation to slough off dead skin cells and improve your's skins overall tone, texture and appearance.
- + Nourishing coconut and sunflower oils hydrate and rejuvenate for soft, smooth, flawless skin.

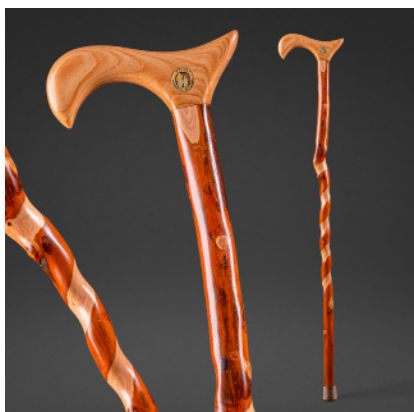
ITEM #	SCENT	QTY
200-1800-0001	Coconut	1
200-1810-0001	Lavender	1
200-1830-0001	Eucalyptus Mint	1

Brazos Walking Sticks®

Walking Canes



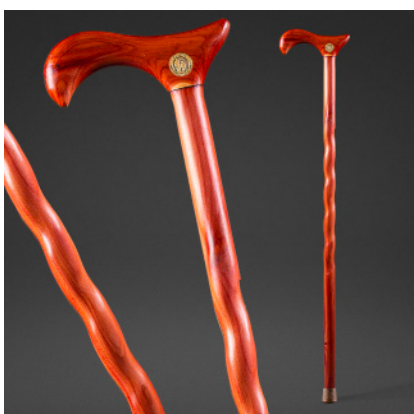
Derby Style Handle - characterized by the distinctive hook at the end of the handle. They are extremely popular due to their practicality balanced with elegance.



Brazos® Twisted Free-Form Derby Walking Canes

- ✦ **Free-Form Shaft** - The natural characteristics of the wood in your rustic hiking sticks. Free-Form walking sticks are naturally straightened and lightly sanded to keep the natural-wood rustic walking stick look.

ITEM #	WOOD TYPE	SIZE	QTY
502-3000-0086	Hickory	37"	1
502-3000-0087	Hickory	34"	1

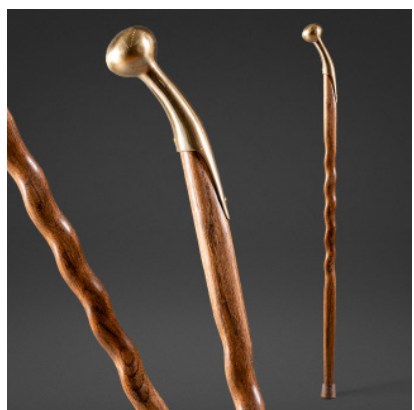


Brazos® Twisted Handcrafted Derby Walking Canes

- ✦ **Handcrafted Shaft** - walking canes are completely milled and formed from a wood blank. These canes use traditional patterns for shape and function.

ITEM #	WOOD TYPE	COLOR	SIZE	QTY
502-3000-0027	Cedar	N/A	34"	1
502-3000-0065	Cocobolo	N/A	37"	1
502-3000-0047	Oak	Flint	37"	1
502-3000-0051	Oak	Red	34'	1
502-3000-0093	Walnut	N/A	34"	1

Hame Top Style Handle - is the curved pieces on the collar of a draft horse harness where the traces are fastened. Sitting atop a Brazos cane, you just can't beat the class!



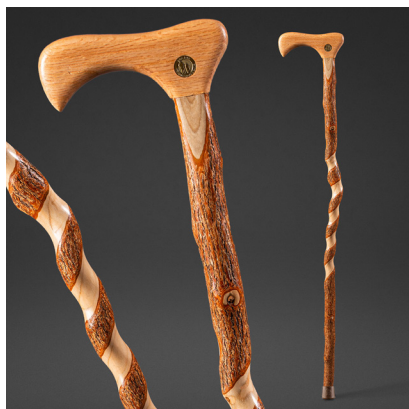
Brazos® Twisted Handcrafted Hame Top Walking Canes

- ✦ **Handcrafted Shaft** - walking canes are completely milled and formed from a wood blank. These canes use traditional patterns for shape and function.

ITEM #	WOOD TYPE	COLOR	SIZE	QTY
502-3000-0192	Cocobolo	N/A	37"	1
502-3000-0239	Oak	Brown	37"	1

Brazos Walking Sticks® - Walking Canes

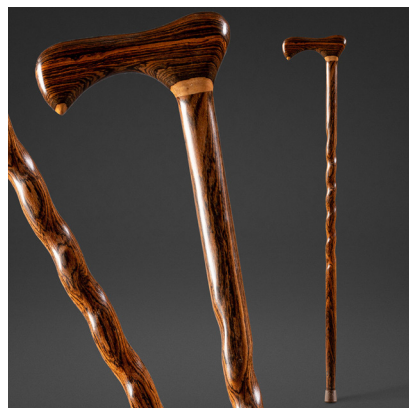
Traditional Style Cane Handle - is our most common. Designed for comfort, they fit those with a standard to larger built frame.



Brazos® Twisted Free-Form Traditional Walking Cane

✦ **Free-Form Shaft** - Includes all the natural characteristics of the wood in your rustic hiking sticks. These are naturally straightened and lightly sanded to keep the natural-wood rustic walking cane look.

ITEM #	WOOD TYPE	SIZE	QTY
502-3000-0226	Hickory	37"	1
502-3000-0269	Sassafras	37"	1

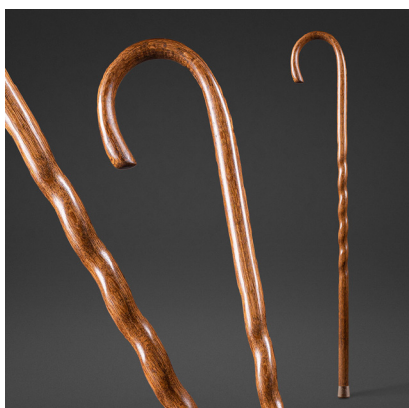


Brazos® Twisted Handcrafted Traditional Walking Cane

✦ **Handcrafted Shaft** - walking canes are completely milled and formed from a wood blank. These canes use traditional patterns for shape and function.

ITEM #	WOOD TYPE	COLOR	SIZE	QTY
502-3000-0164	Bocote	N/A	37"	1
502-3000-0158	Cedar	N/A	37"	1
502-3000-0194	Cocobolo	N/A	37"	1
502-3000-0170	Oak	Brown	37"	1
502-3000-0174	Oak	Red	37"	1
502-3000-0281	Walnut	N/A	37"	1

Crookneck Style Cane Handle - is the most traditional style of cane, borrowing from the old shepherd's crooks used by sheep herders all over the world.



Brazos® Twisted Handcrafted Crookneck Walking Canes

✦ **Handcrafted Shaft** - walking canes are completely milled and formed from a wood blank. These canes use traditional patterns for shape and function.

ITEM #	WOOD TYPE	COLOR	SIZE	QTY
502-3000-0246	Oak	Brown	37"	1
502-3000-0247	Oak	Red	37"	1
502-3000-0248	Oak	Tan	37"	1

Brazos Walking Sticks® - Walking Canes

Root Style Cane Handle - are as they sound. The handle is made from the root ball on the tree. These solid, one piece canes can't be beat when it comes to strength.



Brazos® Straight Free-Form Root Walking Canes

✦ **Free-Form Shaft** - Includes all the natural characteristics of the wood in your rustic hiking sticks. These are naturally straightened and lightly sanded to keep the natural-wood rustic walking cane look.

ITEM #	WOOD TYPE	SIZE	QTY
502-3000-0127	Hardwood	37"	1
502-3000-0138	Hardwood	37"	1
502-3000-0139	Hardwood	40"	1

Dual-Handle Style - blends beauty and ageless functionality, making it the perfect cane for the elderly who may need the cane handle but also the stick height.



Brazos® Twisted Handcrafted Dual-Handle Walking Sticks

✦ **Handcrafted Shaft** - walking sticks are completely milled and formed from a wood blank. These sticks use traditional patterns for shape and function.

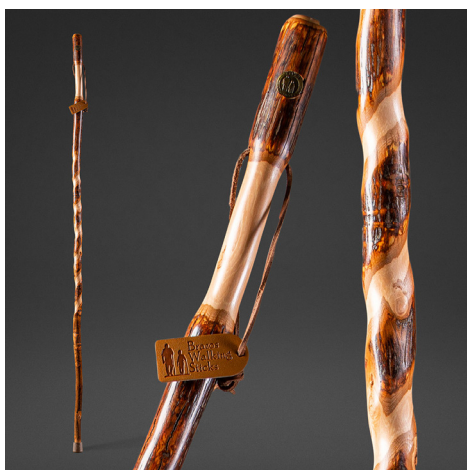
ITEM #	WOOD TYPE	COLOR	SIZE	QTY
602-3000-1362	Oak	Brown	55"	1

Brazos Walking Sticks®

Walking Sticks



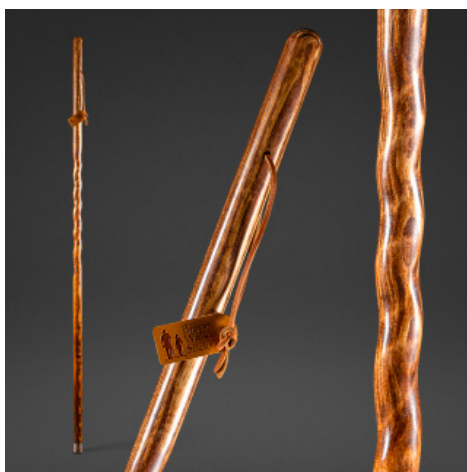
Traditional Style Handle - is the most commonly known in hiking sticks. No-frills, just the straight or natural shape of the sapling or lumber, this is the most popular style when it comes to walking sticks.



Brazos® Twisted Free-Form Traditional Walking Sticks

+ **Free-Form Shaft** - Includes all the natural characteristics of the wood in your rustic hiking sticks. Free-Form walking sticks are naturally straightened and lightly sanded to keep the natural-wood rustic walking stick look.

ITEM #	WOOD TYPE	SIZE	QTY
602-3000-1391	Hardwoods	55"	1
602-3000-1279	Hickory	41"	1
602-3000-1280	Hickory	48"	1
602-3000-1281	Hickory	55"	1
602-3000-1282	Hickory	58"	1
602-3000-1317	Sassafras	48"	1
602-3000-1318	Sassafras	55"	1
602-3000-1319	Sassafras	58"	1
602-3000-1321	Sweet gum	48"	1
602-3000-1322	Sweet gum	55"	1



Brazos® Twisted Handcrafted Traditional Walking Sticks

+ **Handcrafted Shaft** - walking sticks are completely milled and formed from a wood blank. These sticks use traditional patterns for shape and function.

ITEM #	WOOD TYPE	COLOR	SIZE	QTY
602-3000-1251	Cedar	N/A	48"	1
602-3000-1252	Cedar	N/A	55"	1
602-3000-1253	Cedar	N/A	58"	1
602-3000-1009	Oak	Red	48"	1
602-3000-1011	Oak	Brown	55"	1
602-3000-1012	Oak	Red	55"	1
602-3000-1014	Oak	Brown	58"	1
602-3000-1015	Oak	Red	58"	1
602-3000-1324	Oak	Brown	55"	1
602-3000-1325	Oak	Red	55"	1
602-3000-1326	Oak	Tan	55"	1
602-3000-1353	Oak	Brown	55"	1
602-3000-1360	Oak	Red	48"	1
602-3000-1368	Oak	Red	55"	1
603-3000-1336	Pine	Brown	55"	1
603-3000-1337	Pine	Tan	55"	1
603-3000-1338	Pine	Red	55"	1
603-3000-1339	Pine	Tan	55"	1

Brazos Walking Sticks® - Walking Sticks



Brazos® Straight Free-Form Traditional Walking Sticks

+ **Free-Form Shaft** - Includes all the natural characteristics of the wood in your rustic hiking sticks. Free-Form walking sticks are naturally straightened and lightly sanded to keep the natural-wood rustic walking stick look.

ITEM #	WOOD TYPE	COLOR	SIZE	QTY
602-3000-1148	Bamboo	Tan	48"	1
602-3000-1149	Bamboo	Red	48"	1
602-3000-1151	Bamboo	Tan	55"	1
602-3000-1152	Bamboo	Red	55"	1
602-3000-1154	Bamboo	Tan	58"	1
602-3000-1155	Bamboo	Red	58"	1
602-3000-1387	Hardwoods	N/A	41"	1
602-3000-1388	Hardwoods	N/A	48"	1
602-3000-1389	Hardwoods	N/A	55"	1
602-3000-1135	Hawthorne	N/A	48"	1
602-3000-1136	Hawthorne	N/A	55"	1
602-3000-1137	Hawthorne	N/A	58"	1
602-3000-1124	Hickory	N/A	41"	1
602-3000-1125	Hickory	N/A	48"	1
602-3000-1126	Hickory	N/A	55"	1
602-3000-1127	Hickory	N/A	58"	1
602-3000-1157	Ironwood	N/A	48"	1
602-3000-1158	Ironwood	N/A	55"	1
602-3000-1159	Ironwood	N/A	58"	1
602-3000-1180	Maple	N/A	58"	1
602-3000-1210	Sassafras	N/A	55"	1



Brazos® Straight Handcrafted Traditional Walking Sticks

+ **Handcrafted Shaft** - walking sticks are completely milled and formed from a wood blank. These sticks use traditional patterns for shape and function.

ITEM #	WOOD TYPE	COLOR	SIZE	QTY
602-3000-1236	Pine	Brown	48"	1
602-3000-1239	Pine	Brown	55"	1
602-3000-1241	Pine	Red	55"	1

Brazos Walking Sticks® - Walking Sticks

Hitchhiker Style Handle - is handcrafted from a solid piece of oak, making the overall shape more oval than round. It provides a nice grip with the hump at the bottom of the grip adding a nice resting spot for your wrist.

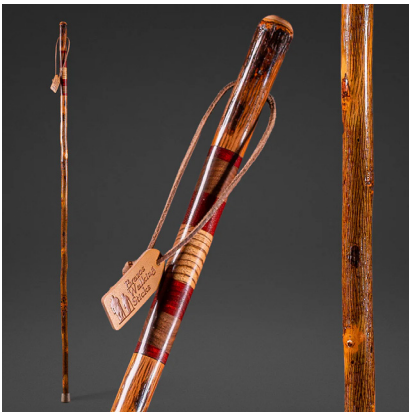


Brazos® Twisted Handcrafted Hitchhiker Walking Sticks

✦ **Handcrafted Shaft** - walking sticks are completely milled and formed from a wood blank. These sticks use traditional patterns for shape and function.

ITEM #	WOOD TYPE	COLOR	SIZE	QTY
602-3000-1106	Oak	Red	48"	1
602-3000-1108	Oak	Brown	55"	1
602-3000-1109	Oak	Red	55"	1
602-3000-1110	Oak	Tan	55"	1
602-3000-1111	Oak	Brown	58"	1
602-3000-1112	Oak	Red	58"	1
602-3000-1113	Oak	Tan	58"	1

Hickory Safari Rustic Handle - Brazos padauk, walnut & bocote safari handle, hickory walking stick with it's rugged, rustic appeal combined with exceptional strength.

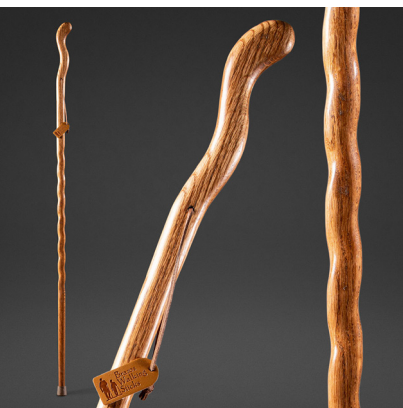


Brazos® Rustic Safari Hickory Walking Sticks

✦ **Free-Form Shaft** - Includes all the natural characteristics of the wood in your rustic hiking sticks. Free-Form walking sticks are naturally straightened and lightly sanded to keep the natural-wood rustic walking stick look.

ITEM #	WOOD TYPE	SIZE	QTY
602-3000-1202	Hickory	55"	1

Ergonomic Style Handle - This stylish and practical handle empowers you to exercise confidently as you walk briskly through your favorite trail or walking path, without sacrificing style. Best when used as a pair.



Brazos® Twisted Handcrafted Ergonomic Walking Sticks

✦ **Handcrafted Shaft** - walking sticks are completely milled and formed from a wood blank. These sticks use traditional patterns for shape and function.

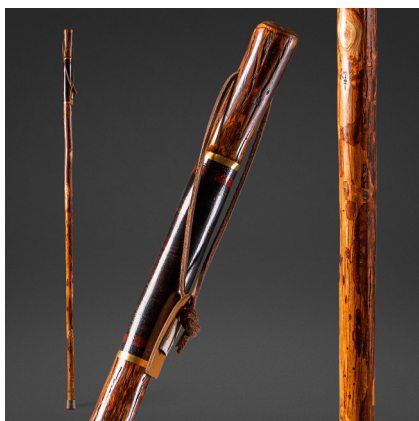
ITEM #	WOOD TYPE	COLOR	SIZE	QTY
602-3000-1087	Oak	Brown	48"	1
602-3000-1088	Oak	Red	48"	1
602-3000-1089	Oak	Tan	48"	1
602-3000-1090	Oak	Brown	55"	1
602-3000-1091	Oak	Red	55"	1
602-3000-1092	Oak	Tan	55"	1
602-3000-1093	Oak	Brown	58"	1
602-3000-1094	Oak	Red	58"	1

Brazos Walking Sticks®

Walking Sticks



Exotic Leather Safari Handle - is made by taking our venerable Hickory Walking Stick and accent it with a leather handle comprised of 35 layers of vegetable tanned leather sandwiched between rings of the exotic woods brass, padauk, and ebony imported from Africa or South America.

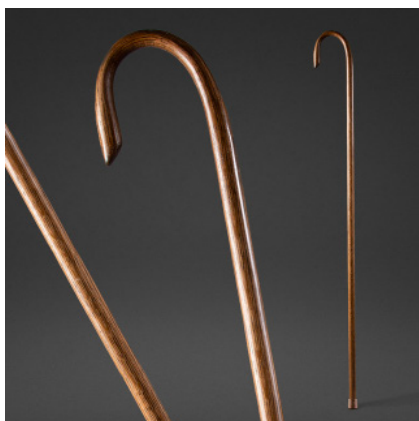


Brazos® Twisted Free-Form Exotic Leather Safari Traditional Walking Sticks

✦ **Free-Form Shaft** - Includes all the natural characteristics of the wood in your rustic hiking sticks. Free-Form walking sticks are naturally straightened and lightly sanded to keep the natural-wood rustic walking stick look.

ITEM #	WOOD TYPE	SIZE	QTY
602-3000-1170	Hickory	55"	1
602-3000-1171	Hickory	58"	1

Crook Neck Handle - is a long and sturdy stick with a hook at one end, used by a shepherd to manage and sometimes catch livestock. When traversing rough terrain, a crook is an aid to balance.



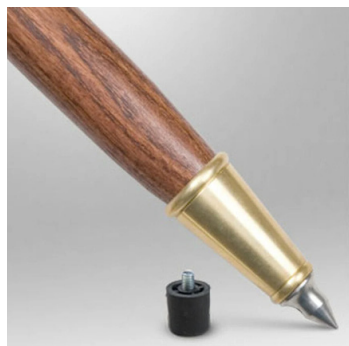
Brazos® Straight, Handcrafted Shaft, Crookneck Handle Walking Sticks

✦ **Handcrafted Shaft** - walking sticks are completely milled and formed from a wood blank. These sticks use traditional patterns for shape and function.

ITEM #	WOOD TYPE	COLOR	SIZE	QTY
602-3000-1222	Oak	Red	58"	1

Brazos Walking Sticks®

Accessories



Brazos® Metal Spike for Walking Sticks

- ✦ Top of the line spike option.
- ✦ Features a brass construction with an interchangeable rubber tip and metal spike tip.
- ✦ Provides greater versatility.

ITEM #	MATERIAL	QTY
512-3000-1013	Brass Spike Combo	1
512-3000-1038	Replacement Rubber Tip	1
512-3000-1039	Replacement Metal Tip	1



Brazos® Metal Brass Spike for Walking Sticks

- ✦ Rugged brass spike coupled with a premium quality, removable rubber ferrule.
- ✦ Spike ferrules are useful for going "off road" with your walking stick, where you may need extra "grip" on rocky terrain, uneven footing, snow, and even ice.
- ✦ The Brazos Brass Spike's pointed end is not removable.

ITEM #	DESCRIPTION	QTY
512-3000-1001	Brass Spike	1
512-3000-1049	Replacement Rubber Stopper	1



Brazos® Walking Stick or Cane Ferrule

- ✦ Premium quality rubber tip for walking sticks and walking canes.
- ✦ Wide grip offering superior stability.
- ✦ Metal washer inside for more support.

ITEM #	SIZE	DIMENSIONS	QTY
512-3000-1021	Extra Small	1/2"	1
512-3000-1022	Small	3/4"	1
512-3000-1023	Medium	7/8"	1
512-3000-1024	Large	1 1/16"	1



Brazos® Wrist Strap for Walking Stick or Cane

- ✦ A strong strap attaches easily to any size cane shaft. Helps hold the cane to the wrist allowing the hand to hold something else.
- ✦ Elastic section goes around cane and the nylon strap attaches.

ITEM #	COLOR	QTY
512-3000-1007	Black	1
512-3000-1035	Brown	1

Brazos Walking Sticks® - Accessories



Brazos® Leather Walking Stick Case

- ✦ Leather hiking stick bag is a handcrafted and an ideal solution for protecting and carrying your walking stick when not in use.
- ✦ Made of premium top grain, 8oz, oil tanned leather with a solid brass snap instead of Velcro or strings.
- ✦ Holds one standard walking stick.

ITEM #	DESCRIPTION	QTY
512-3000-1011	Single Stick Case	1
512-3000-1029	Travel Stick Case	1



Brazos® Compass

- ✦ Our standard compass is a perfect option for a basic, accurate compass. It features large letters and an easy-to-read 18mm face.
- ✦ Our liquid filled compass is our top-of-the-line compass option. It's a grade AA compass featuring precision accuracy and easy-to-read letters that glow in the dark.
- ✦ Available to add onto most walking sticks.

ITEM #	DESCRIPTION	QTY
512-3000-1005	Standard	1
512-3000-1040	Liquid Filled	1



Brazos® Thermometer

ITEM # 512-3000-1027

- ✦ This Fahrenheit Thermometer registers temperatures between -20° and 140°. It's liquid-filled and grade A quality.
- ✦ Available to add onto most walking sticks.



Brazos® Medallion

- ✦ The detailed medallion is typically drilled into the handle of the chosen walking stick or cane.
- ✦ Available to add onto most walking sticks or canes.

ITEM #	DESCRIPTION	QTY
512-3000-1058	American Flag	1
512-3000-1031	Texas State Seal	1



Brazos® Round Barnwood Display Stand

ITEM # 512-3000-1018

- ✦ The Barnwood Barrel Display Stand fits up to 30 walking sticks.

Brazos Walking Sticks®

Cutting Boards



Brazos® Dark Walnut Seasoned Wood Cutting Board

- ✦ Wood cutting board made of organic walnut is extremely durable with a deep rich brown color.
- ✦ The soft straight grains and hand sanded smooth surface won't cause excessive wear on knives or the board.

ITEM #	SIZE	QTY
512-3000-1061	Small	1
512-3000-1084	Medium	1
512-3000-1060	Large	1

Brazos® Dark Walnut Unseasoned Wood Cutting Board

- ✦ Wood cutting board made of organic walnut is extremely durable with a deep rich brown color.
- ✦ Arrives unfinished and unseasoned to allow the user to apply the final touch with the included Board Butter to bring out the natural beauty of the wood. The butter contains all food grade ingredients that will keep the board beautiful and clean.
- ✦ The soft straight grains and hand sanded smooth surface won't cause excessive wear on knives or the board.



ITEM #	SIZE	QTY
512-3000-1088	Small/Medium	2
512-3000-1087	Large	1
512-3000-1090	Board Butter	8oz

Brazos Outdoors™



Brazos Outdoors™ Trekking Poles

- ✦ The contoured moisture-wicking cork handles, with padded adjustable wrist straps, help to ensure a safe, comfortable, and secure grip with every step.
- ✦ Quick adjustable locks with size markings are incorporated on each section of the Brazos® Trekking Poles. The size markings in both IN and CM.
- ✦ Accessories included: Tungsten Carbide tips provide an optimal grip on rugged terrain such as rocks, dirt or ice. The rubber tips are great for most hard, flat or rocky surfaces, while the Mud Baskets and Snow Baskets help keep the pole from sinking into mud, snow or other soft surfaces when hiking.
- ✦ Constructed of 7075 air-craft grade aluminum, these strong yet lightweight poles adjust from 42" - 54" yet collapse down to only 25" for easy transport.

ITEM #	SIZE	QTY
604-3000-0201	White	1
604-3000-0202	Purple	1
604-3000-0203	Green	1

Brazos Outdoors™ First Aid Survival Kit, 250pc

ITEM #604-2600-0250



- ✦ The 250-piece hiking first aid kit is the perfect emergency companion for hikers, campers, bike enthusiasts and everything in between.
- ✦ This tactical first aid kit has 10 essential pieces of survival equipment including: a tactical flashlight, glow sticks, camping knife, emergency poncho, emergency mylar blanket and more.
- ✦ Includes: alcohol wipes, adhesive bandages, cotton tip applicators, shears, metal tweezers, wound dressings, gloves, sting relief pads, cotton balls, CPR mask and much more.
- ✦ Designed for the outdoors, the kit fits perfectly in cars, boats, purses, desk drawers, and back packs as it weighs under 2lbs. The dimensions are: 8.2"H x 5.5"W x 5"D.
- ✦ The first aid kit has tactical hooks and closures that can attach securely to any equipment or camping bags.

Brazos Outdoors™ Crossbody Sling Daypack

ITEM # 604-3100-0200



- ✦ Features a 6-pocket design including a removable phone compartment.
- ✦ Includes a headphone-accessible hole for convenient listening.
- ✦ Equipped with a reversible shoulder strap for adjustable comfort.
- ✦ Constructed from high-quality materials for durability.
- ✦ Designed with a breathable back pad for enhanced comfort during wear.

Foot Care - Steins®

Insoles & Heel Cushions



Steins® Foam Comfort Insoles

- ✦ Alleviate discomfort caused by flat feet, plantar fasciitis, and other conditions.
- ✦ Deep Heel Cup for Stability: The orthopedic deep heel cup helps maintain the correct foot positioning stabilizing the foot during impact & reducing strain on the heel & arch perfect for walking or running.
- ✦ Premium Shock-Absorbing Material: Constructed with high-quality foam.

ITEM #	DESCRIPTION	WOMENS SIZE	MENS SIZE	QTY
765-8700-0001	Small	7.5 - 9	7	1 pair
765-8700-0002	Medium	9.5 - 10.5	7.5 - 8.5	1 pair
765-8700-0003	Large	11 - 13	9 - 11	1 pair



Steins® Silicone Dual Density Comfort Shoe Gel Insoles

- ✦ Made from flexible silicone cushioning that absorbs the impact on the ankle, knee and hip joints as you walk.
- ✦ The padded heel surface and insole provide support and relief from plantar fasciitis while the foot insert offers extra arch support.

ITEM #	SIZE	QTY
768-1114-0000	Mens 5 - 6 / Women 5.5 - 7	1 Pair
768-1114-0001	Mens 6.5 - 7.5 / Women 7.5 - 9	1 Pair
768-1114-0002	Mens 8 - 9 / Women 9.5 - 10	1 Pair
768-1114-0003	Mens 9.5 - 10.5 / Women 10.5 - 11.5	1 Pair



Steins® Silicone Heel Cushions

- ✦ Place under rear of foot in shoe hand wash and air dry
- ✦ The silicone is clear with green pressure points and is not noticeable in a shoe

ITEM #	WOMENS SIZE	MENS SIZE	QTY
768-1115-0001	7.5 - 9	6.5 - 7	1 pair
768-1115-0002	9.5 - 10	8 - 9	1 pair

Steins® Redi-Cut Heel Adhesive Spur Pads

- ✦ These soft, shock-absorbing pads help ease the pain and discomfort caused by various foot conditions such as plantar fasciitis
- ✦ Unique shape fits your heels comfortably to protect them from further injury and inflammation due to pressure from your shoes

ITEM #	THICKNESS	QTY
765-2670-0000	1/4"	100/pk



Foot Care - Steins®

Foot & Toe Pads



Steins® Metatarsal Pads

- ✦ Advanced metatarsal pads for ball of foot, designed to provide instant relief from the pressure of high heels. Perfect for long days, these pads ensure your feet feel supported.
- ✦ Engineered to distribute weight evenly, reducing stress on your foot.
- ✦ Equipped with a reliable adhesive to stay securely in place throughout the day. Whether you're walking, dancing, or just moving around, there's no slipping or sliding.
- ✦ Constructed from high-quality, medical-grade silicone gel covered with soft material are not only durable but also long-lasting.

ITEM #	DESCRIPTION	QTY
768-5000-0104	Brown	2 pair
768-5000-0204	Black	2 pair
768-5000-0304	Clear	2 pair

Steins® Pre-Cut Adhesive Blister Pads

- ✦ Transfers pressure from bunion, callus or blister to pad
- ✦ Strong adhesive holds pad securely in place
- ✦ Wear comfortably with socks and shoes
- ✦ Felt and latex foam options available

ITEM #	DESCRIPTION	MATERIAL	THICKNESS	QTY
765-2355-0000	U-7 IPK Padding	Felt	1/8"	100/pk
765-2356-0000	U-8 IPK Padding	Felt	1/8"	100/pk
765-3331-0000	U-7 IPK Padding	Foam	1/8"	100/pk
765-2357-0000	U-9 IPK Padding	Felt	1/8"	100/pk

Steins® Pre-Cut Adhesive Meta & Arch Pads

- ✦ Provides pain relief, comfort and support for the ball of the foot
- ✦ Reduces friction and pressure
- ✦ Adhesive backing secure pad in place
- ✦ Skived options feature a comfort edge that provides additional relief
- ✦ Used to effectively treat metatarsalgia

ITEM #	DESCRIPTION	MATERIAL	THICKNESS	QTY
765-2140-0006	#20-N Meta Pad	Felt	1/16"	6/pk
765-3450-0006	#20-N Meta Pad	Foam	1/4"	6/pk
765-6521-0000	#30-N Meta Pad	Felt	1/4" Skived	100/pk
765-6521-0006	#30-N Meta Pad	Felt	1/4" Skived	6/pk
765-6519-0006	#30-N Meta Pad	Felt	1/8" Skived	6/pk
765-6529-0000	#40 Arch Pad	Felt	1/8" Skived	100/pk
765-2240-0000	#40 Arch Pad	Felt	1/8"	100/pk

Foot Care - Steins®

Foot & Toe Pads



Steins® Adhesive Pre-Cut Kidney Moleskin Pads

- ✦ Relieves pain in tender spots
- ✦ Reduces friction between foot and shoe
- ✦ Protective flexible material. Cuts to any shape
- ✦ Strong adhesive holds pad securely in place
- ✦ Conforms to any area of the foot
- ✦ Used to effectively treat bunions, calluses and plantar fasciitis

ITEM #	SIZE	QTY
765-5041-0000	3"	100/pk
765-5041-0008	3"	8/pk
765-5042-0000	3.5"	100/pk
765-5043-0000	4"	100/pk



Steins® Adhesive Pre-Cut Moleskin Pads

- ✦ Relieves pain in tender spots
- ✦ Reduces friction between foot and shoe
- ✦ Protective flexible material. Cuts to any shape
- ✦ Strong adhesive holds pad securely in place
- ✦ Conforms to any area of the foot
- ✦ Used to effectively treat bunions, calluses and plantar fasciitis

ITEM #	SIZE	QTY
765-5021-0000	#21	100/pk
765-5044-0000	Small Oval	100/pk
765-5045-0000	Large Oval	100/pk
765-5054-0000	2" x 3"	100/pk



Steins® Removable Felt Bunion Pads

- ✦ Eases bunion pressure from shoe
- ✦ High-quality felt offers superior protection

ITEM #	THICKNESS	QTY
765-5128-0000	3/16"	100/pk

Foot Care - Steins®

Foot & Toe Pads



Steins® Gel Bunion Cushion

ITEM # 765-1104-0001

- ✦ Flexible pad conforms to the shape of your foot.
- ✦ Slim and lightweight design fits into most shoes.
- ✦ Provides superior relief from pressure and friction.



Steins® BP-9 Adhesive Foam Bunion Pads

- ✦ Bunion pads reduce pain and friction.
- ✦ High-quality foam offers cushioning protection

ITEM #	THICKNESS	QTY
765-3340-0000	1/8"	100/pk



Steins® Adhesive Felt Corn Pads

- ✦ Easy peel off – HD pad.
- ✦ Fine quality wool felt with super adhesive backing
- ✦ Easy to stretch and form

ITEM #	THICKNESS	COLOR	QTY
765-1021-0000	1/16	Flesh	500/pk
765-1030-0000	1/16	Flesh	500/pk



Steins® Foam Corn Pads

ITEM # 765-1104-0001

- ✦ Reduces pain associated with corns, calluses, and hammer toes.
- ✦ Transfers pressure from corn to pad.
- ✦ Made of durable foam for added cushioning.

Adhesive backing secures pad in place.

Wear comfortably with socks and shoes.

ITEM #	MATERIAL	THICKNESS	QTY
765-3022-0009	Foam	1/8"	9/pk

Foot Care - Steins®

Toe Spacers & Protectors



Steins® Gel Toe Spacer

ITEM # 765-3075-0004

- ✦ Easy to put on and comfortable to wear, our toe spacers provide continuous relief from bunions, hallux valgus, corns and overlapping toes.
- ✦ Soft medical grad gel gently helps maintain proper toe alignment while preventing rubbing and relieving pressure.
- ✦ Can be worn day and night so you can enjoy your hobbies again comfortably while also getting a more comfortable sleep.
- ✦ Designed to be durable enough for several reuses, saving you money. Simply wash with warm water and a mild detergent and let air dry.



Steins® Gel Toe Spacer

ITEM # 765-3075-0004

- ✦ Flexible spacer gently separates toes to reduce friction and rubbing.
- ✦ Helps correct crooked or overlapping toes.
- ✦ Designed to stay in place with universal design that can be worn on either foot.
- ✦ 4 pack



Steins® Toe Spacers/Separators

- ✦ Help align overlapping toes reducing pressure and friction and minimizing the pain of calluses bunions, corns and more.
- ✦ Easy to hand wash and reuse

ITEM #	MATERIAL	THICKNESS	QTY
768-1100-0000	Gel	1/8"	15/pk
765-5176-0000	Foam	1/8"	100/pk



Steins® Gel Cushion Toe Protector

- ✦ Fully lined gel tube soothes lesions caused by pressure or rubbing.
- ✦ Elastic washable material ensures proper fit.
- ✦ Can be worn to protect fingers as well.

ITEM #	THICKNESS	QTY
765-2075-0035	Small	1
765-2075-0036	Large	1
765-2075-0037	X-Large	

Foot Care - Steins®

Toe Cushions & Straps



Steins® Hammer Toe Crest Cushion and Buttress Pad

- + Hammer toe crest pads feature an elastic loop to support curled toes, ease pressure on the tips of toes, and eliminate forefoot pain and stress on metatarsals
- + Made of high quality felt with a foam center to cushion and correct hammer toes, mallet toes and claw toes. Machine washable.

ITEM #	DESCRIPTION	SIZE	QTY
765-5138-0000	Right	Small	3/pk
765-5139-0000	Left	Small	3/pk
765-5140-0000	Right	Medium	3/pk
765-5141-0000	Left	Medium	3/pk
765-5142-0000	Right	Large	3/pk
765-5143-0000	Left	Large	3/pk



Steins® Toe Splint Regulator & Cushion

- + Reduces pain and friction associated with crooked, overlapping, claw, and hammer toes.
- + TOE SPLINT features a double loop that gently encourages proper toe alignment while a soft cushion comforts the ball of the foot.
- + Can be worn with most shoes. Machine washable.

ITEM #	DESCRIPTION	QTY
765-5116-0000	Right	1
765-5117-0000	Left	1



Steins® Adhesive Moleskin Turf Toe Straps

- + Extra tensile strength
- + Ideal for turf toe and hyper-extended toe
- + Easy to remove paper backing
- + Soft, heavy-duty nap moleskin

ITEM #	QTY
765-5073-0000	100/pk





1931 Norman Drive
Waukegan, IL 60085

HealthSmart® has been a trusted partner for providing a broad range of wellness and healthy living products for over 65 years. Our recognized MABIS®, DMI®, switch sticks®, Brazos Walking Sticks®, heelbo®, stein's, habitat® and Nourish Beauté® branded products are high quality, yet affordable solutions for both the young and young-at-heart.

These leading product solutions encompass solutions for Bath Safety, Breathing Wellness, Staying On-the-Go, Vital Signs Monitoring, Rehab Therapy, and Daily Living Essentials.

healthsmart®

DMI®
A HEALTHSMART® BRAND

MABIS®
A HEALTHSMART® BRAND

switch sticks®
A HEALTHSMART® BRAND



stein's®
A HEALTHSMART® BRAND

heelbo®
A HEALTHSMART® BRAND

habitat®
A HEALTHSMART® BRAND

NOURISH
BEAUTÉ

www.livehealthsmart.com