

Dual Scale • Waterproof • Rectal Digital Thermometer

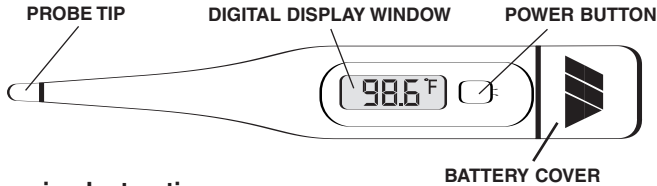
Thank you for purchasing a MABIS Digital Thermometer. Please read the following instructions to achieve the most accurate temperatures and safe operation. With proper care and use, your thermometer will provide you with years of reliable readings.

NOTE: F - indicates Fahrenheit mode
C - indicates Celsius mode

What is a "Normal" Temperature?

Although the generally accepted "normal" temperature reading is 98.6°F/37.0°C, temperature readings can vary from 97.0°F/36.1°C to 99.0°F/37.2°C and still may be considered "normal". Variations in temperature can be attributed to activities such as exercise, smoking, eating and drinking. Even time of day may influence your temperature. For example, your temperature is lower in the morning than in the afternoon. Other variations may be due to the location of the temperature reading. While the oral temperature follows the guidelines previously described, a rectal temperature is generally 1.0°F/0.5°C higher. Conversely, an axillary (under the arm) temperature will be 1.0°F/0.5°C lower.

Features of your MABIS Digital Thermometer




Cleaning Instructions


Before and after each use, clean the thermometer with a soft cloth and iso-propyl alcohol diluted with water, or wash with COLD soapy water. An intact unit can be submersed in water or alcohol. However, do not soak for an extended period of time.


1. This unit must never be sterilized by boiling, gas or steam autoclaves.
2. The use of any other solution or cleaning method beyond the above mentioned may result in reliability problems with the thermometer and void your warranty.

How to Take Your Temperature

1. Clean and disinfect the thermometer according to the instructions provided.
2. Apply a disposable probe cover to the clean, dry thermometer.
3. Press the POWER button (the unit will beep) to activate the thermometer.

 This is the LCD display test, which insures all of the parts of the display are functioning properly. Within approximately 3 seconds, the last reading will appear with the 'M' symbol in the lower right corner of the display, indicating memory.

 This display shows the last temperature reading. When 'M' disappears and 'L°F' or 'L°C' displays, the POWER button can be pressed to change between Fahrenheit (°F) and Celsius (°C) mode. Select the preferred measuring mode.

 Once the designated mode symbol begins to flash, the thermometer is ready to take a reading.

Ten beeps will sound when the measurement is complete. Press the POWER button to turn the unit off. The unit will automatically shut off after approximately ten minutes.

Taking a Rectal Temperature

NOTE: Rectal temperatures are an appropriate and reliable method for infants and small children. Otherwise, this method should only be used when it is impossible or impractical to take an oral or axillary temperature.

1. Apply the pre-lubricated disposable probe cover. Apply a water-soluble lubricant if using a probe cover that is not pre-lubricated.
2. Gently insert the probe a MAXIMUM of 1/2" into the rectum.
3. When the peak temperature has been reached, the °F or °C will stop flashing and the thermometer will sound ten quick beeps.
4. To turn the unit off, press the POWER button. The unit will automatically power down after approximately ten minutes.

NOTE: Rectal temperatures are generally 1.0°F/ 0.5°C higher than oral readings. Approximate measuring time: 1 minute.

General Care

1. The thermometer should only be used under the supervision of an adult.
2. Do not walk, run or talk during temperature taking.
3. Clean the thermometer before and after each use.
4. Store the unit in the protective case when not in use.
5. Do not bite the probe.
6. Do not store the unit where it will be exposed to direct sunlight, dust or humidity. Avoid extreme temperatures.
7. Dropping or subjecting your thermometer to strong shocks should be avoided.
8. Do not attempt to disassemble the unit, except to replace the battery.
9. If ERR displays and measurement not attainable, the unit must be replaced.

NOTE: Performance of the device may be degraded if: operated outside of stated temperature and humidity range; stored outside of stated temperature and humidity range; thermometer undergoes mechanical shock (drop); patient-temperature is below ambient temperature.

Specifications

DISPLAY:	Liquid Crystal Display
DISPLAY RESOLUTION:	4 Digits (1/10 th of a degree increments)
MEASUREMENT RANGE:	89.6°F to 111.1°F/32.0°C to 43.9°C
ACCURACY:	±0.2°F between 93.2°F and 107.6°F / ±0.1°C between 34.0°C and 42.0°C at an ambient temperature of 64.0°F to 82.0°F (18.0°C to 28.0°C)
BATTERY:	SR41/LR41 silver oxide
BATTERY LIFE:	Approximately 3,000 temperatures
AUTOMATIC SHUT-OFF:	After approximately 10 minutes
OPERATING TEMPERATURE:	89.6°F to 111.1°F/32.0°C to 43.9°C
STORAGE TEMPERATURE:	14.0°F to 140.0°F / -10.0°C to 60.0°C
DIMENSIONS:	4-7/8" x 3/4" x 3/8" (12.4cm x 1.9cm x 1.0cm)
WEIGHT:	0.4 Ounce

Specifications are subject to change without notice.

Using Disposable Probe Covers

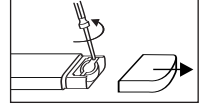
It is recommended to use disposable probe covers to prevent cross contamination. Additional probe covers can be purchased from your MABIS Dealer or with the order form provided.

Changing the Battery

The battery in your digital thermometer needs to be replaced when "▽" appears in the lower right of the display. Replace the battery with a 1.55V, LR41 alkaline or SR41 silver oxide type or equivalent.

To replace the battery,

1. Slide the battery cap away from the unit.
2. Remove the battery holder screw using a small Phillips screwdriver.
3. Remove the battery holder.
4. Using a non-metal pointed tool remove the battery and insert the new battery with the positive (+) side facing up.
5. Replace the battery holder and screw.
6. Carefully slide the battery cap back into place.



NOTE: Please properly dispose the battery away from small children and heat.

LIMITED ONE YEAR WARRANTY

This MABIS Digital Thermometer is guaranteed to be free of manufacturing defects for a period of one year from the date of purchase under normal use. This warranty applies to the original registered purchaser only. MABIS Healthcare shall incur no liability under this warranty for any damage from any cause other than inherent manufacturing defects. ALL IMPLIED WARRANTIES, INCLUDING MERCHANTABILITY AND FITNESS ARE LIMITED TO THE DURATION OF THIS WARRANTY. THIS WARRANTY DOES NOT INCLUDE ANY LIABILITY FOR INCIDENTAL OR CONSEQUENTIAL DAMAGES. Some states do not allow limitation on how long an implied warranty lasts or do not allow the exclusion or limitation of incidental or consequential damages, so the above limitations or exclusions may not apply to you. This warranty gives you specific legal rights and you may also have other rights which vary from state to state.

CUT OUT AND MAIL TO: **MABIS HEALTHCARE INC.**
1931 NORMAN DRIVE
WAUKEGAN, IL 60085

THERMOMETER WARRANTY REGISTRATION (MUST BE COMPLETED WITHIN 10 DAYS OF PURCHASE)

NAME: _____

ADDRESS: _____

CITY: _____ STATE: _____ ZIP: _____

PURCHASED FROM: _____

CITY: _____ STATE: _____ ZIP: _____

DATE PURCHASED: _____

USER INFORMATION (OPTIONAL)

MALE FEMALE AGE: _____

AGE OF YOUNGEST FAMILY MEMBER

UNDER 6 MONTHS 6 MONTHS - 1 YEAR
 1 - 3 YEARS 3 - 5 YEARS OLDER

#MAB-1681-BMWF/CL-R 05/04
©2004 MABIS Healthcare Inc.

PROBE COVER ORDER FORM

CUT OUT AND MAIL TO:

MABIS HEALTHCARE INC.
1931 NORMAN DRIVE
WAUKEGAN, IL 60085

Please send _____ packages of disposable probe covers #15-616-000 (100 pre-lubricated probes per package). Enclosed is \$5.00 per package plus \$3.00 for shipping and handling for each order.

PAYMENT METHOD (do not send cash): Check Money Order

Please ship to:

NAME: _____

ADDRESS: _____

CITY: _____ STATE: _____ ZIP: _____

PHONE: () _____

NOTE: This order form is for shipments within the United States and Canada.

#MAB-1681-BMWF/CL-R 05/04
©2004 MABIS Healthcare Inc.